

Mad Mosaics

Part 2b

Mosaic Tile House Venice

<https://www.youtube.com/watch?v=y1qz-A3Hz10>

[https://www.cheripann.com/The Mosaic Tile House.html](https://www.cheripann.com/The_Mosaic_Tile_House.html)















Marie-Laure Bourbon

The **mosaic designs** of Marie-Laure float between metaphor and actual natural phenomena. Her sparkling tesserae decodes anything from frozen rivers to unseen galaxies.

<https://www.youtube.com/watch?v=wJdASE34snU>

<https://vimeo.com/204921234>





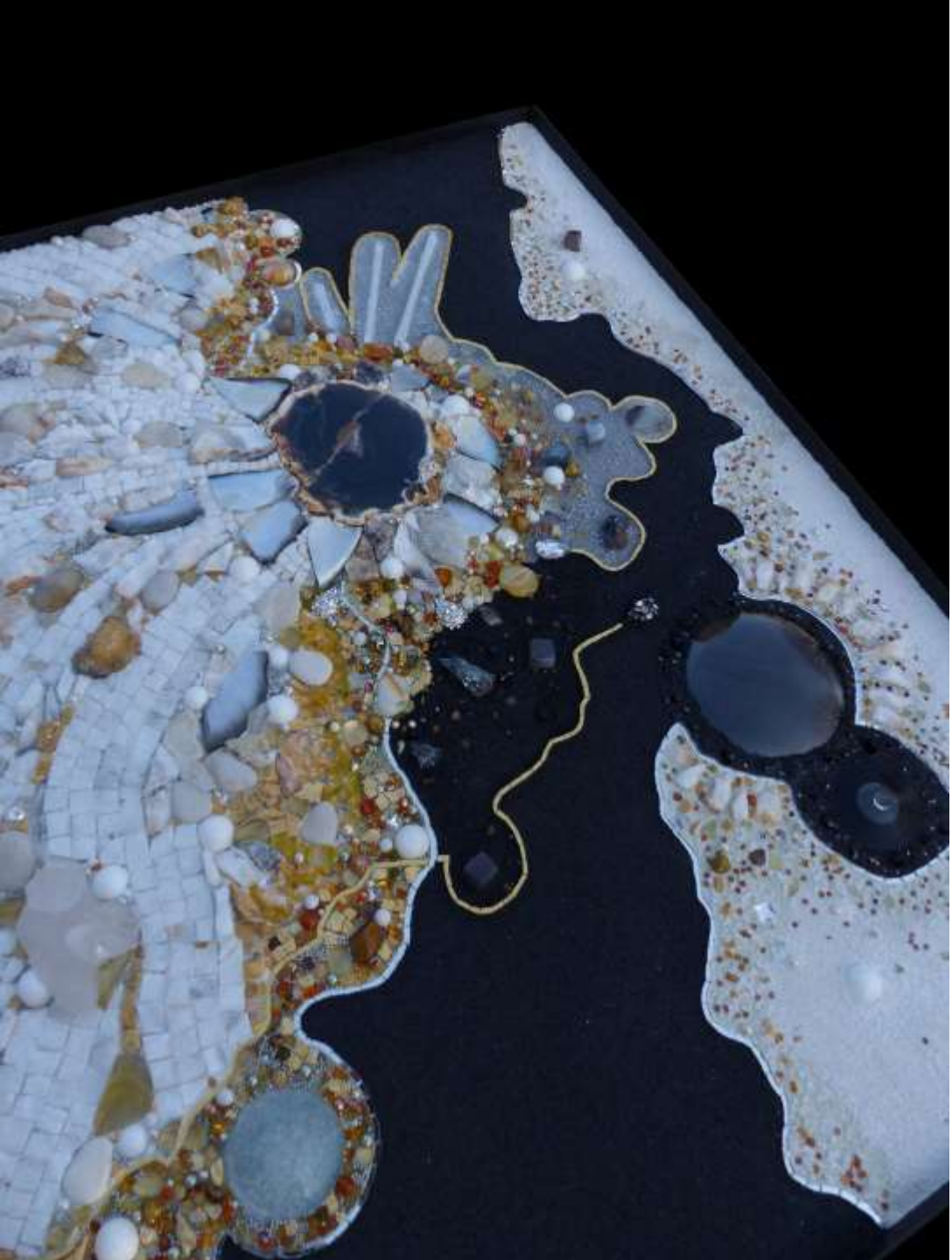












Beatrice Serre

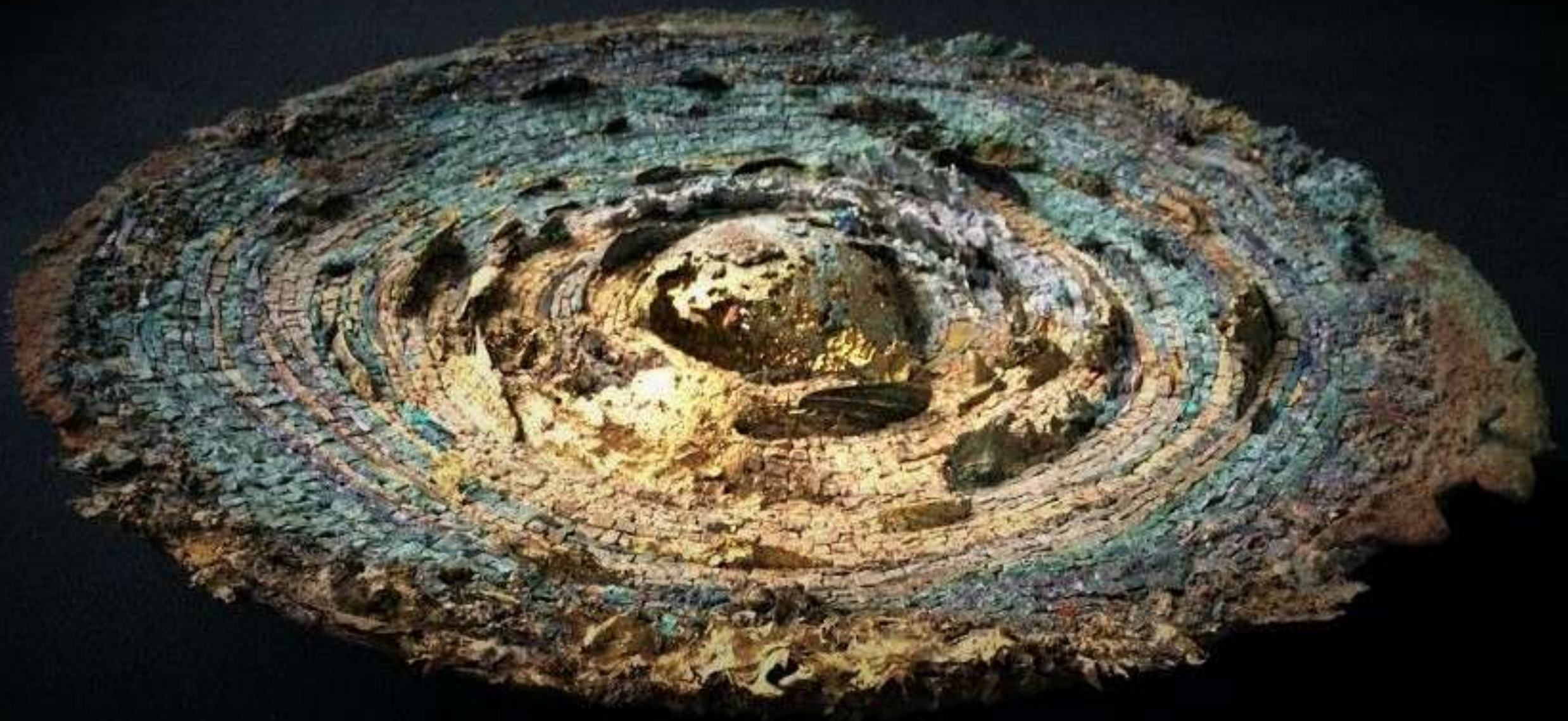
In her futuristic **tile mosaic artworks**, Beatrice Serre rediscovers past. In her Big Bang series, she “restored” the big moment of our universe.

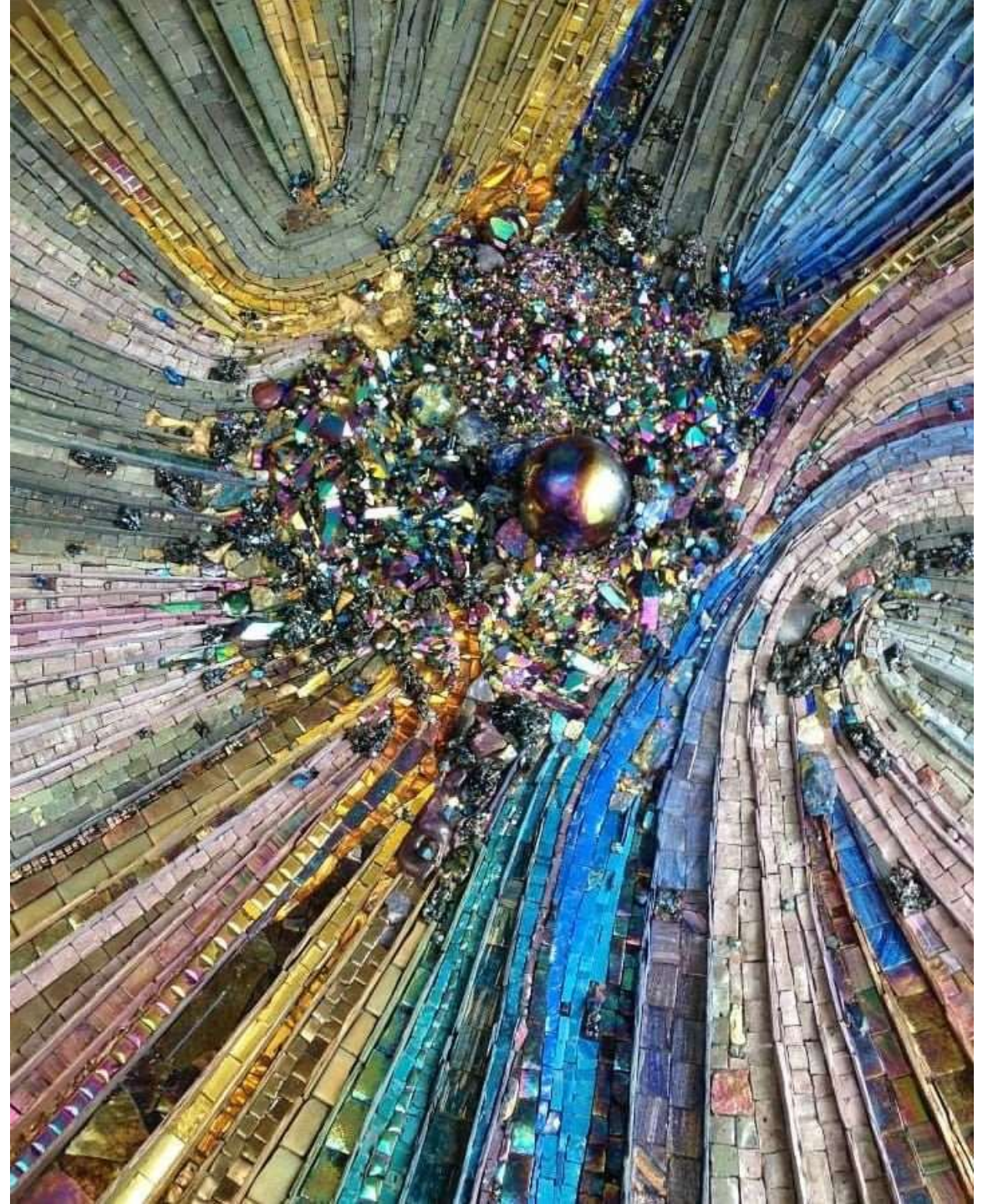
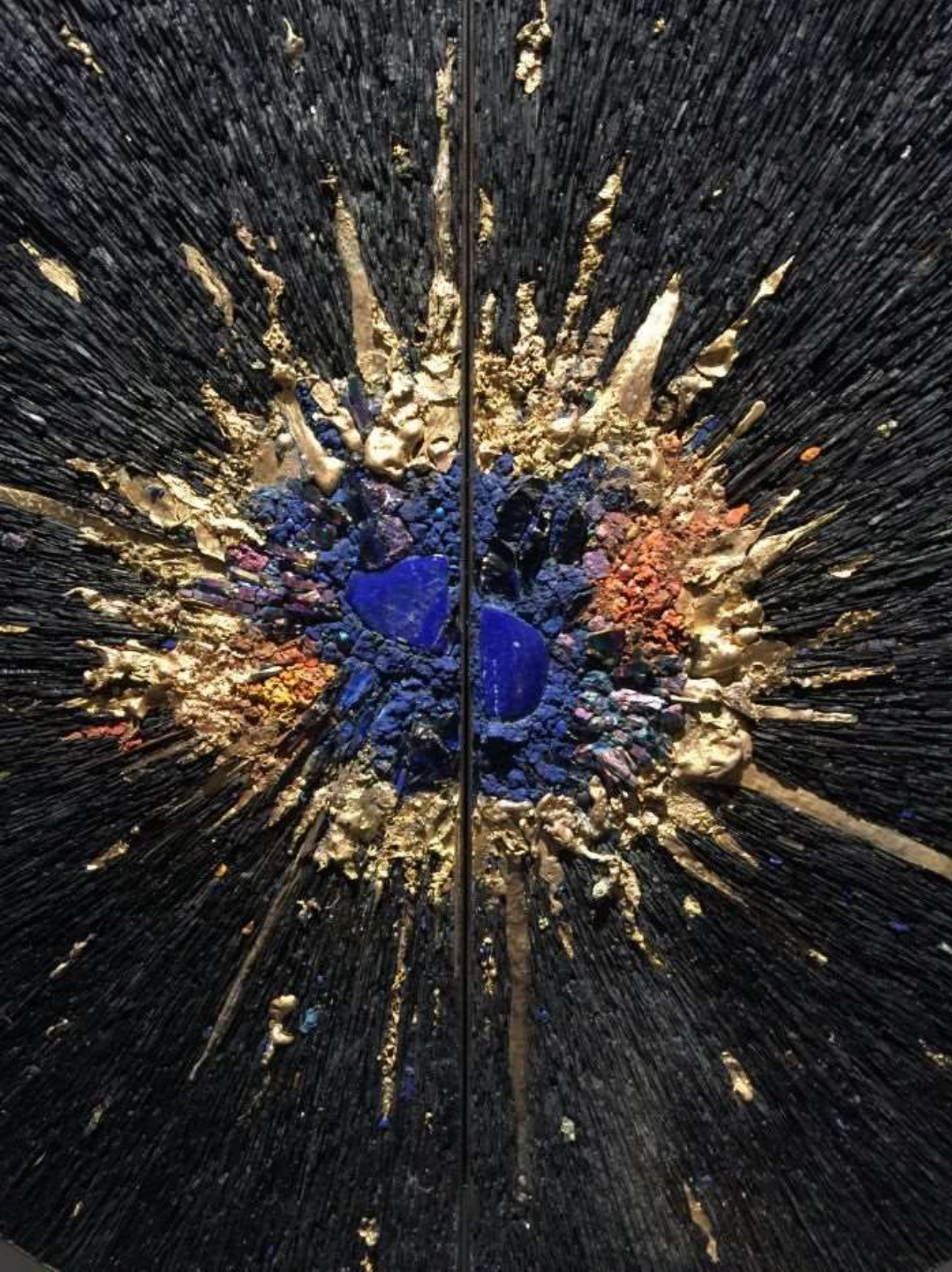
<https://21stgallery.com/artists/beatrice-serre/>

<https://www.mosaicslab.com/blog/10-contemporary-mosaic-artists-to-turn-your-mosaic-mindset-upside-down/>









Julie Sperling

Julie Sperling

<http://sperlingmosaics.com/about/>

<http://sperlingmosaics.com/teaching-mentoring/> (check out this exercise)

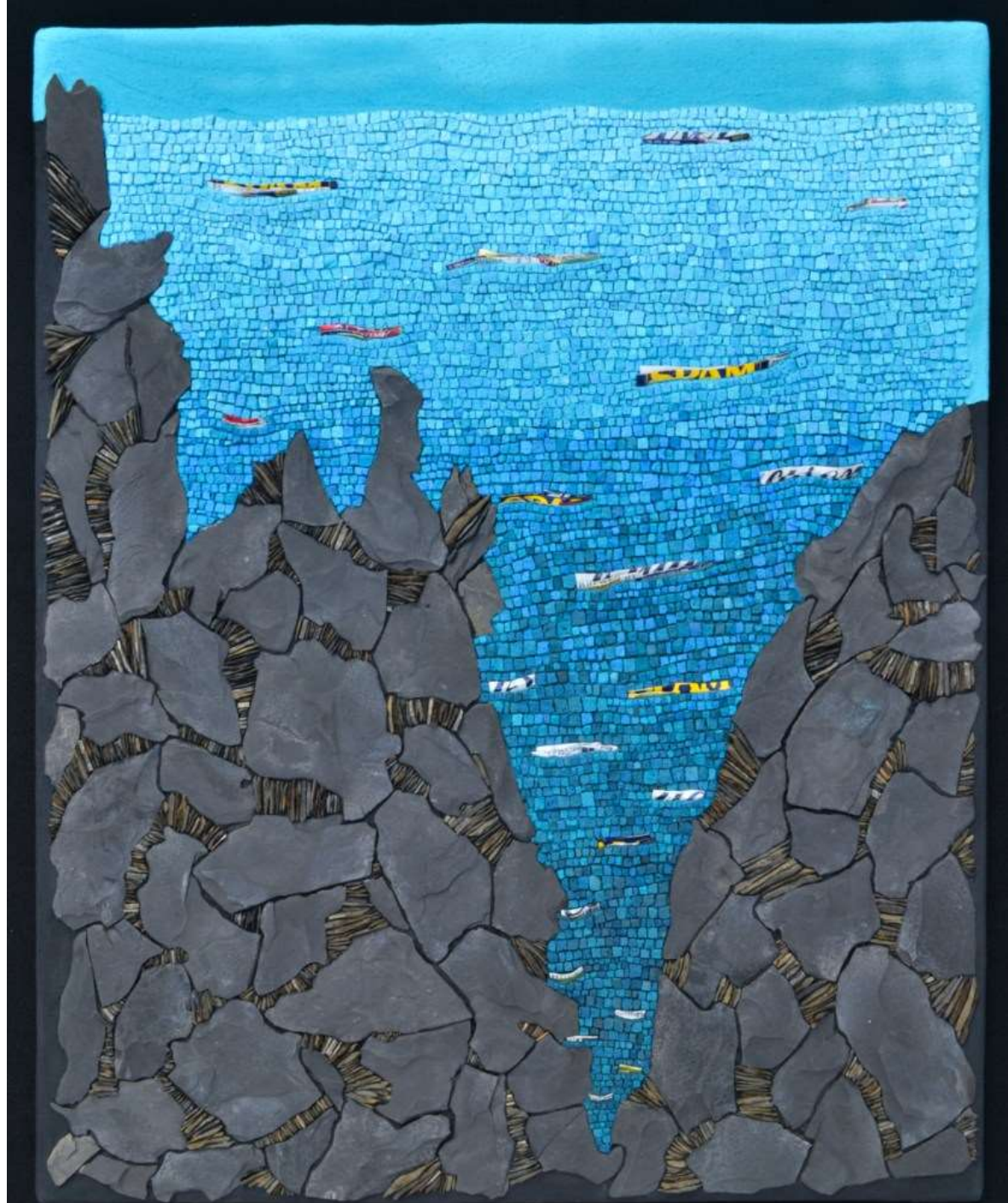
Evergreen Brick Works will play host to a collection of mosaics that explore various climate change trends and concepts, from rising temperatures to ocean acidification to the difference between weather and climate. An artist talk, "Climate in pieces: A mosaicist's perspective on climate change," will give a behind-the-scenes look into Julie Sperling's artistic process, from foraging local stone to transforming these raw materials into socially engaged art.

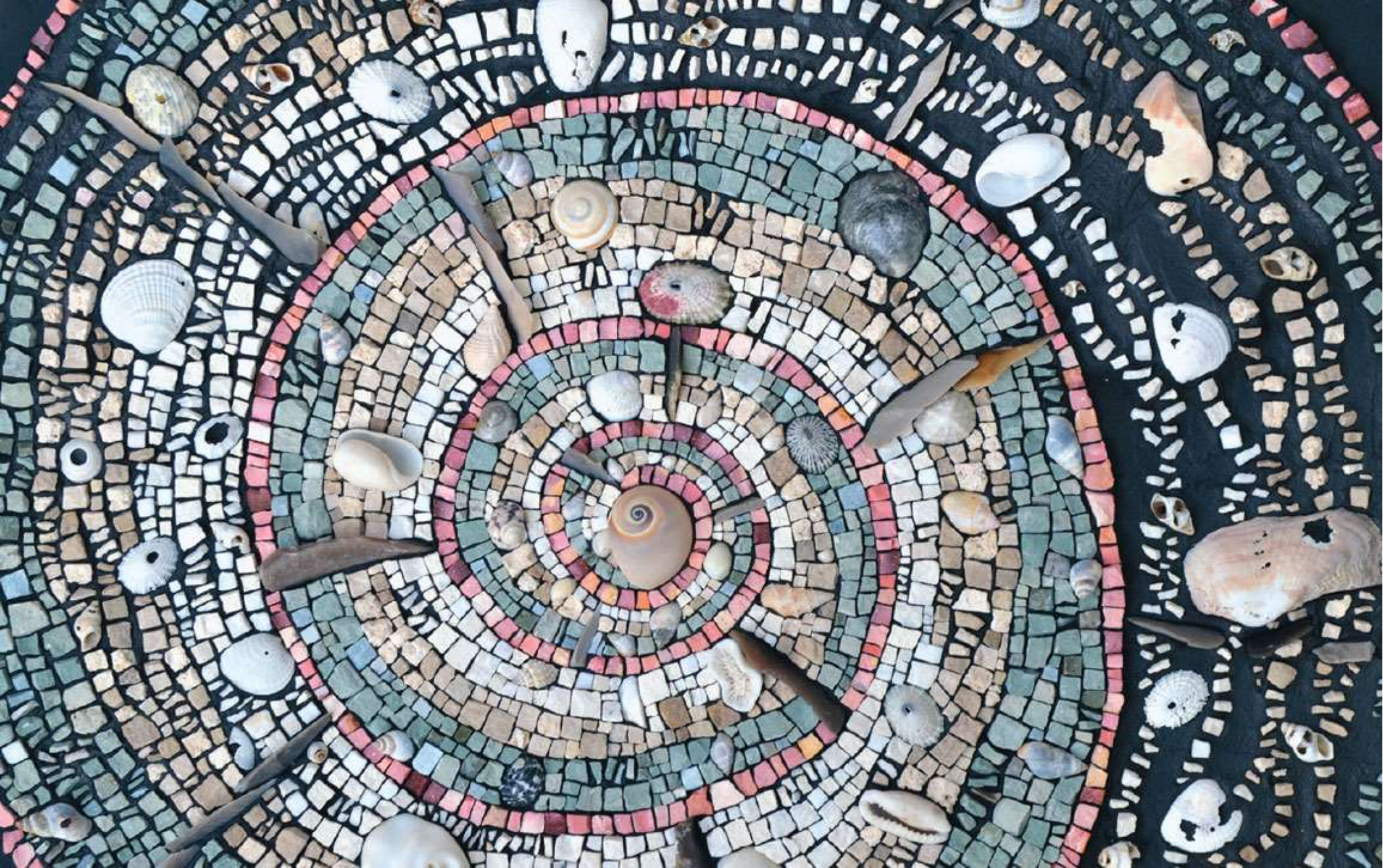




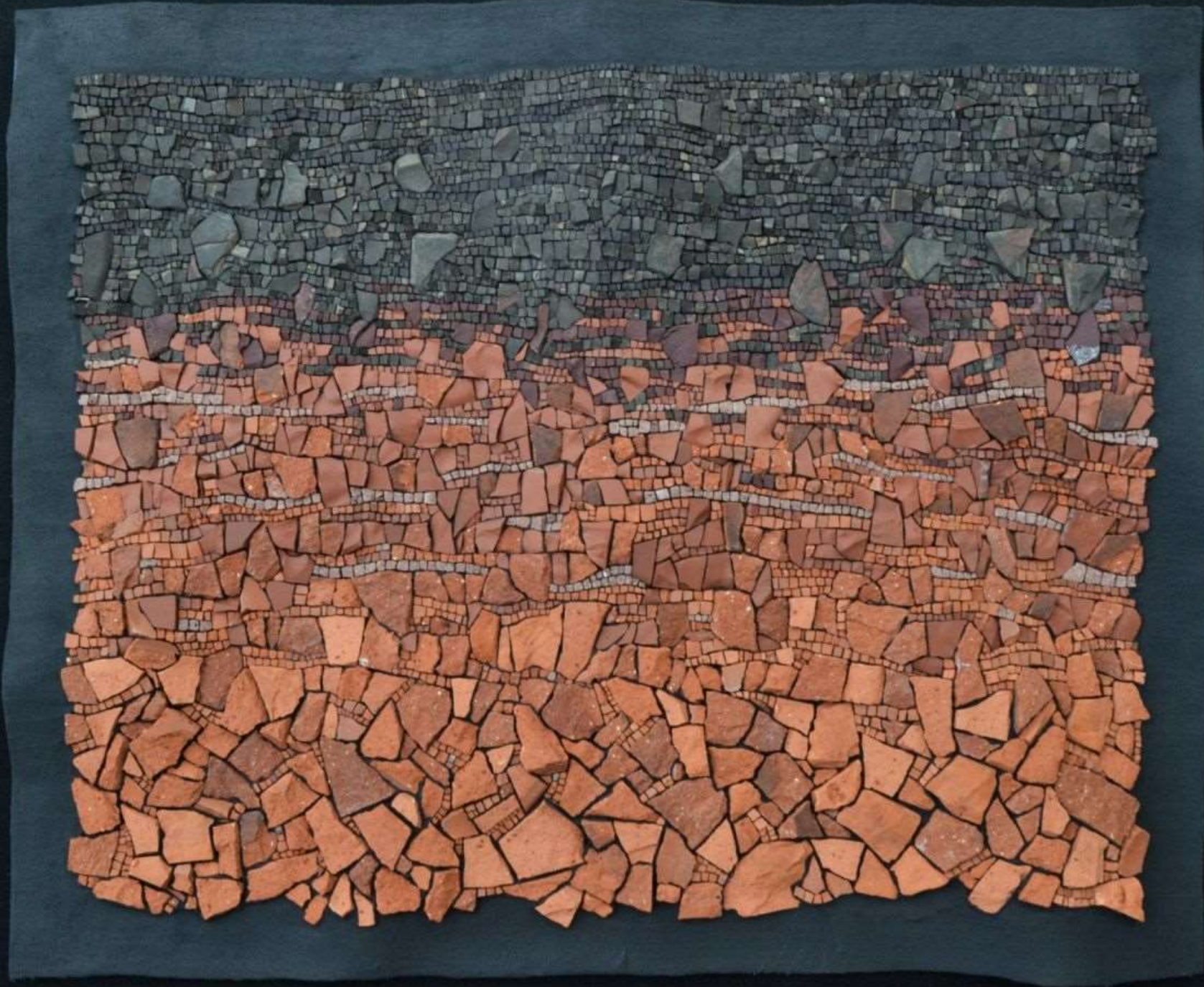
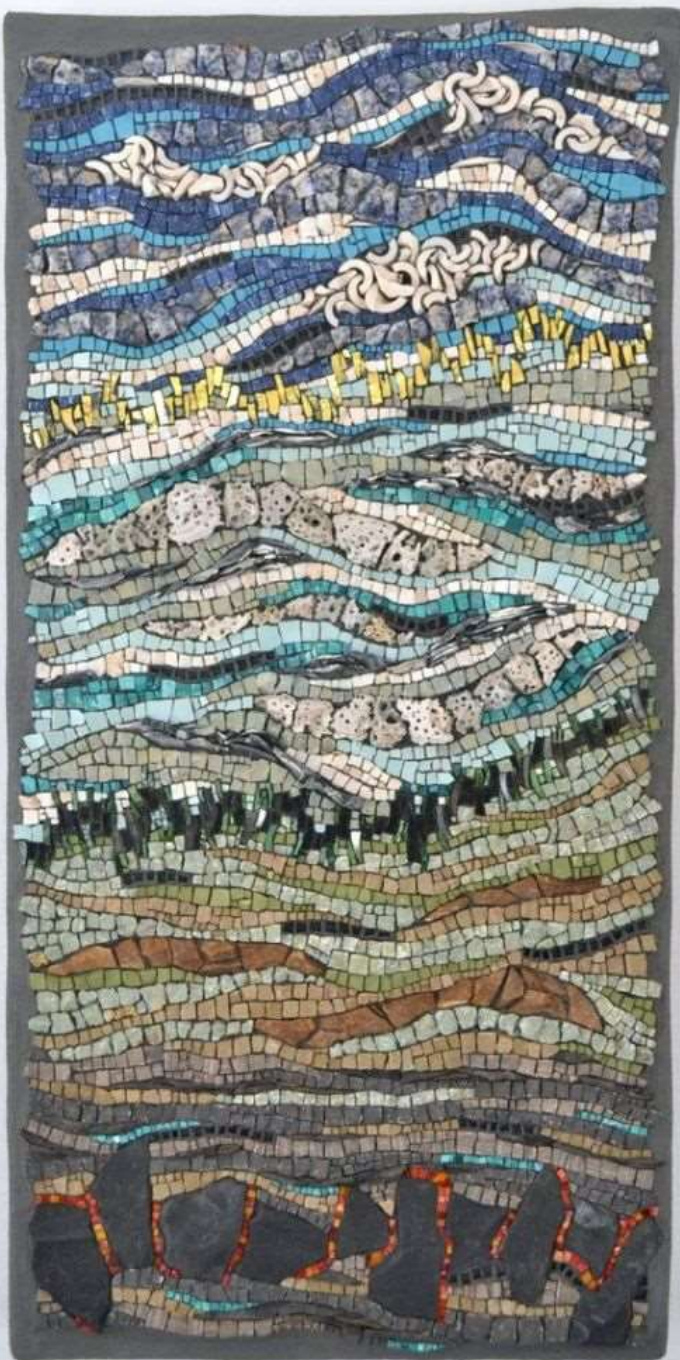


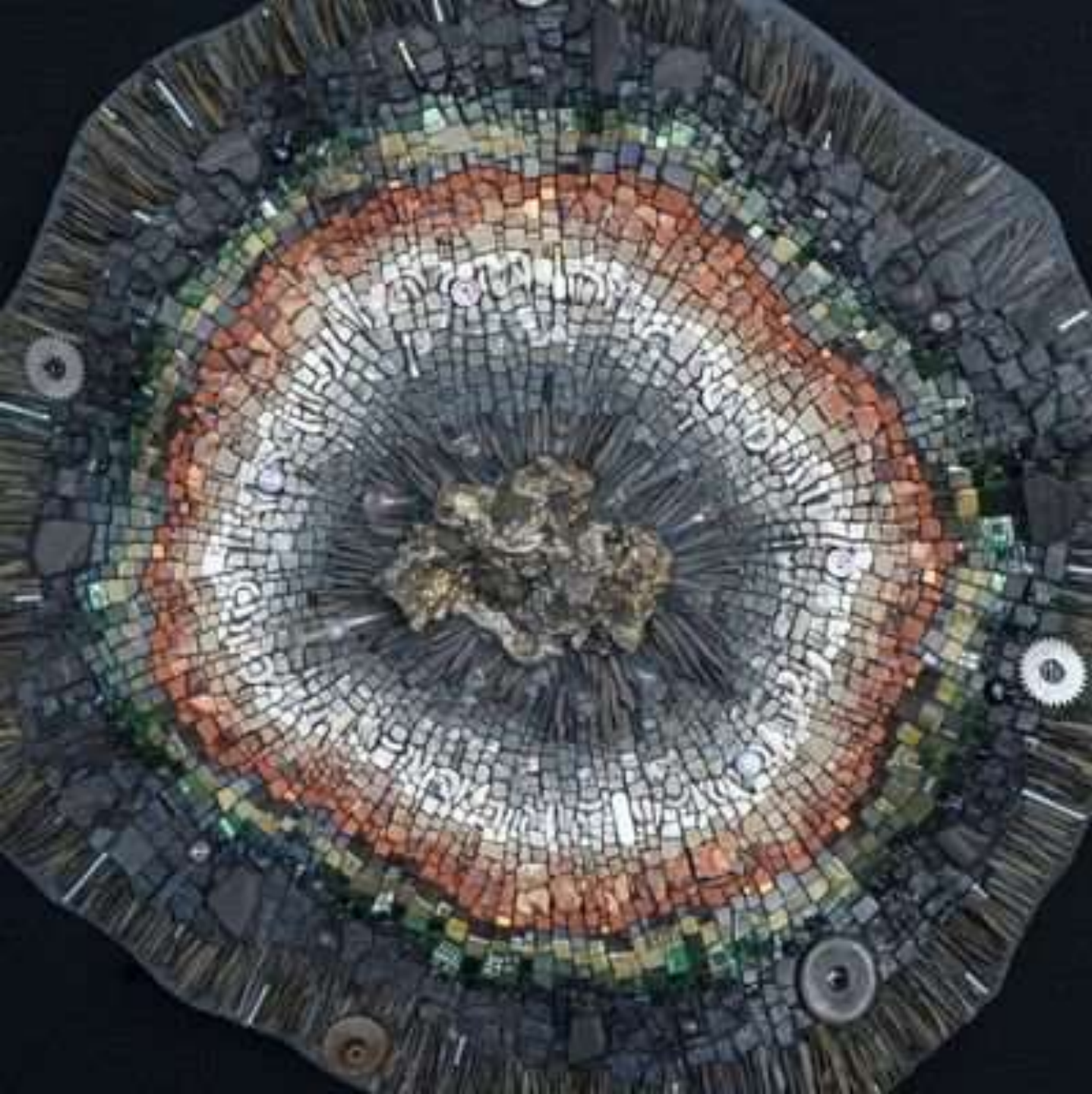












Julie Richey

Julie Richey

<http://www.juliericheymosaics.com/>

<http://www.juliericheymosaics.com/architectural-public/uzfp27g66d6rh4fnt4klx1jakg08ck>

<https://www.facebook.com/mosaicsandtours/>









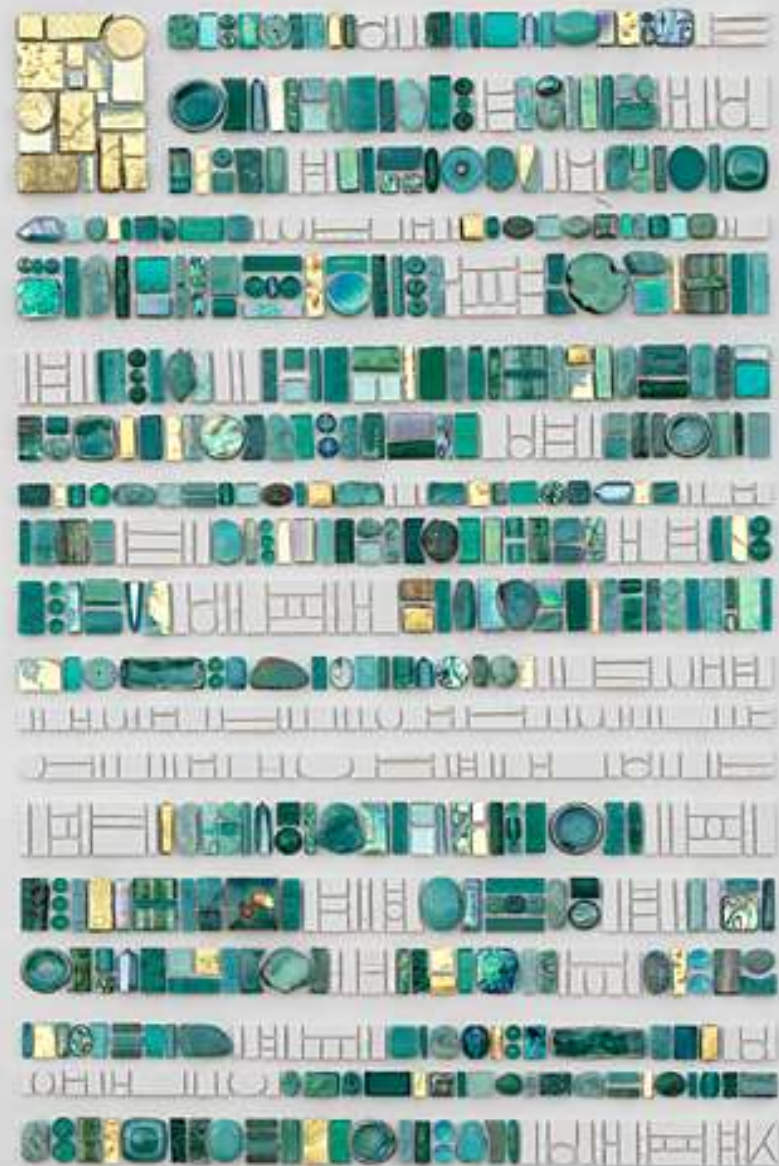
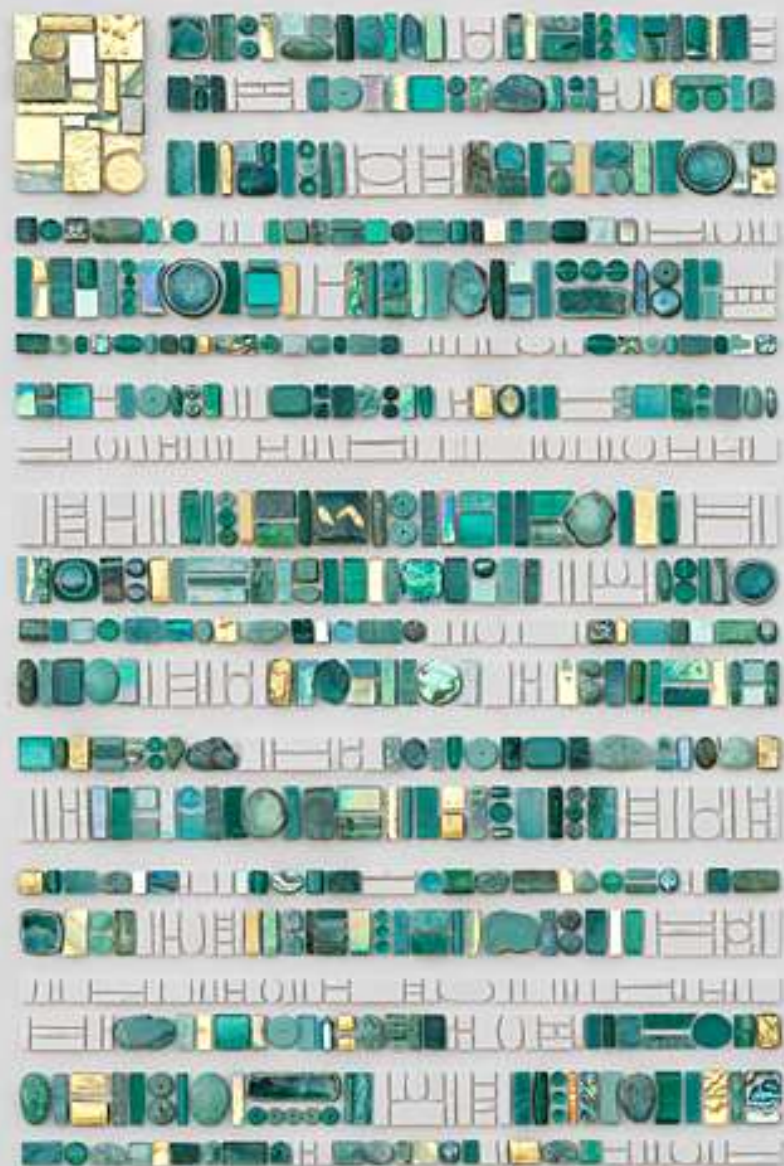


Sonia King

Sonia King is a mosaic artist, author and educator with studios in Dallas, Texas and San Francisco, California. She creates one-of-a-kind, fine art mosaics for gallery, architectural and residential settings.

<http://mosaicworks.com/gallery/fineart/>

<http://mosaicworks.com/media/videos/>





Copyright © Sonia King 2011



© Sonia King 2011







© Sonia King 2005



© Sonia King 2009

Emma Biggs

Emma Biggs (born 1956) is a London-based [mosaic](#) artist and author of a number of standard textbooks on contemporary mosaic practice. Having recently completed a large public art project — "Made in England" — based on the visual culture and ideology of the pottery industry in [Stoke-on-Trent](#) (in the English midlands), her work has become increasingly concerned with the ceramic industry and its social history. As a fine artist Emma Biggs makes abstract paintings with her husband, [Matthew Collings](#). The processes, formats and titles of the paintings also relate to her interest in material culture. She has written *Mosaic Techniques* (Cassell, 2003) and several other books co-authored with Tessa Hunkin, who joined her after she founded the London-based Mosaic Workshop in 1988. Mosaic Workshop have been responsible for a number of high-profile commissions including work for some of the chapels in London's Westminster Cathedral. She is a regular tutor of short courses in mosaic art at West Dean College, the study centre of the Edward James Foundation. She also lectures at [City and Guilds of London Art School](#).

<http://www.emmabiggsmosaic.net/>











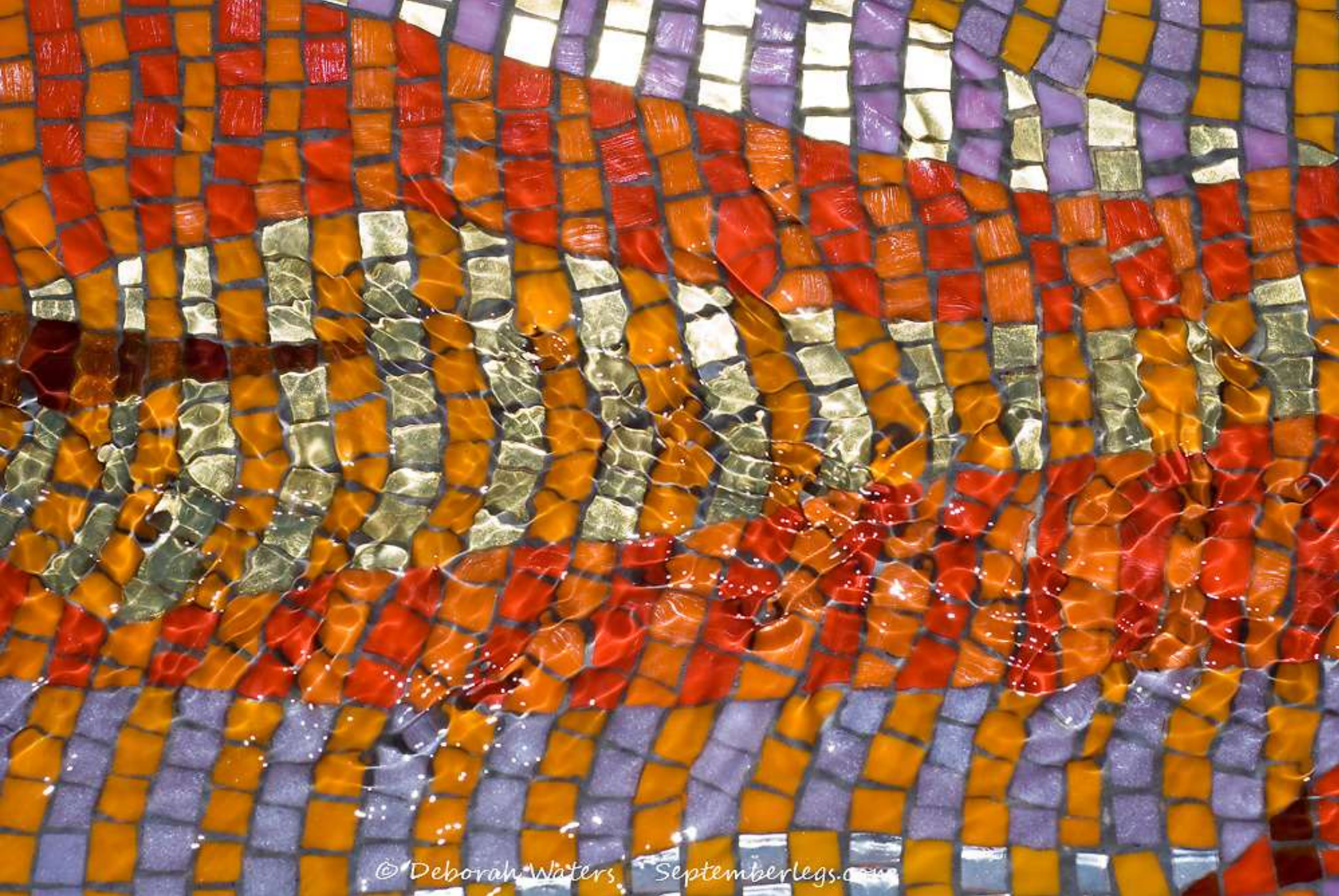












Laurel True

Laurel True is American artist, architectural artist, muralist and mosaic artist. True, founder of one of the first formal mosaic institutes in the United States, Institute of Mosaic Art, was born in Ann Arbor, Michigan,

- <https://www.truemosaics.com/>
- <https://vimeo.com/372780986>











Assignment Suggestions

- Use geometry (repeating patterns of circles, squares and triangles) to create a design.
- Cut up an image and reassemble the pieces into a new work of art
- Create a design intuitively and organically, perhaps starting in the center and radiating out or let the pieces inform the pattern.
- Use metallic or reflective elements in an artwork.