

Public and Private Faces

How artists portray themselves and other people

Hans Holbein the Younger (1497-1543)

Hans Holbein the Younger was a German painter and printmaker who worked in a Northern Renaissance style, and is considered one of the greatest portraitists of the 16th century. He also produced religious art, satire, and Reformation propaganda, and he made a significant contribution to the history of book design.

<https://www.khanacademy.org/humanities/renaissance-reformation/northern/holbein/v/hans-holbein-the-younger-portrait-of-henry-viii-1540> (Henry VIII)

<https://www.khanacademy.org/humanities/renaissance-reformation/northern/holbein/v/hans-holbein-the-younger-the-ambassadors-1533> (The Ambassadors)













Rembrandt (1606-1669)

Rembrandt Harmenszoon van Rijn was a Dutch draughtsman, painter, and printmaker. An innovative and prolific master in three media, he is generally considered one of the greatest visual artists in the history of art and the most important in Dutch art history.

- <https://www.youtube.com/watch?v=rFMFH8Nf0Zw>





Francisco Goya (1746-1828)

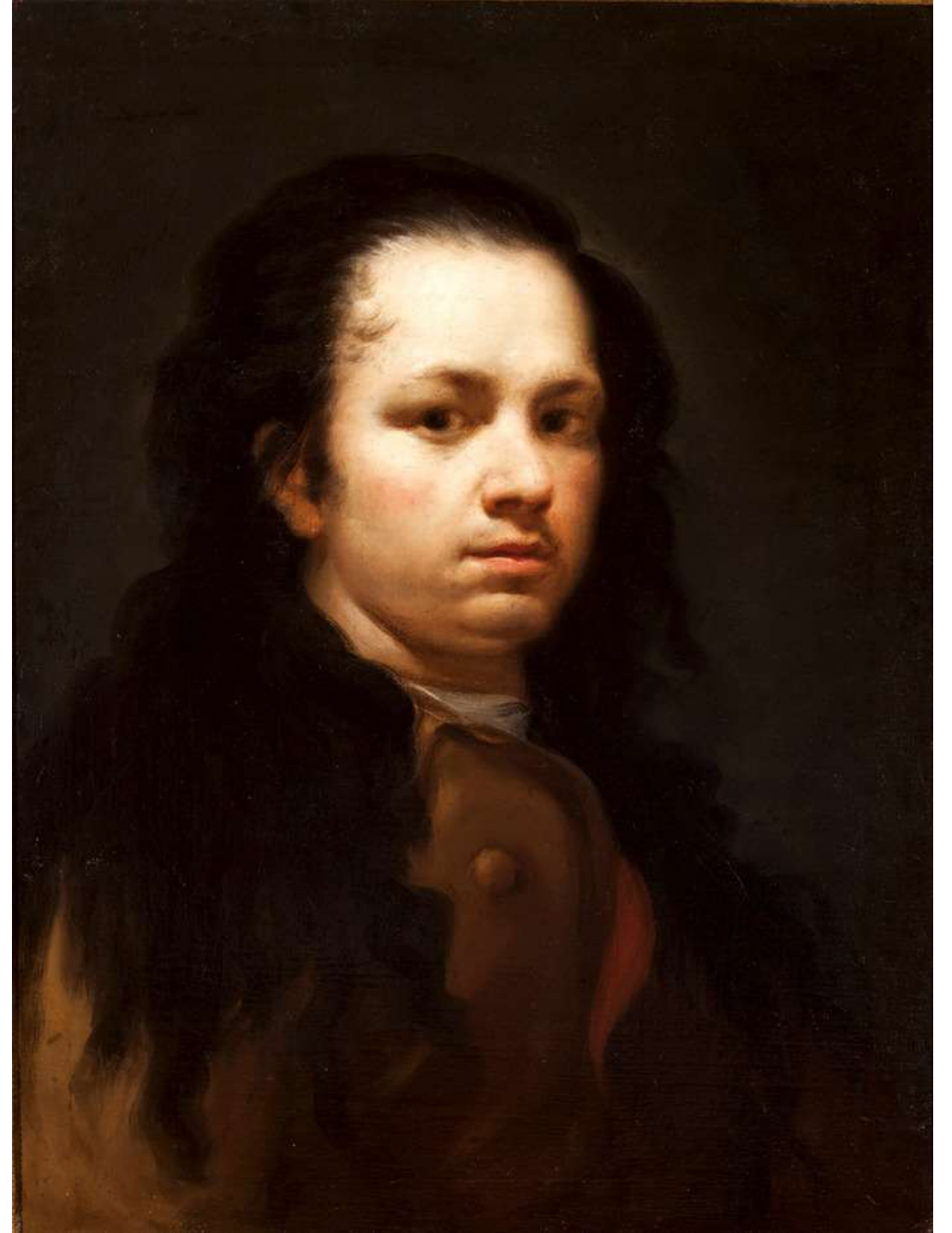
- <http://www.ovovideo.com/en/francisco-goya/> (overview)
- <https://www.youtube.com/watch?v=CYxZoDptVjk> (video)
- <https://www.theguardian.com/artanddesign/2015/oct/11/goya-the-portraits-review-national-gallery-astonishing-show-radical-truthfulness> (Html)
- <https://www.youtube.com/watch?v=d4q2S8-U-bk> (self-portrait)







Soga agradecido a su amigo Amiel: por el acervo y esmero con el que le salva la vida en su aguda y peligrosa enfermedad, padecida a fines del año 1645, a los setenta y tres de su edad. Copiado en 1820.



Élisabeth Vigée Le Brun (1755-1842)

Élisabeth Louise Vigée Le Brun, also known as Madame Le Brun, was a prominent French portrait painter of the late 18th century. Her artistic style is generally considered part of the aftermath of Rococo with elements of an adopted Neoclassical style.

Born in Paris in 1755, [Elisabeth Louise Vigée Le Brun's](#) journey to fame and success was rapid. Having received some training from her portraitist father, who died when she was 12, she was encouraged to continue her artistic studies – although, being a woman, she did not have access to formal training – and by the age of 15 she had already developed a modest clientele for her portraits.

By the age of 19, her works had gained so much attention that her painting materials were seized because she'd been operating as a professional artist without guild or academy membership. She swiftly joined the Académie de St Luc, at a time when very few women were admitted, and by the age of 20, she was established at court.

Her fame skyrocketed in the late 18th century, when she was patronized by Queen Marie-Antoinette; whom she painted some 30 portraits of. It was royal intervention that led to her admittance to the Académie Royale in 1783, having been previously rejected.

<https://www.youtube.com/watch?v=sqhrpkhX2uA>

[Marie Antoinette's Personal Portraitist and the Unlikely Painting of an Indian Ambassador – YouTube](#)













John Singer Sargent (1856-1925)

John Singer Sargent was an American expatriate artist, considered the "leading portrait painter of his generation" for his evocations of Edwardian-era luxury. He created roughly 900 oil paintings and more than 2,000 watercolors, as well as countless sketches and charcoal drawings.

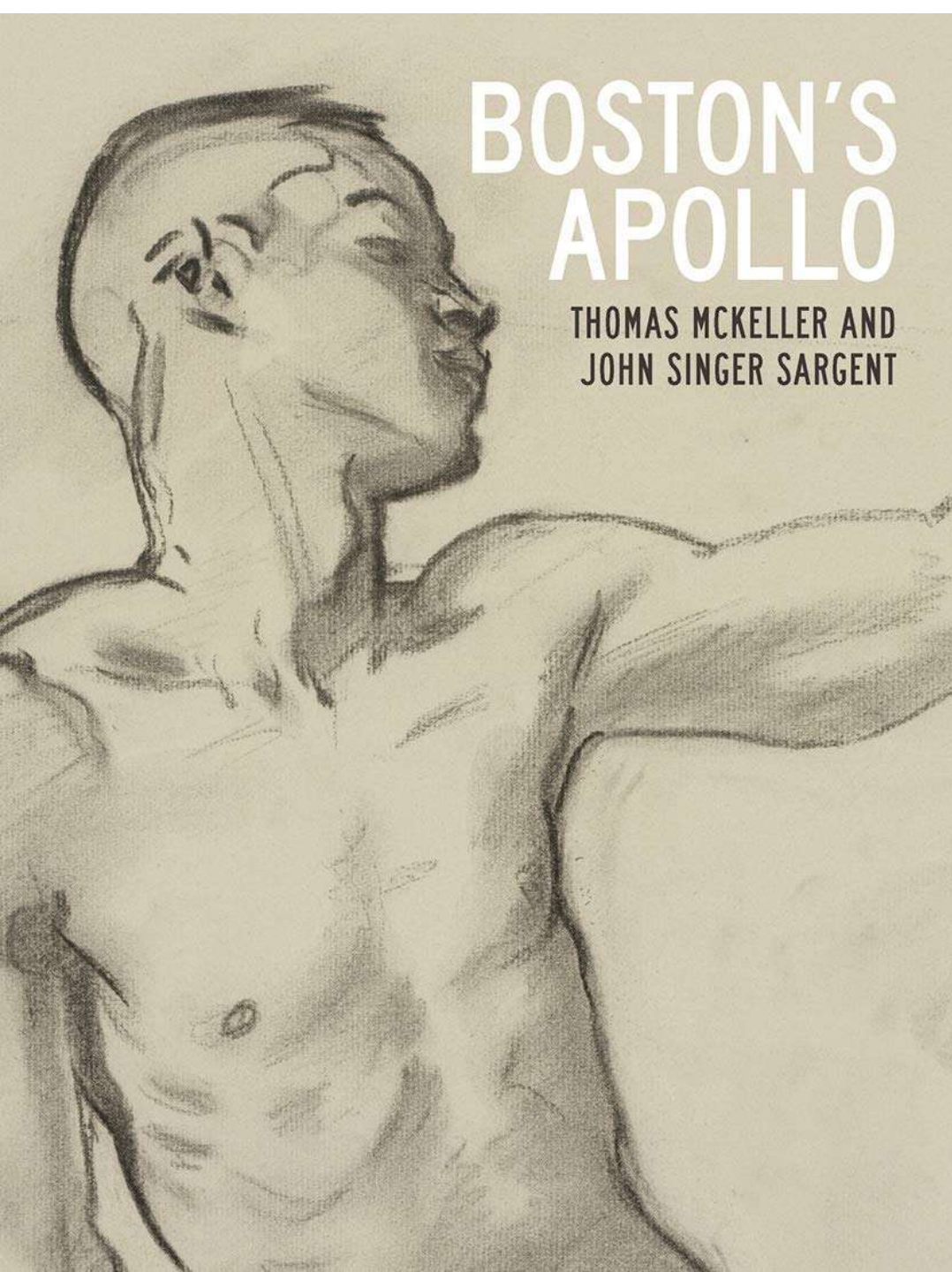
- <https://www.youtube.com/watch?v=bcPANMzI7qk> (portraits)
- <https://www.themorgan.org/exhibitions/john-singer-sargent> (charcoal portraits short)
- <https://www.pbs.org/newshour/show/the-unveiling-of-painter-john-singer-sargents-unsung-muse>
- <https://www.youtube.com/watch?v=TnmdEARSSwE> (muse)













Portrait de Rodin (1884) — Paris, musée Rodin

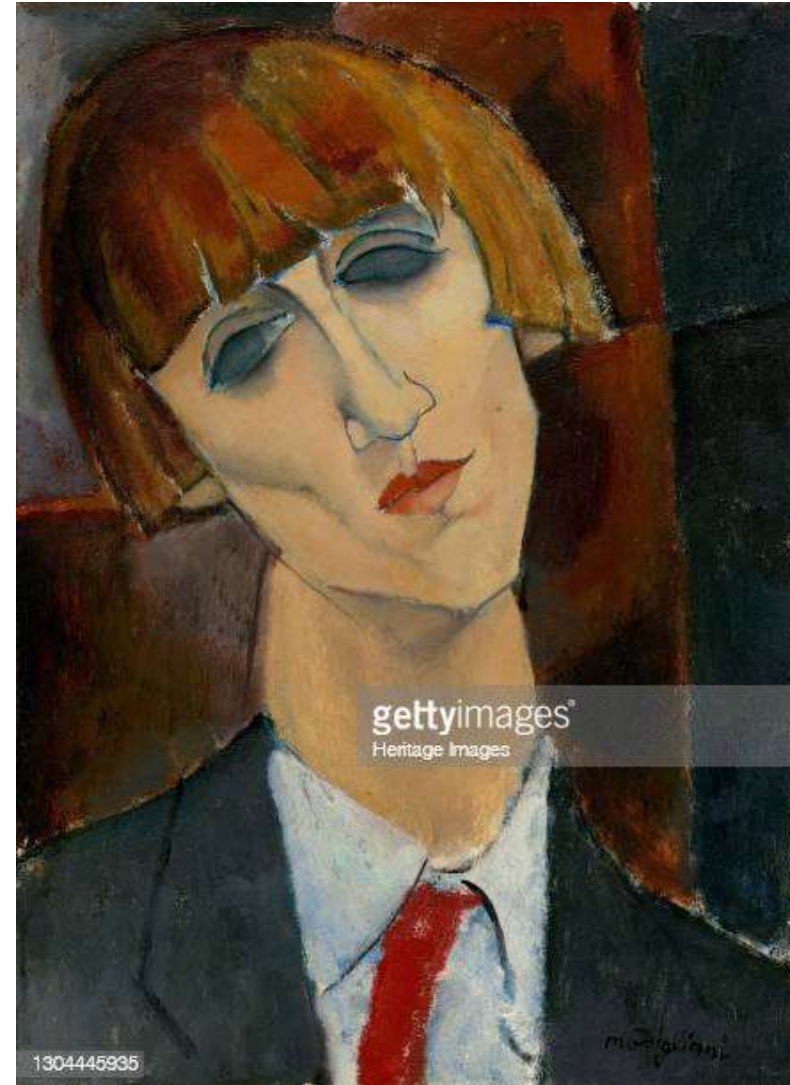
Modigliani (1884-1920)

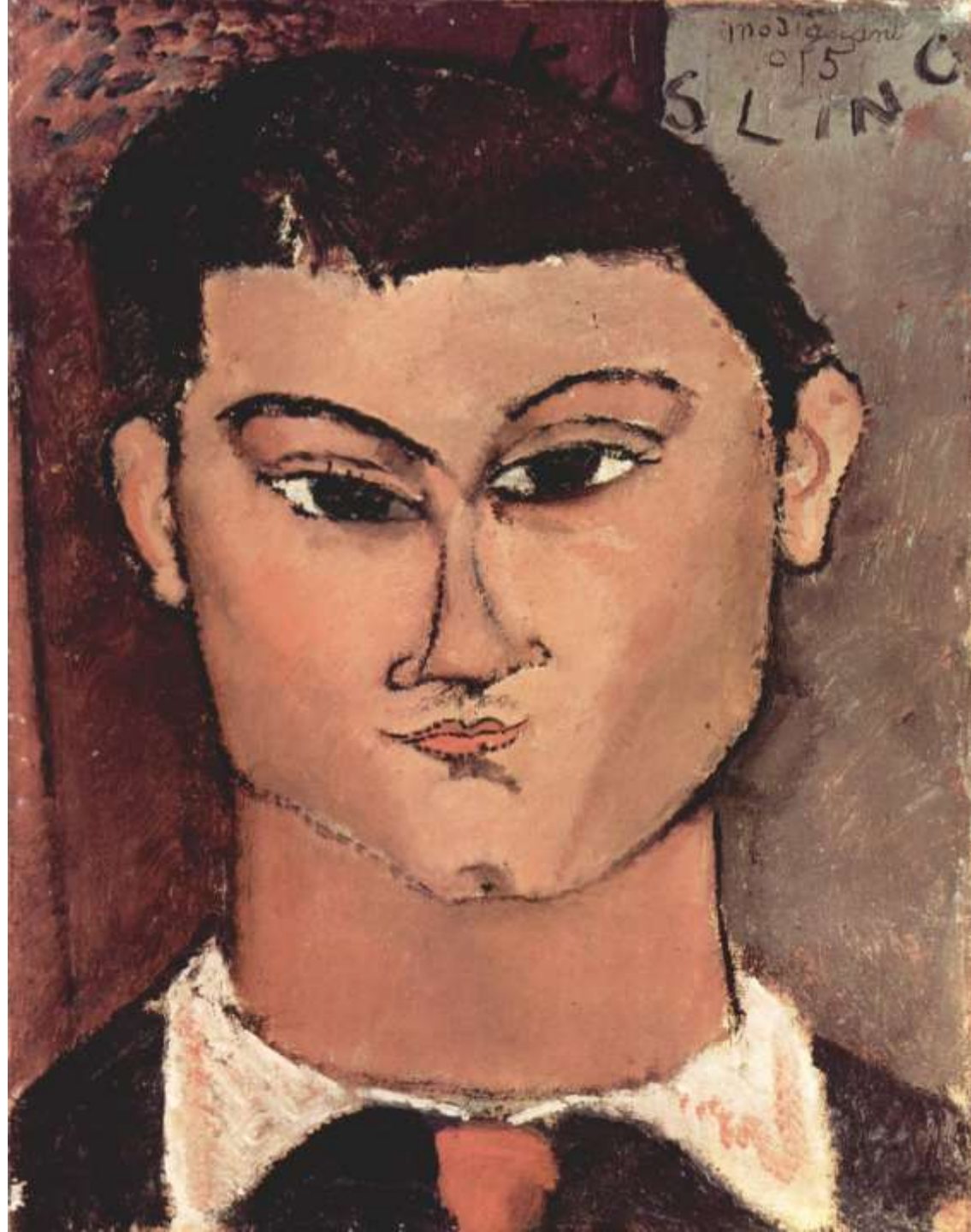
Amedeo Clemente Modigliani was an Italian Jewish painter and sculptor who worked mainly in France. He is known for portraits and nudes in a modern style characterized by a surreal elongation of faces, necks, and figures that were not received well during his lifetime, but later became much sought-after.

- <https://www.youtube.com/watch?v=n1MoBohEzqE>









Frida Kahlo (1907-1954)

Magdalena Carmen Frida Kahlo y Calderón was a Mexican painter known for her many portraits, self-portraits, and works inspired by the nature and artifacts of Mexico.

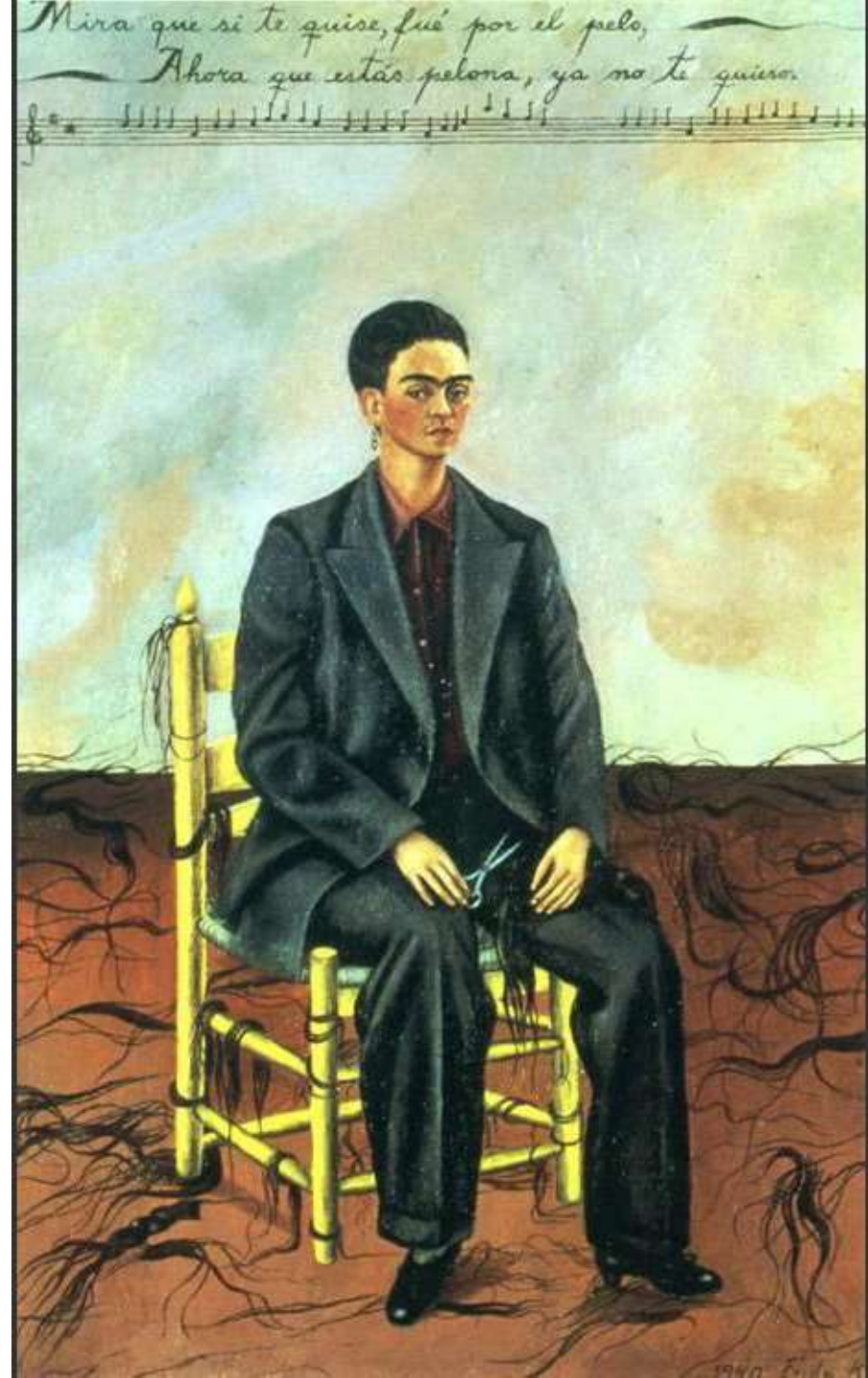
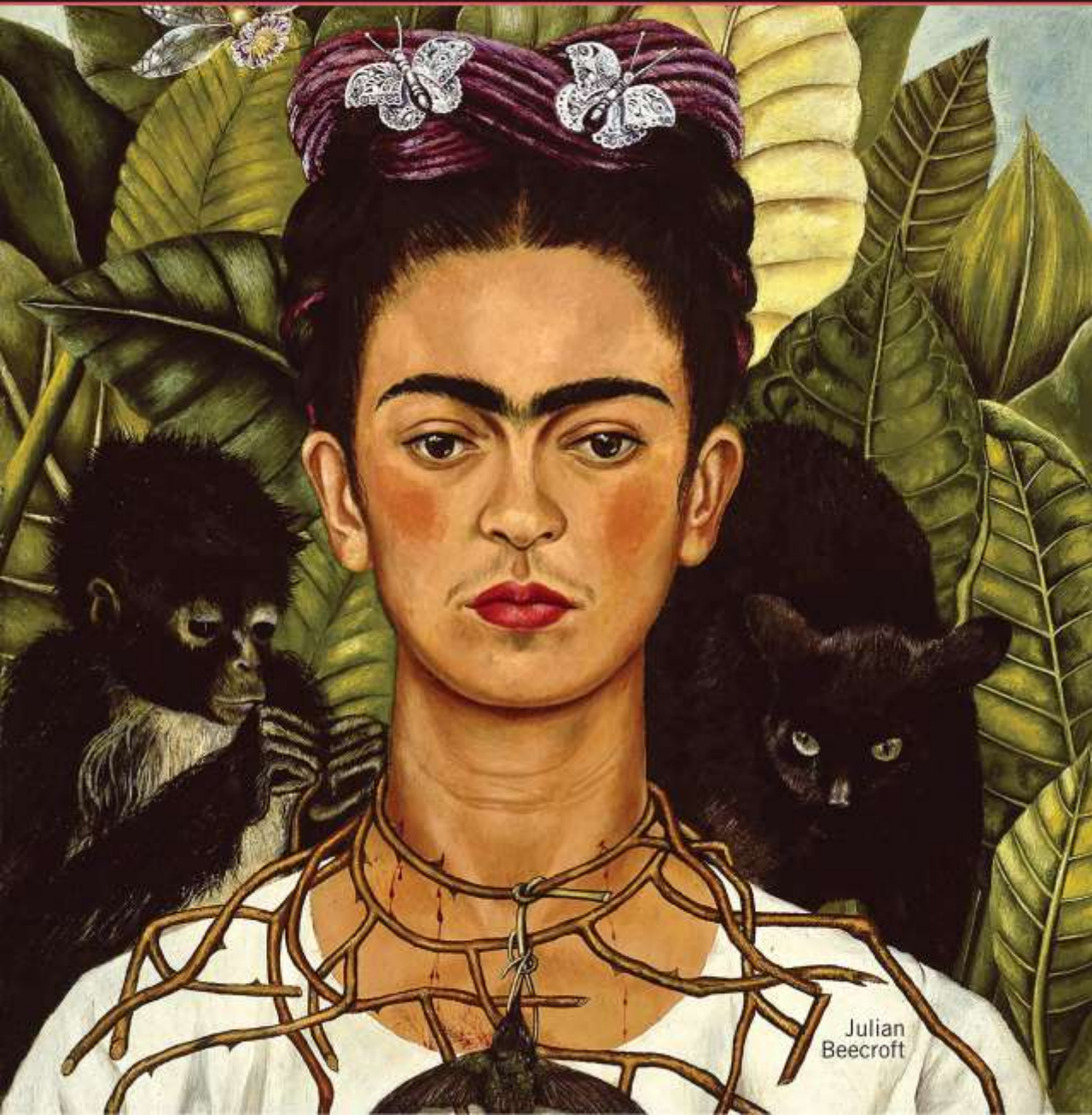
- https://www.brooklynmuseum.org/exhibitions/frida_kahlo
- <https://www.youtube.com/watch?v=B9XYtPqWLB4> (overview)







Frida Kahlo | Masterpieces of Art







Lois Mailou Jones (1905-1998)

Lois Mailou Jones, born in [Boston, Massachusetts](#), was American painter and educator whose works reflect a command of widely varied styles, from traditional landscape to African-themed abstraction.

Lois Mailou Jones has treated an extraordinary range of subjects—from French, Haitian, and New England landscapes to the sources and issues of African-American culture. The scope of her rigorous training in Boston, New York, Paris, Italy, and Africa is equally evident in her costumes, textile designs, watercolors, paintings, and collages.

By the 1920s both European and African-American artists used non-Western art to help them break from prevailing formal styles, and Jones followed that lead. Although her early impressionistic style recurs throughout her career, the bold, emblematic qualities of African art have led her toward abstraction, as they had Post-Impressionist and Cubist artists. The planar design and striking color contrasts in *Les Fetiches* complement the dynamic, essential forms of the objects.

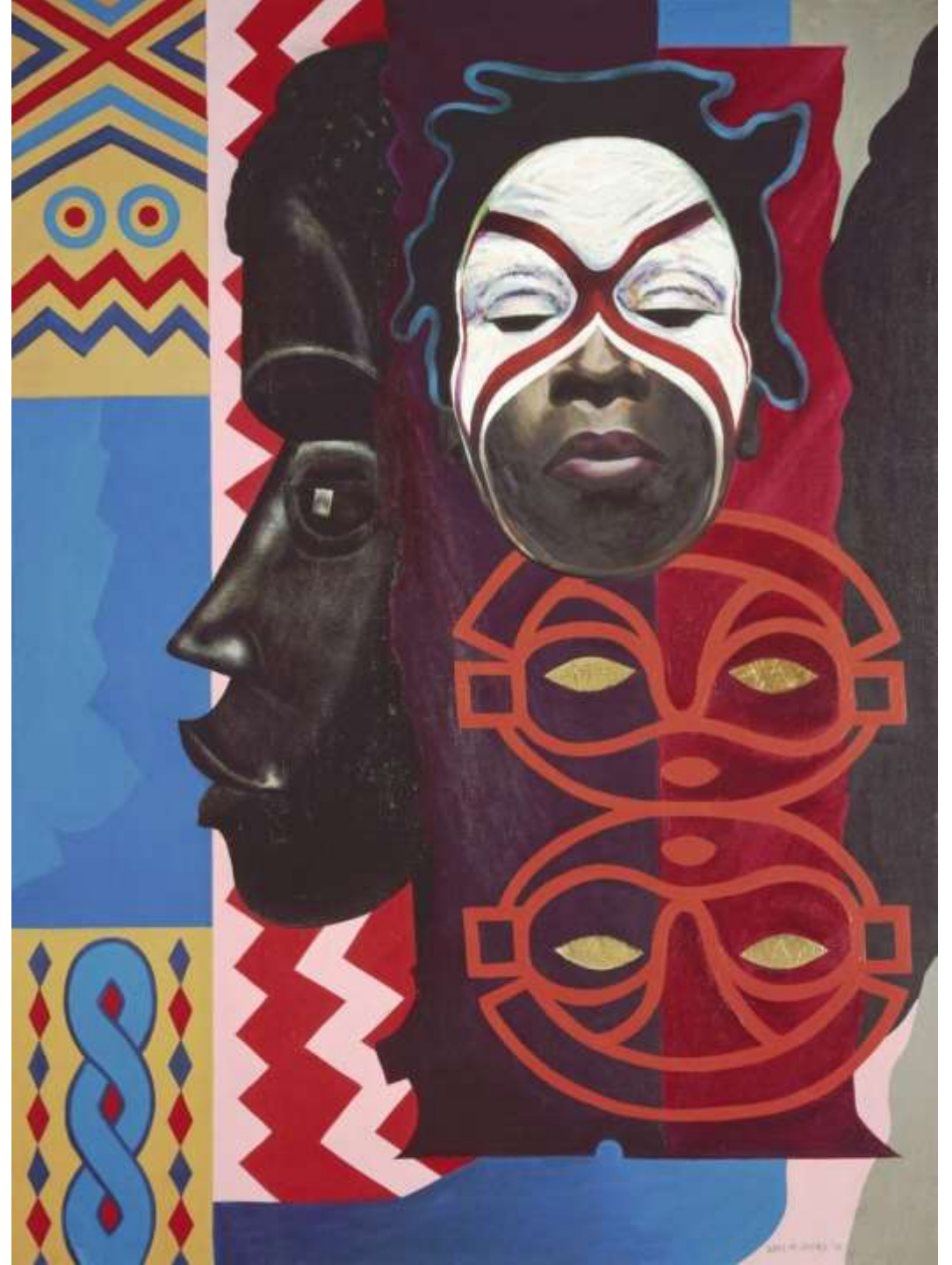
Throughout her career, Jones has championed the international artistic achievement of African-American art. She has also been an important role model for other African-American artists, particularly those involved with her design and watercolor courses at Howard University from 1930 to 1977.

<https://www.youtube.com/watch?v=a8LoGdkitkY> (bio)

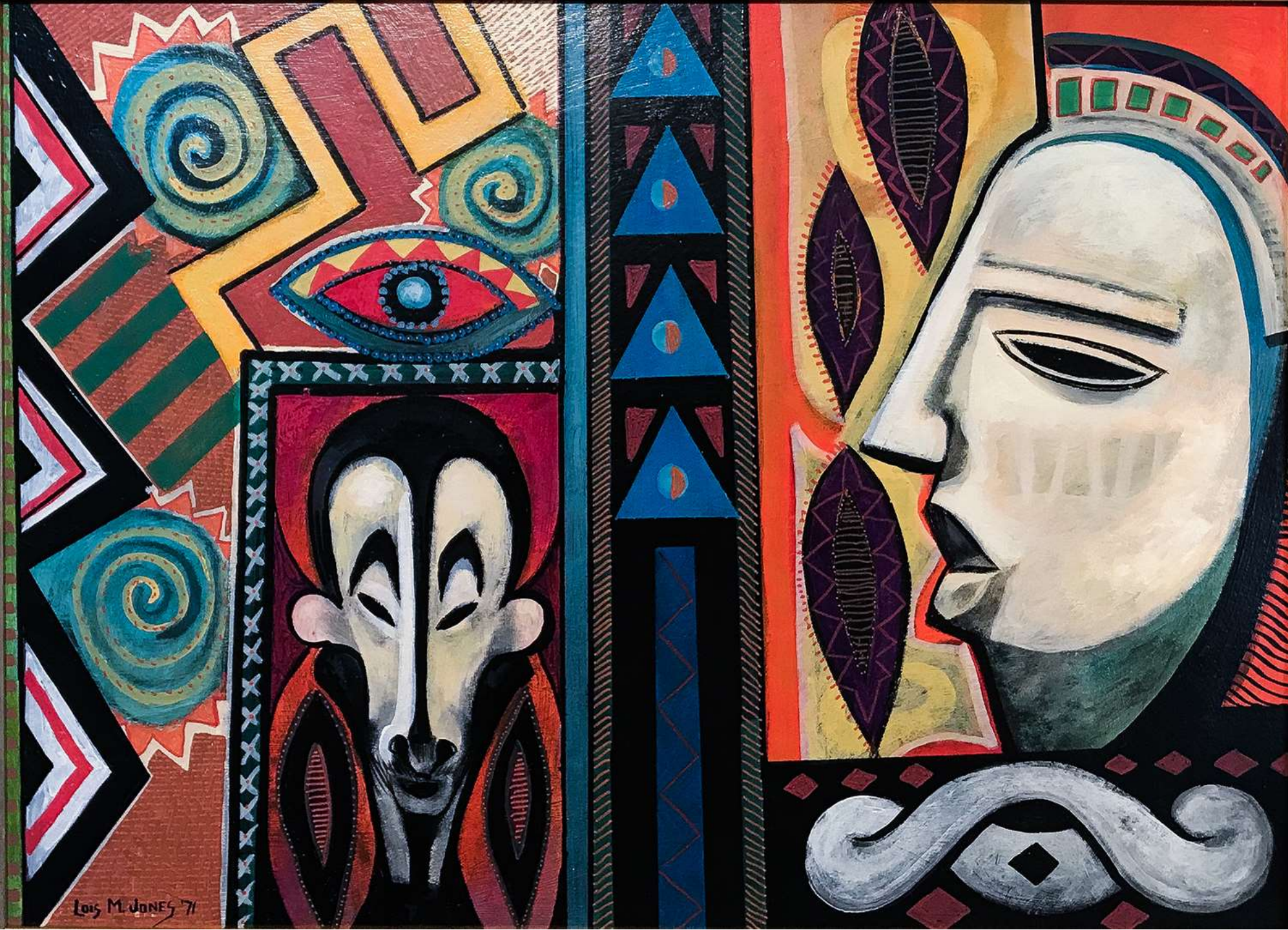
<https://www.youtube.com/watch?v=q6aLZ222hKs> (her)

<https://www.youtube.com/watch?v=ey9rUxtuH14> (short)













Alice Neel (1900-1984)

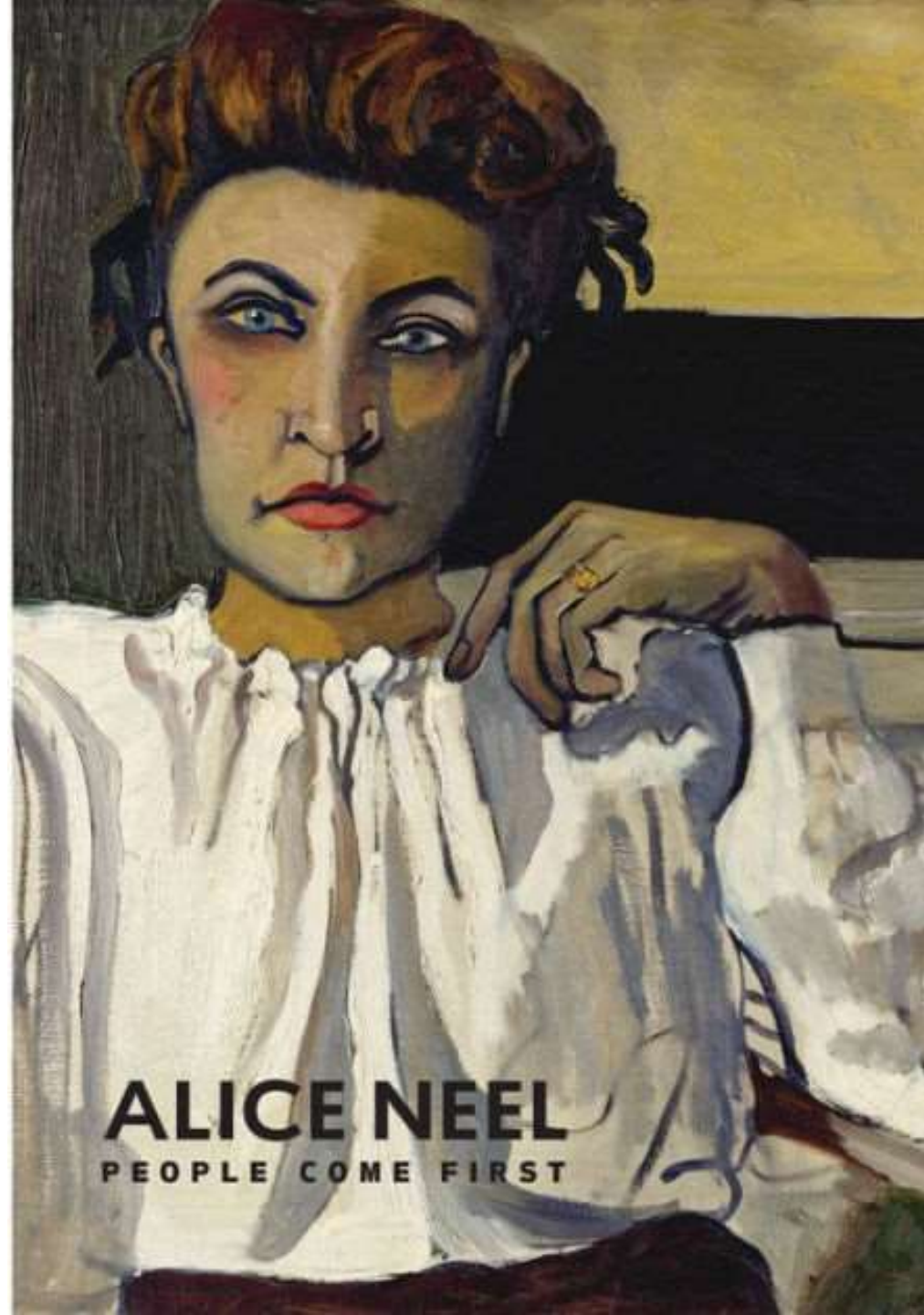
Alice Neel was an American visual artist, who was known for her portraits depicting friends, family, lovers, poets, artists, and strangers. Her paintings have an expressionistic use of line and color, psychological acumen, and emotional intensity.

https://www.youtube.com/watch?v=PCB0_d7H3rE

[Sitting for Alice: Linda Nochlin – YouTube](#)



























Lucian Freud (1922-2011)

Lucian Michael Freud, was a British painter and draughtsman, specializing in figurative art, and is known as one of the foremost 20th-century portraitists. He was born in Berlin, the son of Jewish architect Ernst L. Freud and the grandson of Sigmund Freud.

His early career as a painter was influenced by [surrealism](#), but by the early 1950s his often stark and alienated paintings tended towards realism. Freud was an intensely private and guarded man, and his paintings, completed over a 60-year career, are mostly of friends and family. They are generally somber and thickly [impastoed](#), often set in unsettling interiors and urban landscapes. The works are noted for their psychological penetration and often discomforting examination of the relationship between artist and model. Freud worked from life studies, and was known for asking for extended and punishing sittings from his models.



<https://www.seventh-art.com/shop/lucian-freud-self-portrait/>

<https://www.youtube.com/watch?v=mfn-4j01DWM> (self-portraits MFA)

<https://www.youtube.com/watch?v=CKZGWM1vf3w> (compared to Rembrandt)

<https://www.youtube.com/watch?v=O-0HtdFohJI>

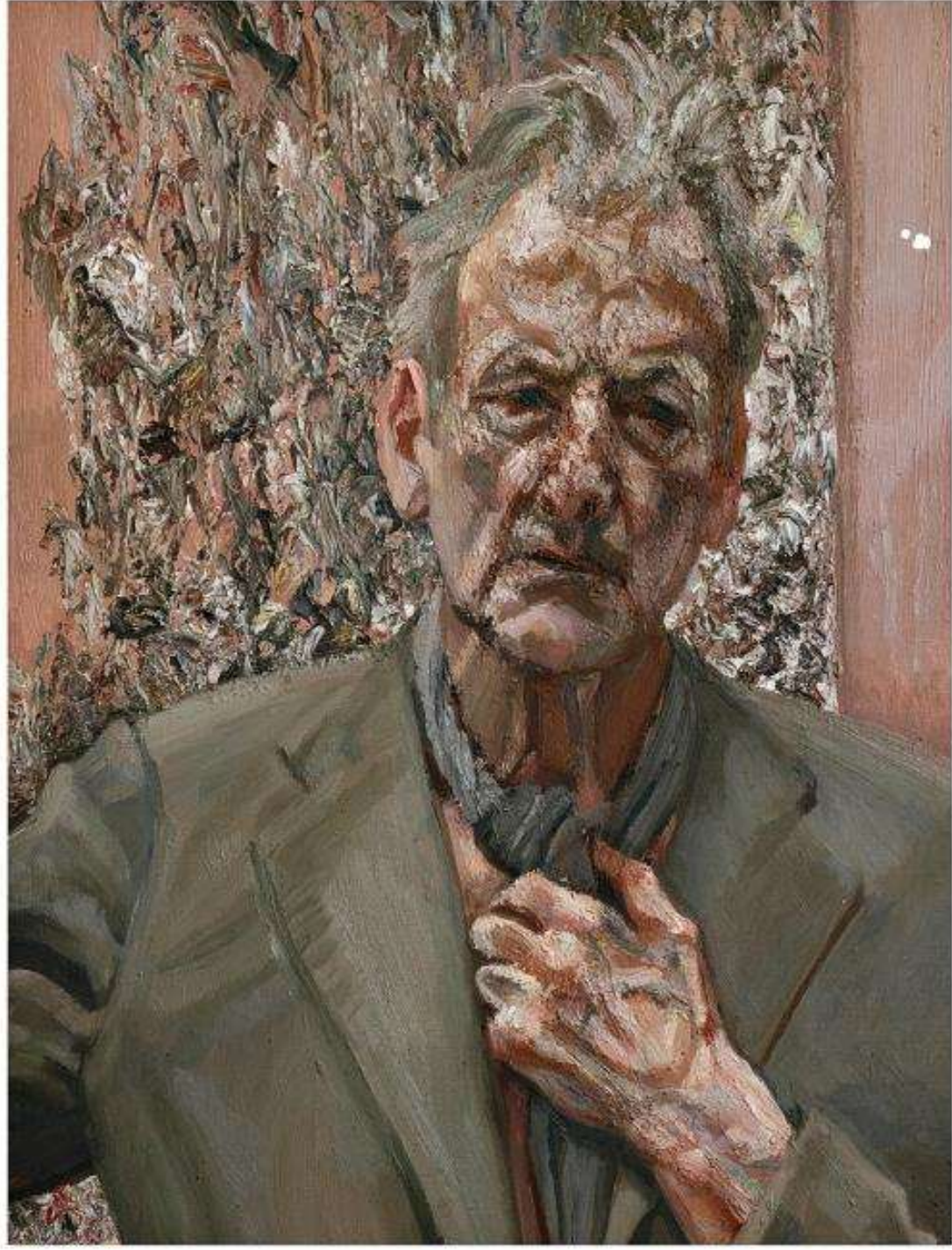
https://www.youtube.com/watch?v=q_J6Aql3aRw (last day of painting)

<https://www.youtube.com/watch?v=4YMV4EyaPMM> (tour of his studio good)









Jenny Saville (1970)

Jennifer Anne Saville RA is a contemporary British painter and an original member of the Young British Artists. She is known for her large-scale painted depictions of nude women

- <https://www.sothebys.com/en/articles/the-groundbreaking-self-portrait-that-launched-jenny-savilles-career>
- <https://www.youtube.com/watch?v=ut6q6Yys94o> (on Rembrandt)





Kehinde Wiley

Kehinde Wiley is an American portrait painter based in New York City, who is known for his highly naturalistic paintings of African Americans, frequently referencing the work of Old Master paintings.

Los Angeles native and New York based visual artist, Kehinde Wiley has firmly situated himself within art history's portrait painting tradition. As a contemporary descendent of a long line of portraitists, including Reynolds, Gainsborough, Titian, Ingres, among others, Wiley, engages the signs and visual rhetoric of the heroic, powerful, majestic and the sublime in his representation of urban, black and brown men found throughout the world.

<http://kehindewiley.com/>

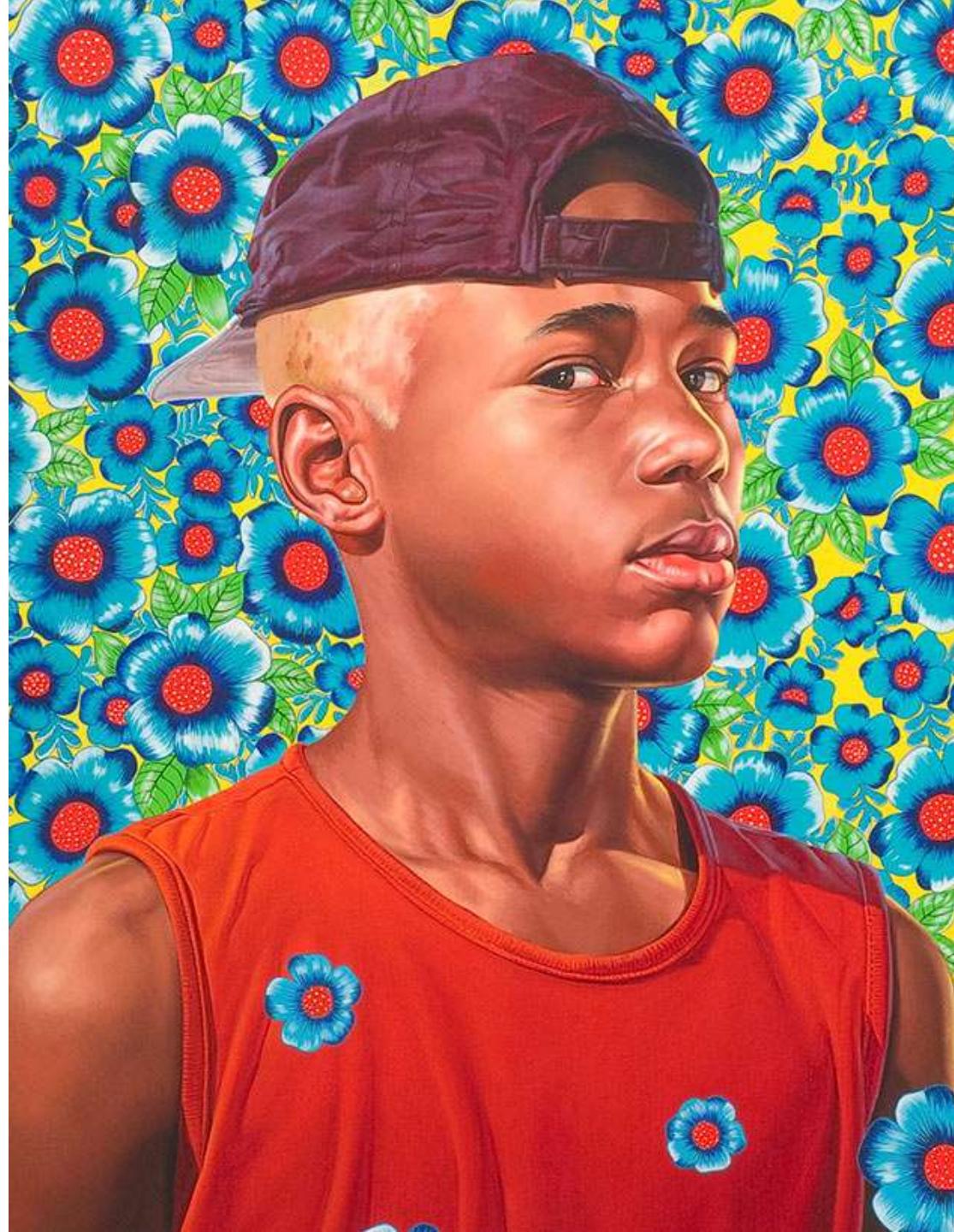
<https://www.youtube.com/watch?v=dHx4IFPqPil&t=28s>







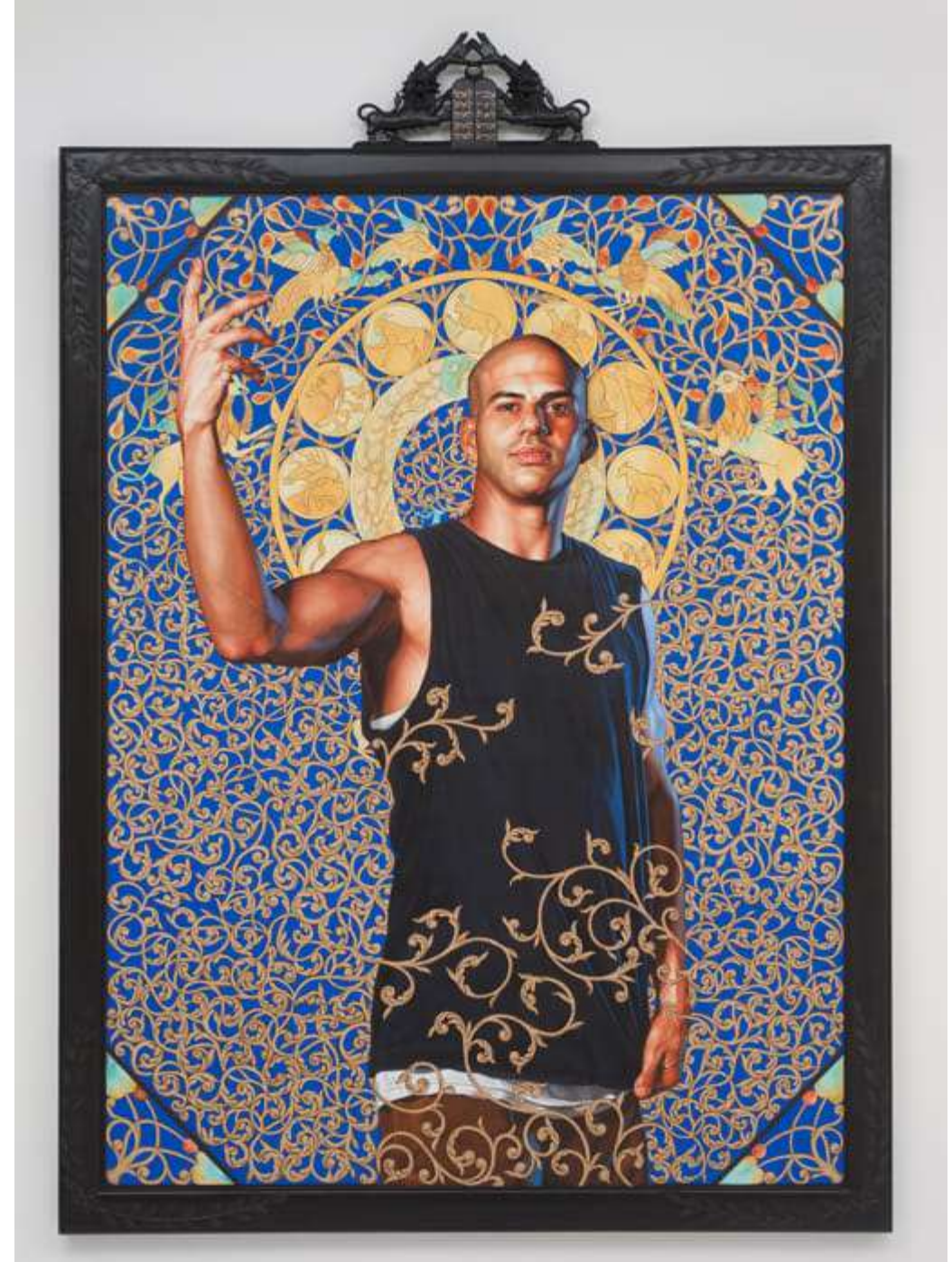
















Assignment Suggestions...

- Make a portrait of your favorite person (or animal).
- Make a self portrait in any style
- Use symbolism in a portrait