

Artist House and Garden

Artists at home in the garden

Claude Monet (1840-1926)

Claude Monet noticed the village of Giverny while looking out of a train window. He made up his mind to move there and rented a house and the area surrounding it. In 1890 he had enough money to buy the house and land outright and set out to create the magnificent gardens he wanted to paint.

Some of his most famous paintings were of his garden in Giverny, famous for its rectangular *Clos Normand*, with archways of climbing plants entwined around colored shrubs, and the water garden, formed by a tributary to the [Epte](#), with the Japanese bridge, the pond with the [water lilies](#), the wisterias and the azaleas.

Beginning around 1887, several American Impressionist artists settled to work in Giverny, drawn by the landscapes, the overall atmosphere, and the presence of Monet. These included [Willard Metcalf](#), [Louis Ritman](#), Theodore Wendel, and [John Leslie Breck](#). Soon many American extended their visits from summer through the entire year.^[2] American painter [Theodore Earl Butler](#) married Monet's stepdaughter and sometime-model [Suzanne Hoschedé](#) there in 1892.

<https://www.youtube.com/watch?v=zTO81733N10> (garden behind the paintings)

- <https://www.youtube.com/watch?v=rjWx2WNXFF4> (go with this one)
- <https://www.youtube.com/watch?v=3UhHT5TmJvw> (longer)







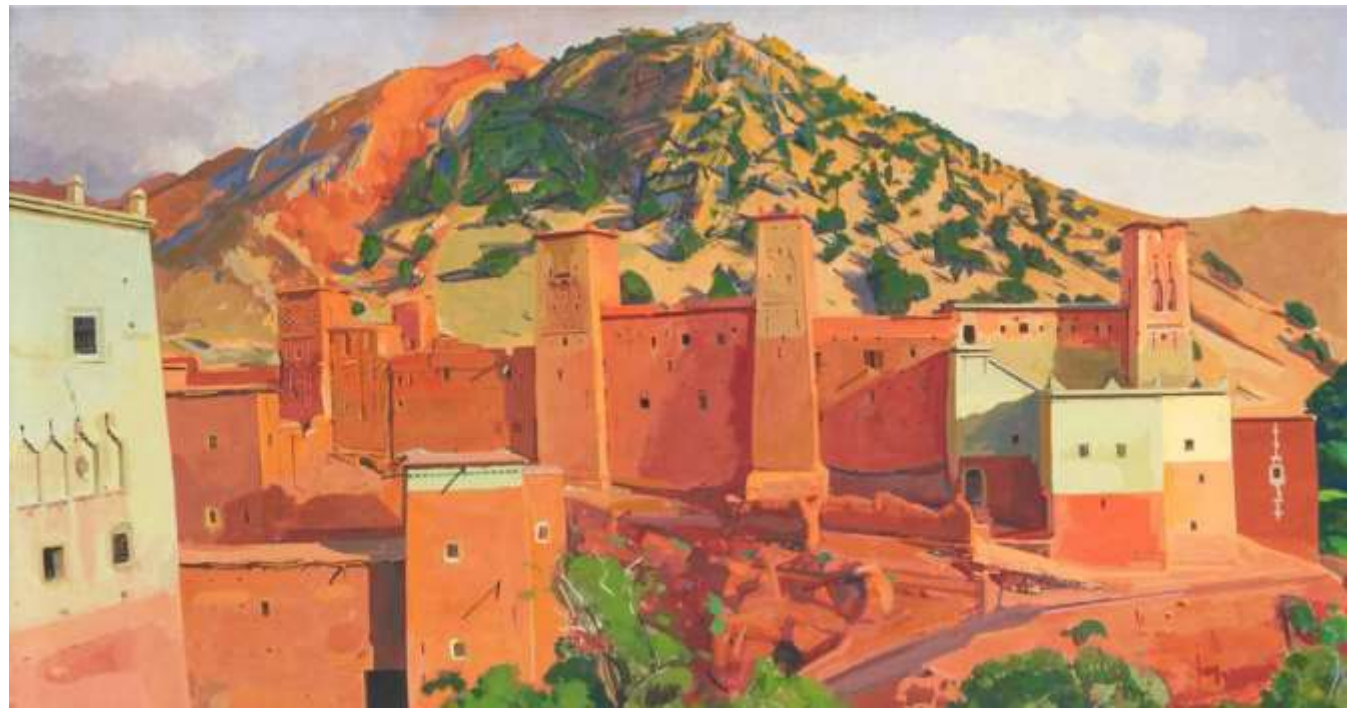


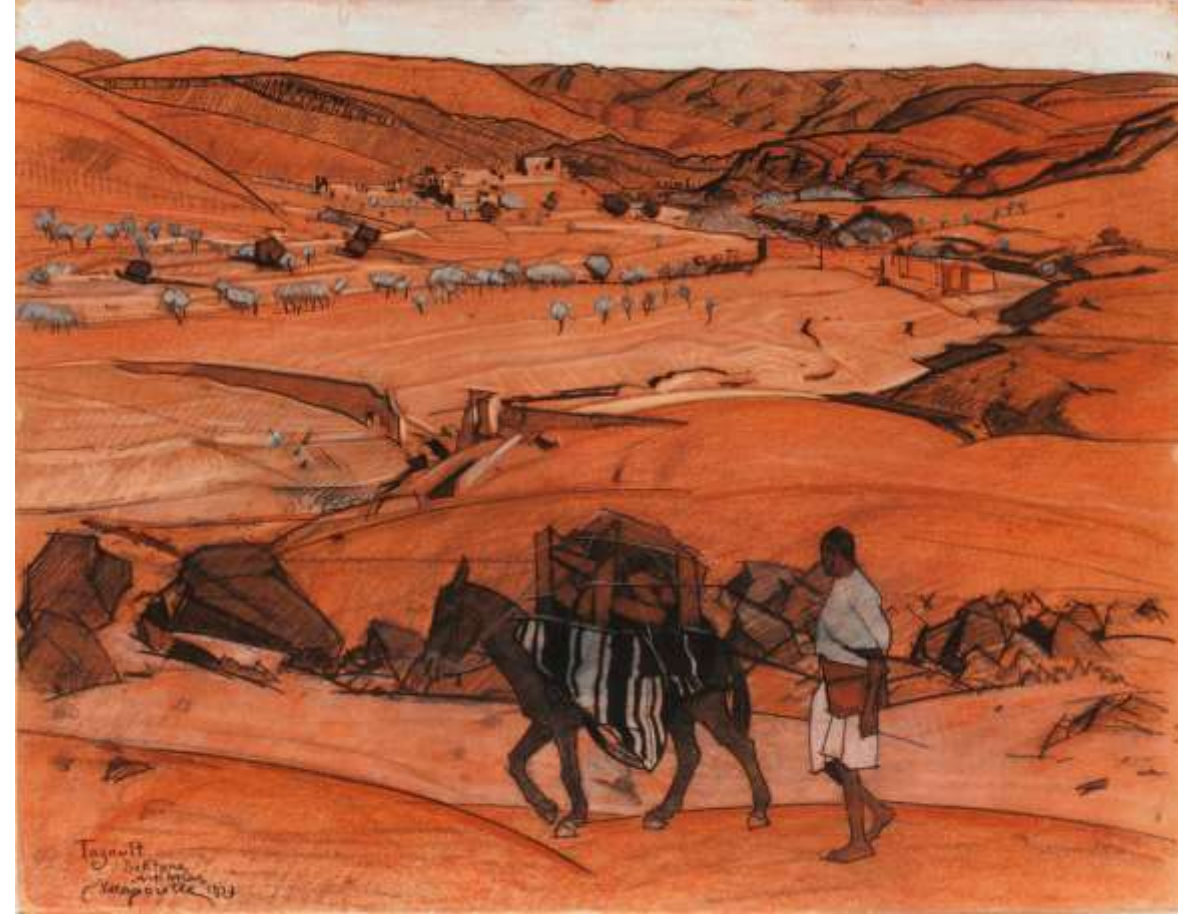


Jacques Majorelle (1886-1962)

Jacques Majorelle (1886-1962) was the son of a celebrated furniture designer of Nancy, France. Suffering from heart problems, he came to Marrekesh for his health in 1919 and immediately saw the painterly potential of southern Morocco. In 1924 he acquired land, called himself a “gardenist” as well as an “artist” and began the lifelong project of creating a unique botanical expression around his studio. He opened his garden to the public in 1947. Upon his death in a car accident the property fell into disorder — until it was rediscovered by couturier Yves Saint-Laurent and his artist-friend, Pierre Berge. Majorelle’s Art-Deco-inspired studio, painted the original bright blue, is now a museum and gallery of Majorelle’s work. Travelers wander among exotic plants and spectacular cacti.



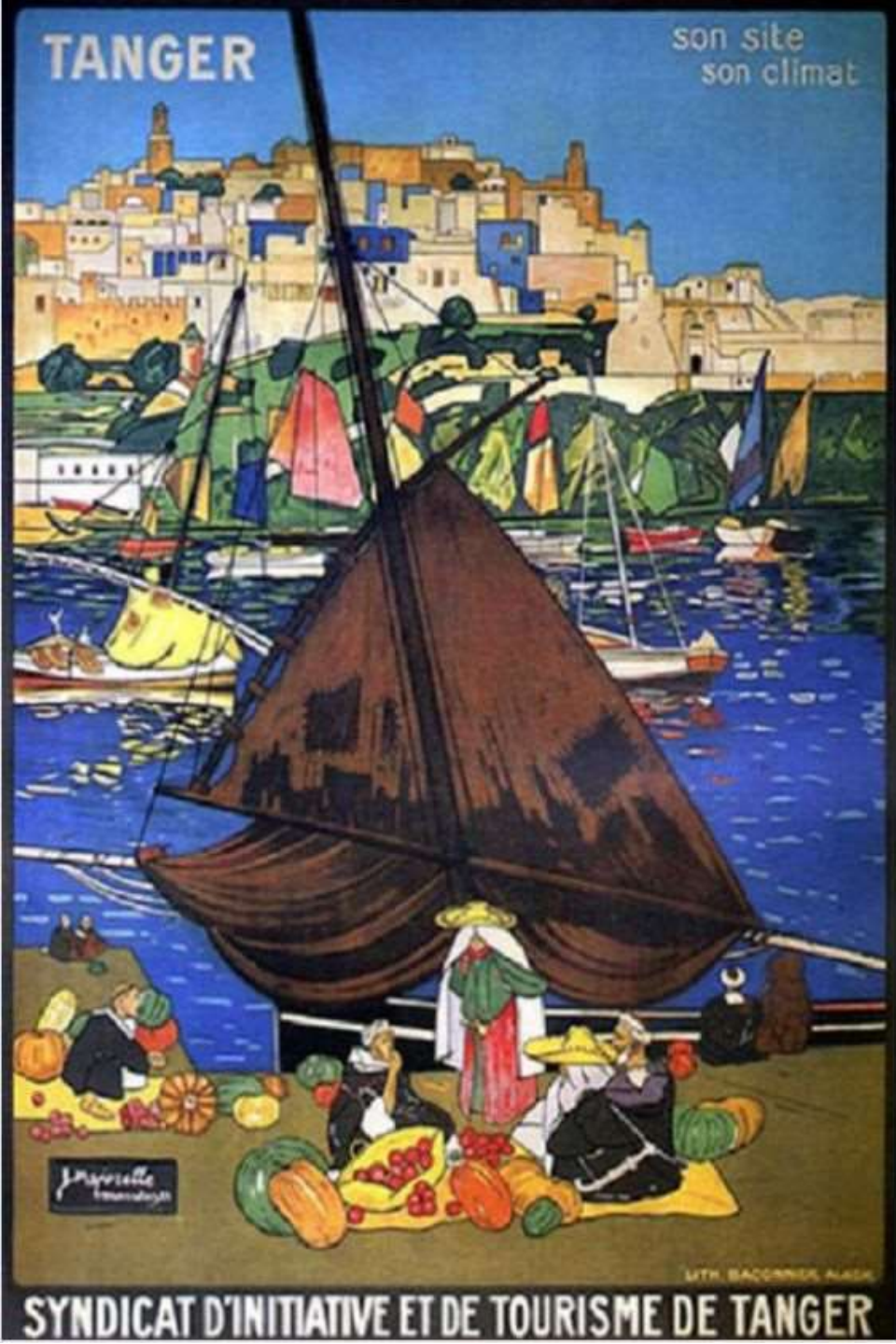












Majorelle Garden

The Majorelle Garden is a two and half acre botanical garden and artist's landscape garden in Marrakech, Morocco. It was created by the French Orientalist artist Jacques Majorelle over almost forty years, starting in 1923, and features a Cubist villa designed by the French architect, Paul Sinoir in the 1930s. The property was the residence of the artist and his wife from 1923 until their divorce in the 1950s. In the 1980s, the property was purchased by the fashion designers, [Yves Saint-Laurent](#) and [Pierre Bergé](#) who worked to restore it. Today, the garden and villa complex is open to the public. The villa houses the **Berber Museum** and has recently opened the [Yves Saint Laurent Museum](#).

Before International Klein Blue, there was Majorelle Blue – the vivid shade, thought to be inspired by the cobalt used in Moroccan tiles, that the French painter Jacques Majorelle used throughout his garden and villa-studio in Marrakech. The artist, said to have described ‘this enclosure of floral verdure as [my] most beautiful work’, was beset in his latter years by financial difficulties that forced him open the garden to public admission and later to sell it altogether, after which it fell into disrepair. In 1980 Yves Saint Laurent and Pierre Bergé bought and restored the site, which is now one of Marrakech’s most glamorous attractions

<https://www.youtube.com/watch?v=UcyBZxOC6zs> (restoring the gardens)

- <https://www.youtube.com/watch?v=PBduOC3MEYA> (garden no words)
- <https://www.youtube.com/watch?v=PBduOC3MEYA> (art no words)













Frida Kahlo—Casa Azul

In photographs and self-portraits, Kahlo's hair often resembles a miniature flowerbed in its own right. The blooms threaded through her braids were likely sourced from her walled garden at Casa Azul, the house where Kahlo was born in 1907 and died in 1954. Alongside flowers, the artist cultivated fruit trees—orange, apricot, and pomegranate—and plants native to her beloved Mexico, including prickly pear and agave. She further emphasized her nationalist ideology through a miniature Aztec-inspired pyramid, designed with her husband [Diego Rivera](#) that still stands amidst the vegetation. The couple even used a traditional Mexican pigment to paint the surrounding walls a vivid indigo.

https://www.youtube.com/watch?v=DaZjXZhg_OA (casa azul)

<https://www.youtube.com/watch?v=RuAXggS8KuU> (ny botanical garden)

<http://www.fridakahlo.it/en/scheda-eventi.php?id=15>









Vanessa Bell

Vanessa Bell was an English painter and interior designer, a member of the Bloomsbury Group and the sister of Virginia Woolf.



<https://www.youtube.com/watch?v=XeYaVAHpnz0> (Vanessa)

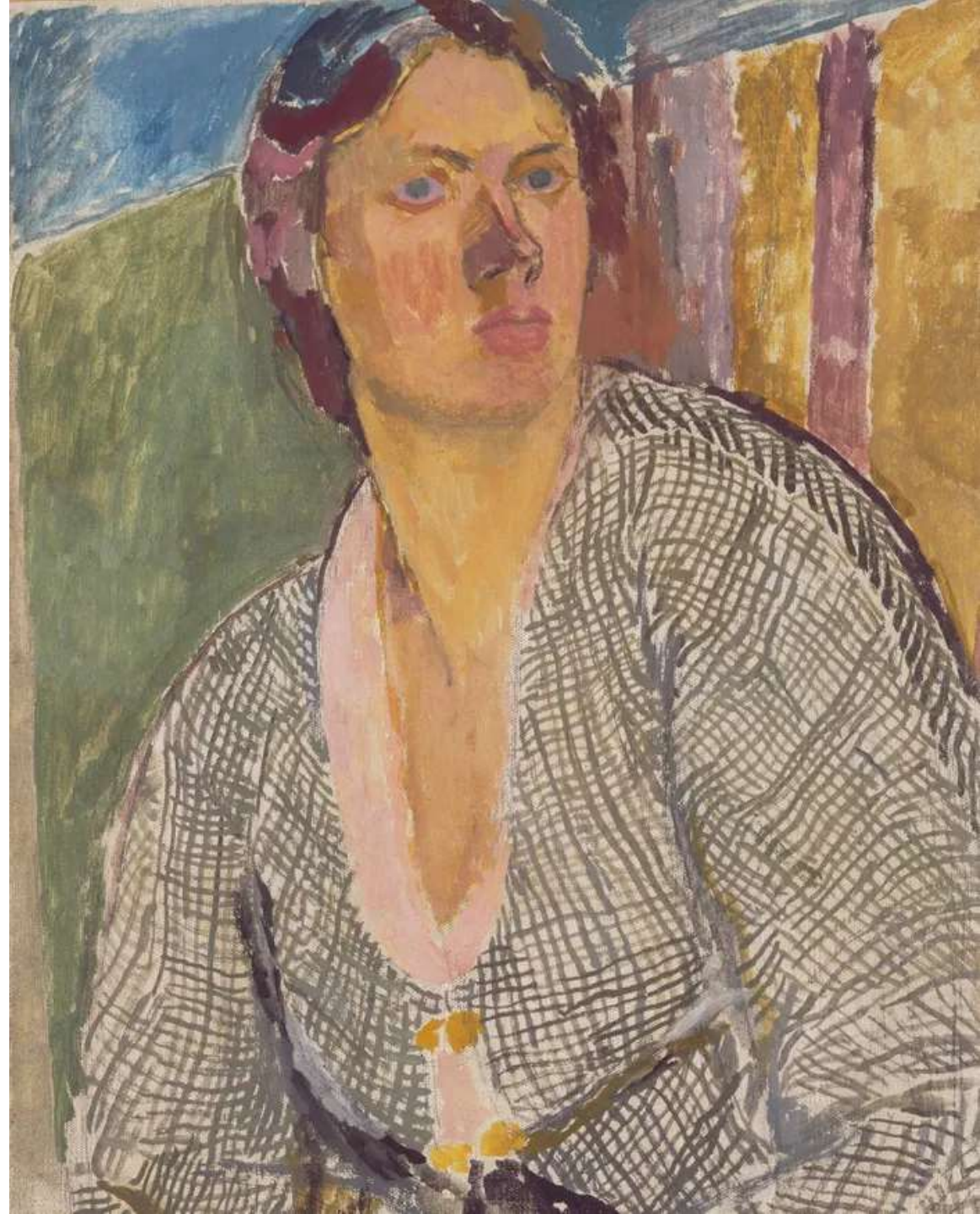
<https://www.youtube.com/watch?v=tG7E7Uoqmng> (Charleston)

<https://www.youtube.com/watch?v=7KZ5l5Kh2QA> (Charleston)

https://www.youtube.com/watch?v=SHqWpCpmQ_4 (Charleston)

<https://www.youtube.com/watch?v=lrTUomJG8Ys>

<https://www.youtube.com/watch?v=dNANPDpBe6Q>





Duncan Grant

Duncan James Corrowr Grant was a British painter and designer of textiles, pottery, theatre sets and costumes. He was a member of the Bloomsbury Group. His father was Bartle Grant, a "poverty-stricken" major in the army, and much of his early childhood was spent in India and Burma.

















Ian Hamilton Finlay

Ian Hamilton Finlay (1925 – 2006) was a poet, writer, visual artist and gardener. He is now internationally recognized for his work in each of these art forms.

- <https://www.youtube.com/watch?v=Jee-4F0Xwxg> (little Sparta)
- <https://www.youtube.com/watch?v=fn2c1g0m1bU> (beautiful)















Derek Jarman (1942-1994)

Michael *Derek* Elworthy *Jarman* was an English film director, stage designer, diarist, *artist*, gardener, and author.











Prospect Cottage

The Art Fund's successful campaign to rescue Derek Jarman's Cottage for the nation, the Garden Museum is holding the first exhibition to focus on his garden, [**Derek Jarman: My Garden's Boundaries are the Horizon.**](#)

Digging deeper into the stories told in [**My Garden's Boundaries are the Horizon**](#), this online exhibition looks at Derek's garden, art, activism, inspirations and legacy. Explore films, interviews with his collaborators, friends and admirers, Howard Sooley's iconic Prospect Cottage photography, stories and objects from the Garden Museum Collection.

<https://gardenmuseum.org.uk/jarmansgarden/> (good)

<https://gardenmuseum.org.uk/jarmansgarden/> (no words)











Emil Nolde (1867-1956)

Emil Nolde was a German-Danish painter and printmaker. He was one of the first Expressionists, a member of Die Brücke, and was one of the first oil painting and watercolor painters of the early 20th century to explore color. He is known for his brushwork and expressive choice of colors.

Until recently, Nolde always had an alibi. Although he joined the Nazi party in 1934, his vividly colored landscapes and still lifes were condemned by the Nazis as degenerate. The artist would go on to greatly exaggerate the Nazi ban on his work in his memoirs after the war. And papers in his archive revealing the extent of his anti-Semitism and unwavering support of Hitler have long been inaccessible to scholars, while museum exhibitions rarely touch on the subject.

That is, until now. One of the two paintings Angela Merkel removed from her walls will be included in a show that, for the first time, directly addresses the artist's support of the Nazis—and his attempt to cover up that fact after the war.

<https://www.youtube.com/watch?v=54uENoMCoUo> (Garden)

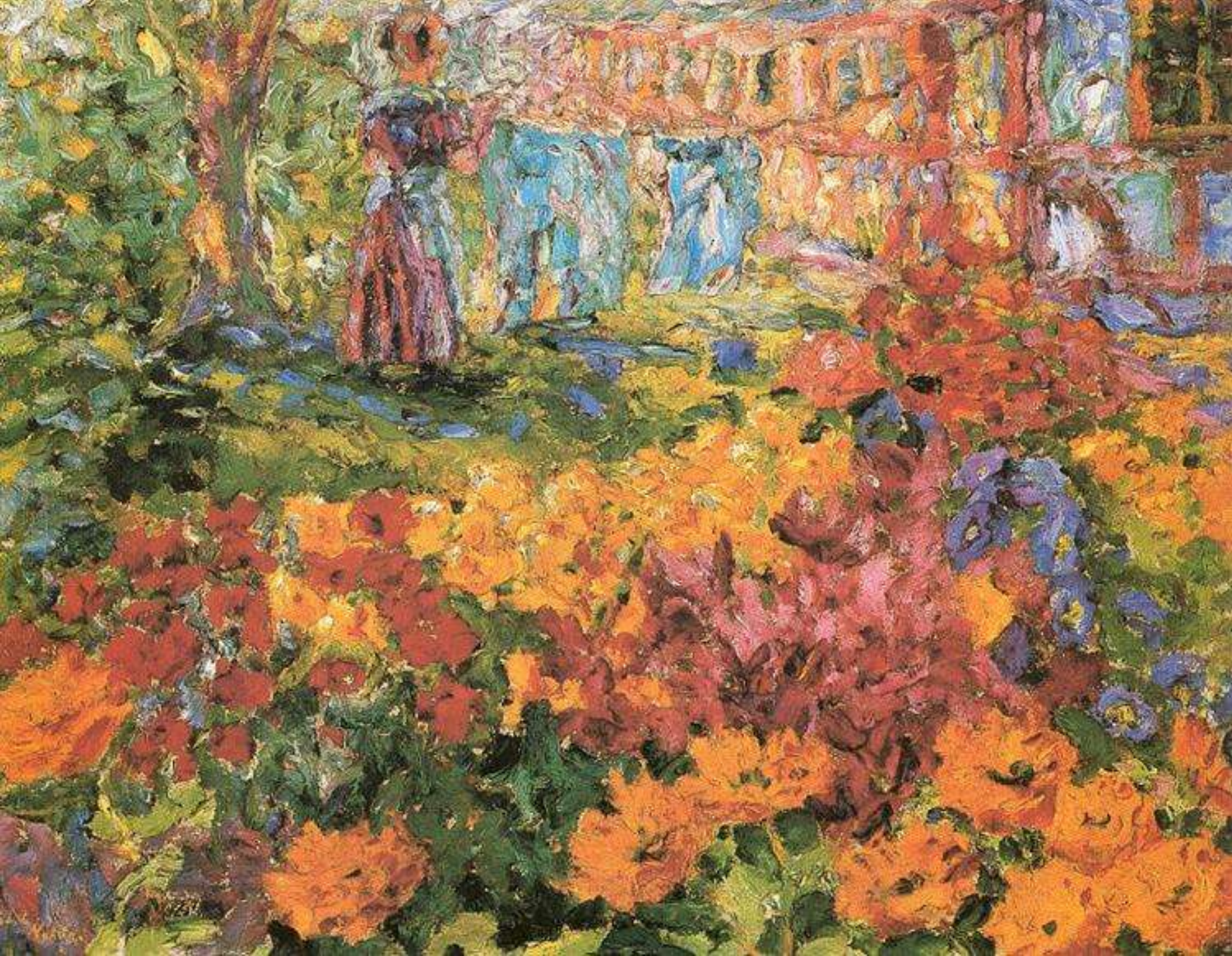






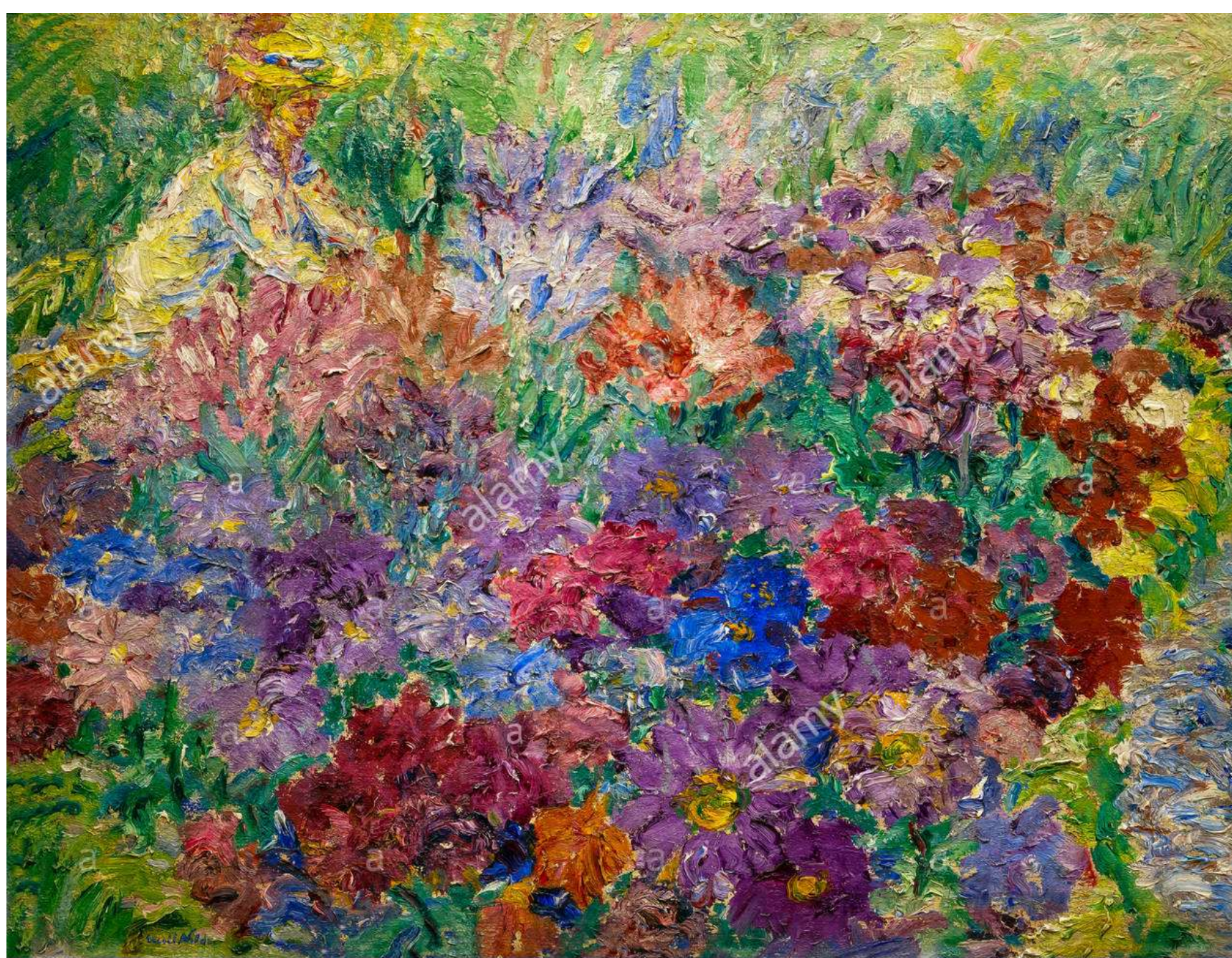










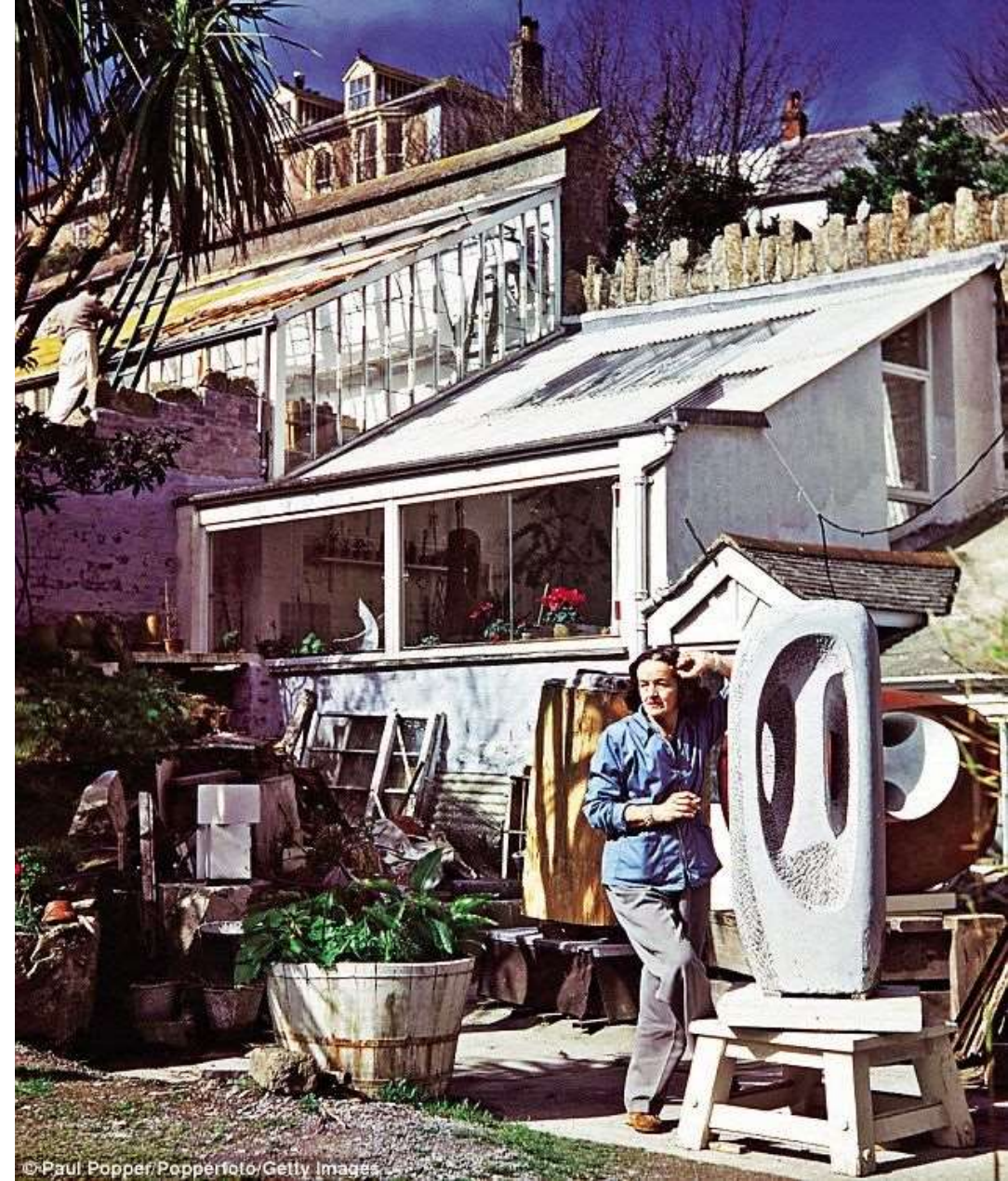


Barbara Hepworth

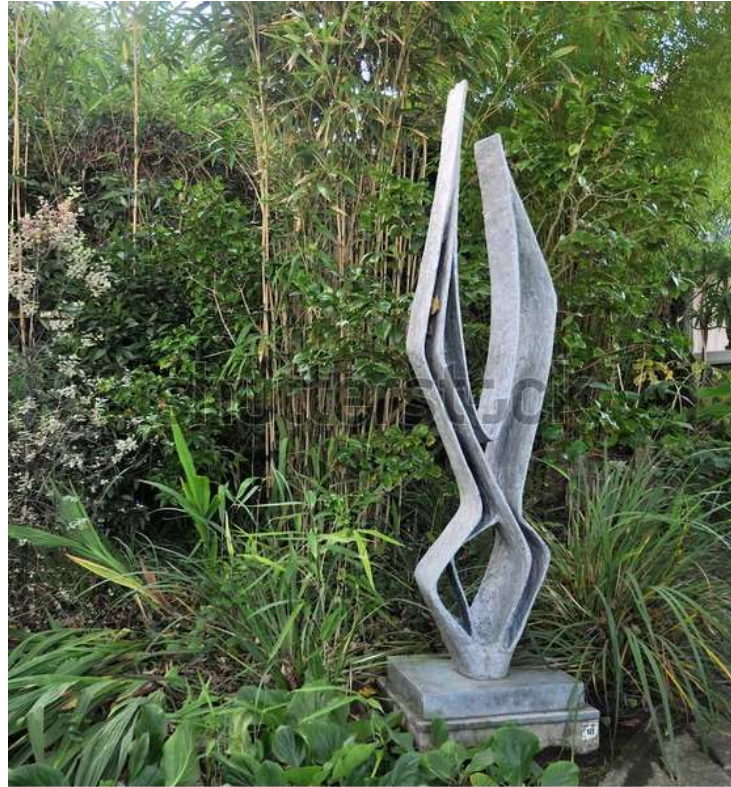
Trewyn Studio and Garden, Barbara Hepworth

Dame Jocelyn Barbara Hepworth DBE was an English artist and sculptor. Her work exemplifies Modernism and in particular modern sculpture. Along with artists such as Ben Nicholson and Naum Gabo, Hepworth was a leading figure in the colony of artists who resided in St Ives during the Second World War.

- <https://www.tate.org.uk/art/artists/dame-jocelyn-barbara-hepworth-1274/barbara-hepworth-sculpture-garden>







www.shutterstock.com • 535211335



Gertrude Jekyll

Gertrude Jekyll VMH was a British horticulturist, garden designer, craftswoman, photographer, writer and artist. She created over 400 gardens in the United Kingdom, Europe and the United States, and wrote over 1,000 articles for magazines such as Country Life and William Robinson's The Garden.

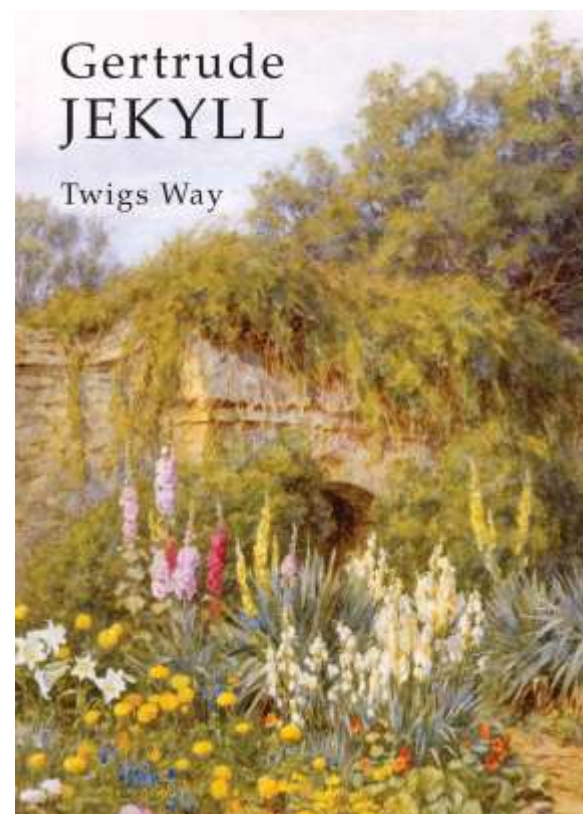
Munstead Wood

https://www.youtube.com/watch?v=pKVKcpE_glg









Assignment Suggestions...

- Use Majorelle Blue in an artwork
- Paint a piece of furniture
- Create an artwork for your garden
- Incorporate some aspect of your garden into an artwork
- Plant something