

Ab Ex 2

You picked 'em

Morris Louis (1912-1962)

Morris Louis Bernstein, known professionally as Morris Louis, was an American painter. During the 1950s he became one of the earliest exponents of Color Field painting.

The work of Morris Louis is essentially about color. The major figure of the Washington color field painters, Morris Louis Bernstein was born in Baltimore, Maryland. He studied at the Maryland Institute of Fine and Applied Arts and during the 1930s worked in New York. In 1952 Louis moved to Washington, D.C., where he became an instructor at the Washington Workshop Center. Through his friendship with painter Kenneth Noland, he met the critic Clement Greenberg who encouraged them both to visit Helen Frankenthaler's studio. The influence of her staining technique was profound, and Louis began to investigate the potential of this technique to give color a new role in his abstract painting. He thinned out his quick-drying acrylic paint and poured it onto unprimed canvas, controlling the flow of the pigment by moving the canvas or the scaffolding to which it was loosely stapled. Staining enabled Louis to achieve an impersonal quality, in contrast to the prevailing abstract expressionist style that emphasized the artist's gestures through brushwork. On his large canvases, Louis presented color in terms of its purely visual qualities, creating works of fresh, unpredictable beauty.

<https://www.youtube.com/watch?v=mtrDW1UcNTQ> (4 mins—restoration)

<https://www.youtube.com/watch?v=nslr0t97vTY> (4 mins)

<https://www.youtube.com/watch?v=IGPqIA19cvg> (shows the making of a soak stain painting)



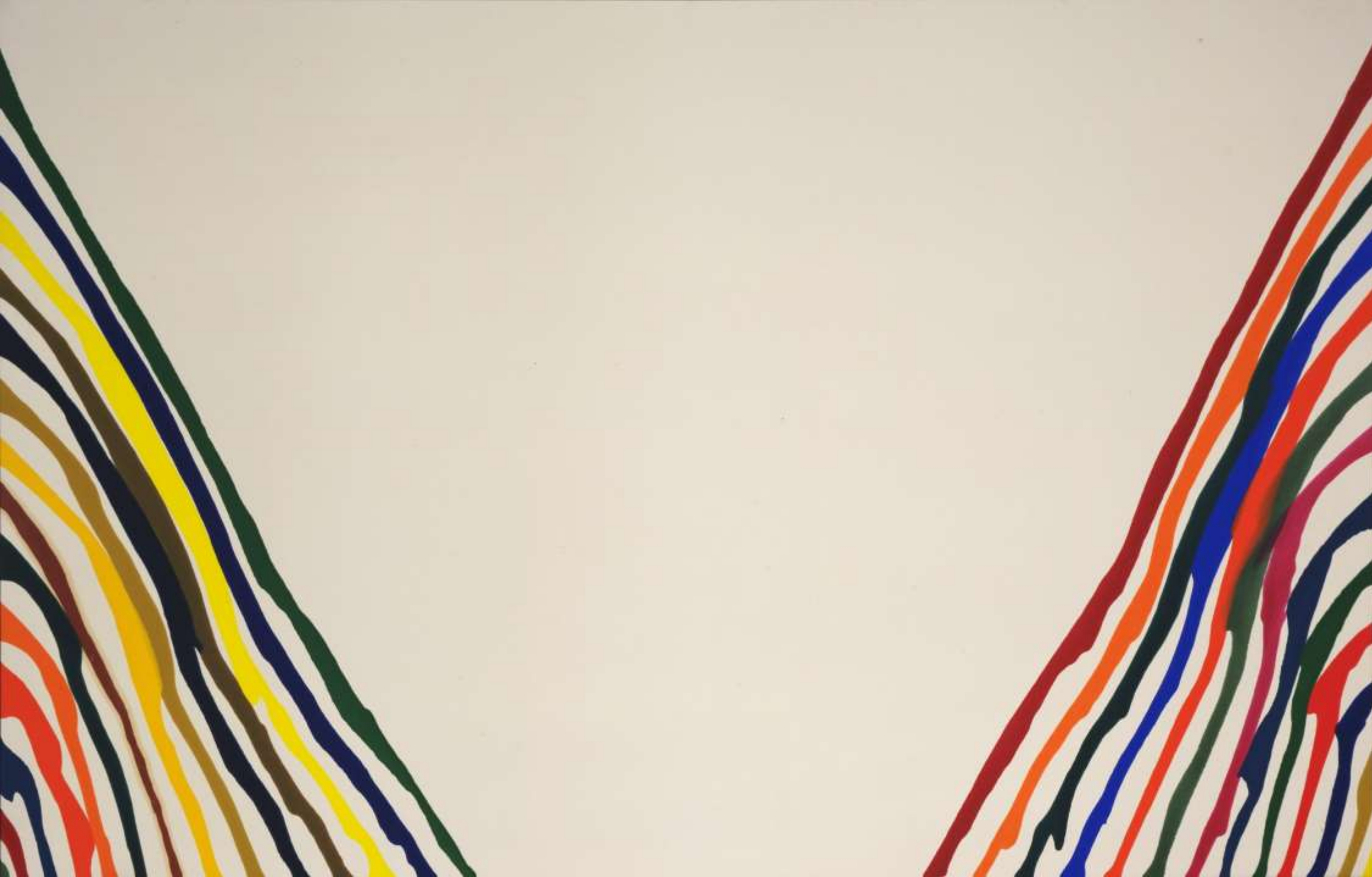














Kenneth Noland (1924-2010)

Kenneth Noland was an American painter. He was one of the best-known American Color Field painters, although in the 1950s he was thought of as an abstract expressionist and in the early 1960s he was thought of as a minimalist painter. Noland helped establish the Washington Color School movement.

<https://www.sothebys.com/en/videos/kenneth-noland-morris-louis-and-the-magnetism-of-the-color-field-movement>

<https://www.youtube.com/watch?v=YPnLv409gE0> (no words—current exhibit in LA)













Sam Francis (1923-1994)

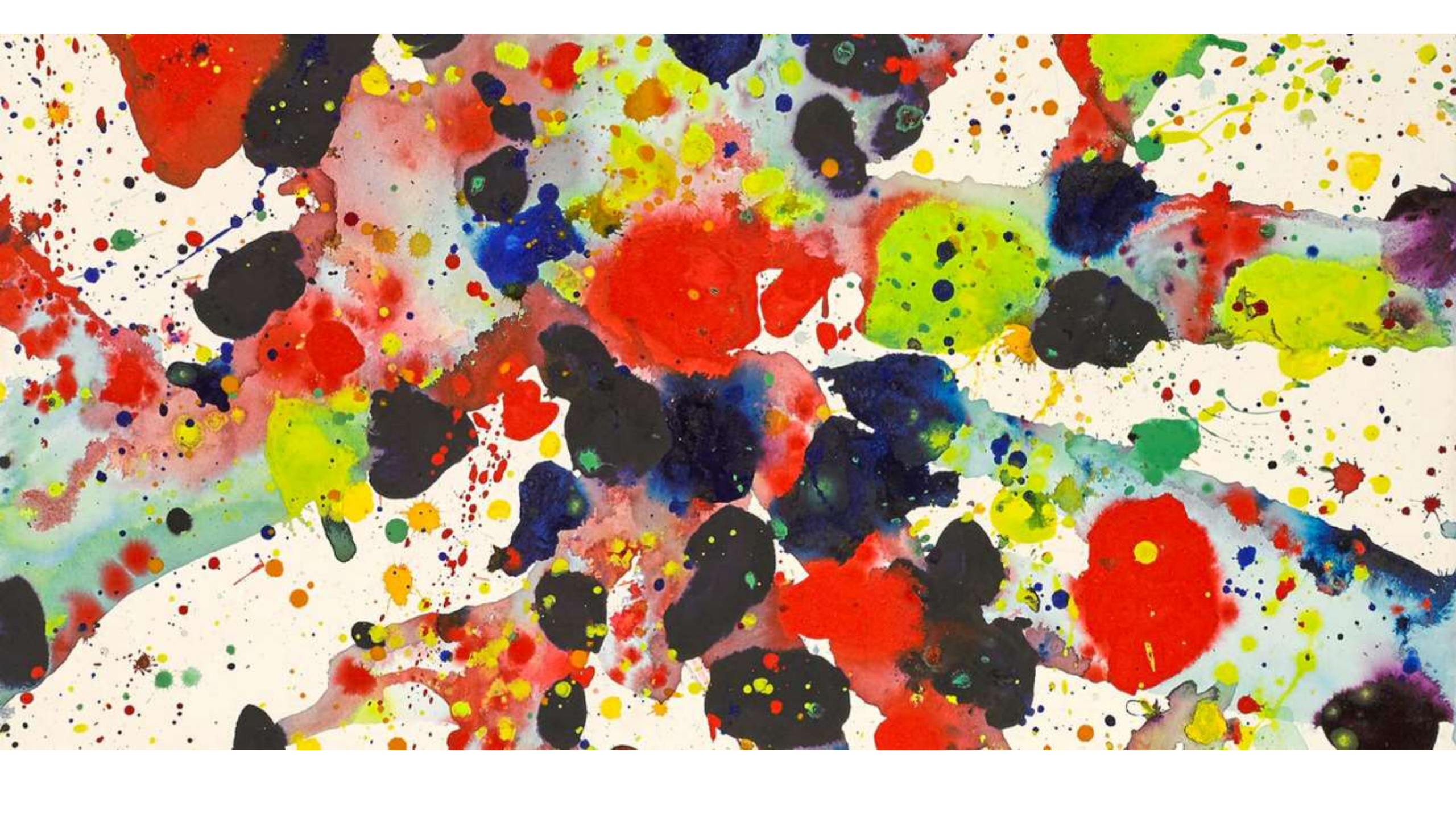
Sam Francis was one of the 20th century's most celebrated artists, and the American painter who brought the vocabulary of abstract expressionism to Paris. Drawing on exclusive interviews and private correspondence, Gabrielle Selz traces the extraordinary life of this complex and charismatic artist who first learned to paint as a former air-corps pilot encased for three years in a full-body cast.

- <https://www.sothebys.com/en/videos/the-year-sam-francis-reached-a-critical-creative-breakthrough>

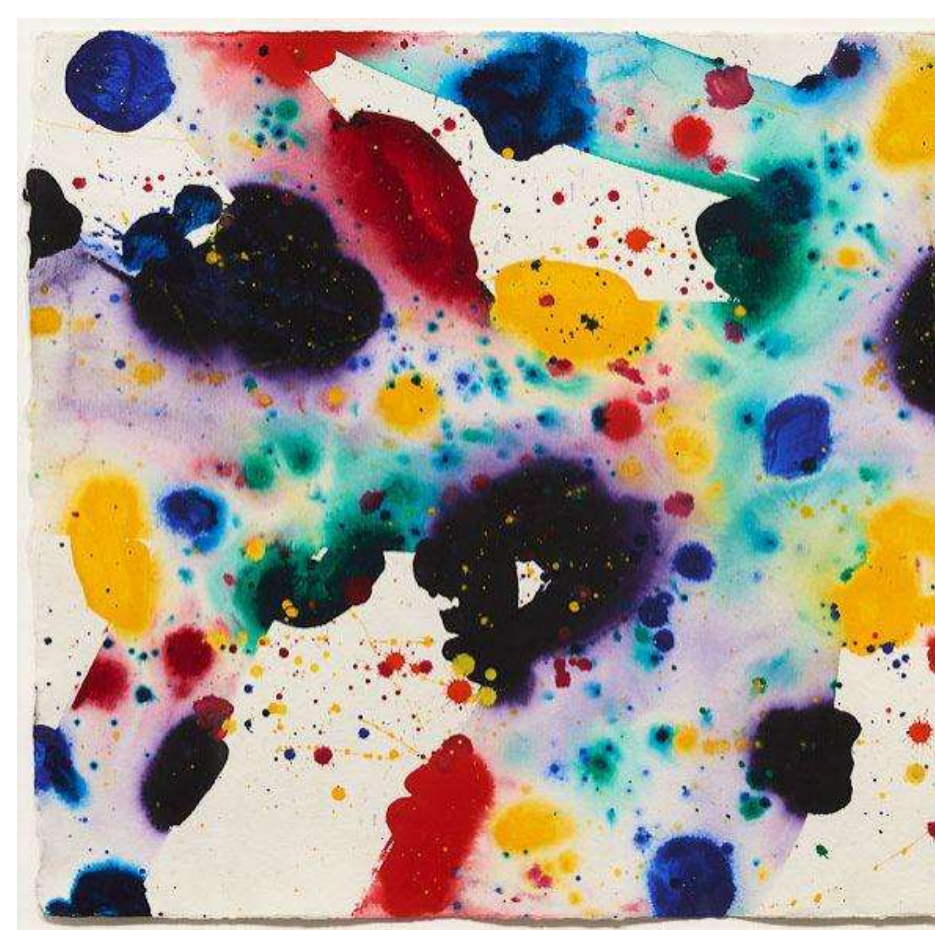




SAM FRANCIS NORTON SIMON MUSEUM







Remembering the Women

- <https://www.youtube.com/watch?v=p7tlfBOjay0>
- <https://www.youtube.com/watch?v=n8yLH4viZaM> (13 mins)

Mary Abbot (1921-2019)

Mary Lee Abbott was an American artist, known as a member of the New York School of abstract expressionists in the late 1940s and 1950s. Her abstract and figurative work were also influenced by her time spent in Saint Croix and Haiti, where she lived off and on throughout the 1950s.

<https://www.denverartmuseum.org/en/blog/women-abstract-expressionism-artist-mary-abbott>













Hedda Stern (1910-2011)

Hedda Sterne was a Romanian-born American artist who was an active member of the New York School of painters. Her work is often associated with Abstract Expressionism and Surrealism.







Judith Godwin (1930-2021)

Judith Godwin was an American abstract painter, associated with the Abstract Expressionist movement.

When the artist died on May 29 in her ninety-second year, the art world lost the last living member of a generation of women Abstract Expressionists, a group of artists largely overlooked in favor of their male peers.

<https://www.youtube.com/watch?v=jDvFn1JQcuE>











Joan Mitchell (1925-1992)

Joan Mitchell was an American painter and printmaker who also worked in pastel and made other works on paper. She was an active participant in the 1950s in the New York School of artists.

<https://www.joanmitchellfoundation.org/joan-mitchell/citations/joan-mitchell-portrait-of-an-abstract-painter> (interview--4 mins)

<https://www.sfmoma.org/exhibition/joan-mitchell/> (6 mins)









Perle Fine (1905-1988)

Perle Fine was an American Abstract expressionist painter. Fine was most known by her combination of fluid and brushy rendering of the materials and her use of biomorphic forms encased and intertwined with irregular geometric shapes.

<https://www.youtube.com/watch?v=yqUORQW8IHQ> (7 mins good)









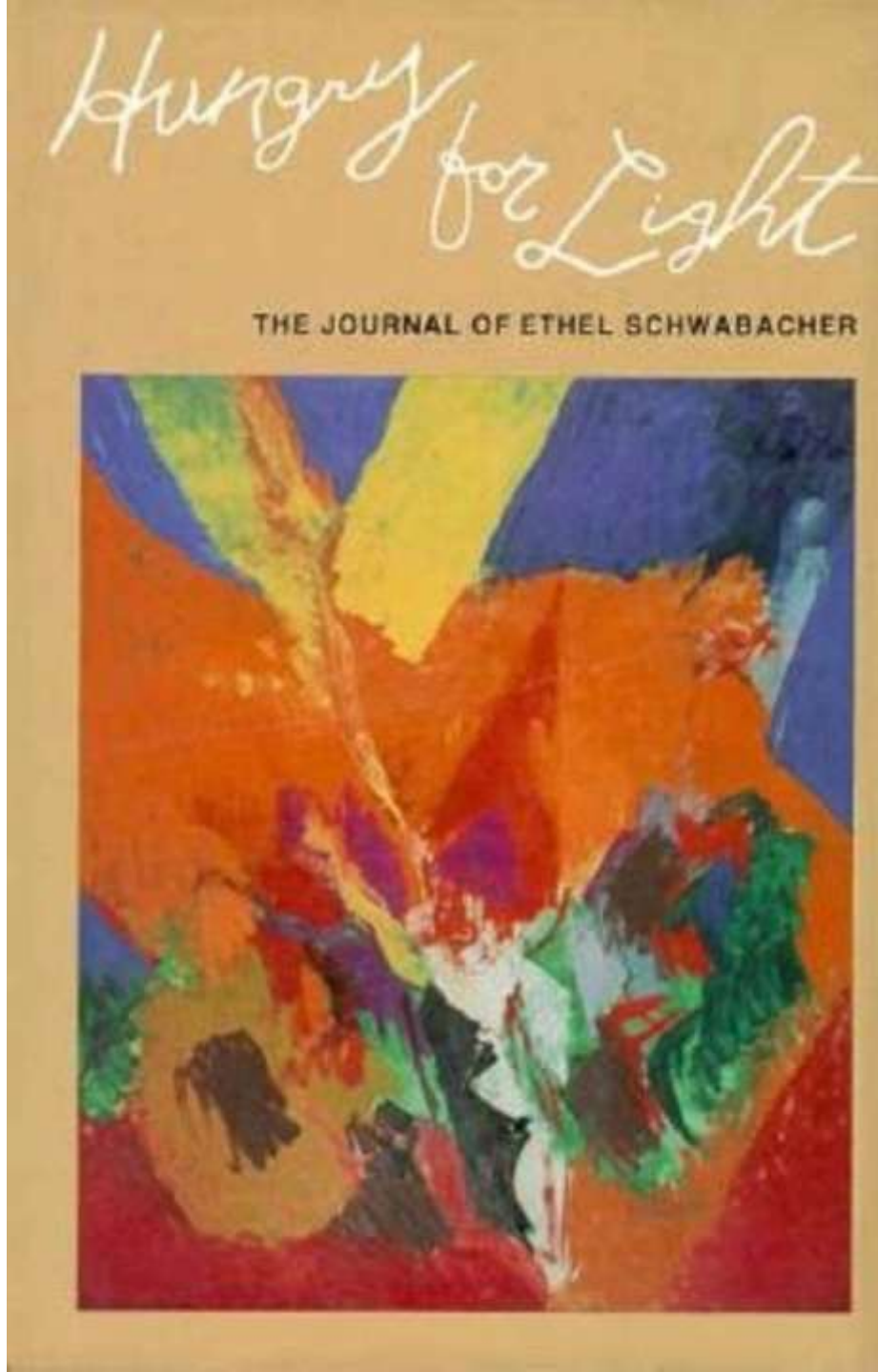
Ethel Schwabacker (1903-1984)

Ethel Kremer Schwabacher was an abstract expressionist painter, represented by the Betty Parsons Gallery in the 1950s and 1960s.











Deborah Remington (1930-2010)

Deborah Remington was an American abstract painter. Her most notable work is characterized as Hard-edge painting abstraction. She became a part of the San Francisco Bay Area's Beat scene in the 1950s. In 1965, she moved to New York where her style solidified and her career grew substantially.

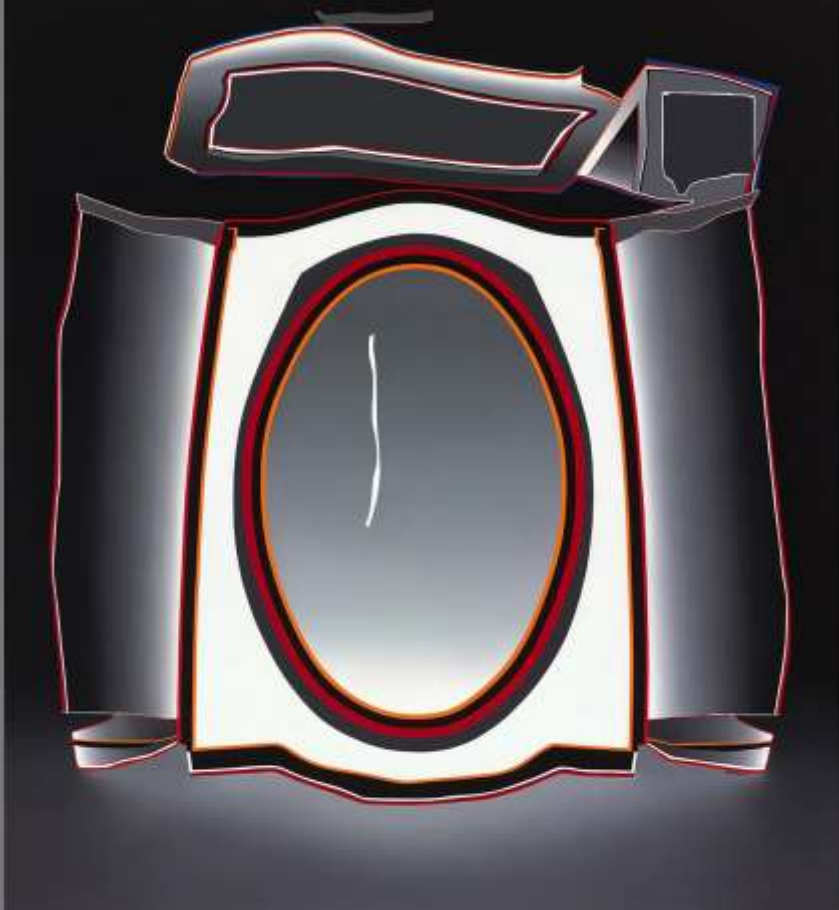
<https://www.youtube.com/watch?v=RsdYlr12yYg>

https://www.youtube.com/watch?v=YR_Wx-se9Bw

<https://www.youtube.com/watch?v=xklcnqOKOVQ>
(11 mins)



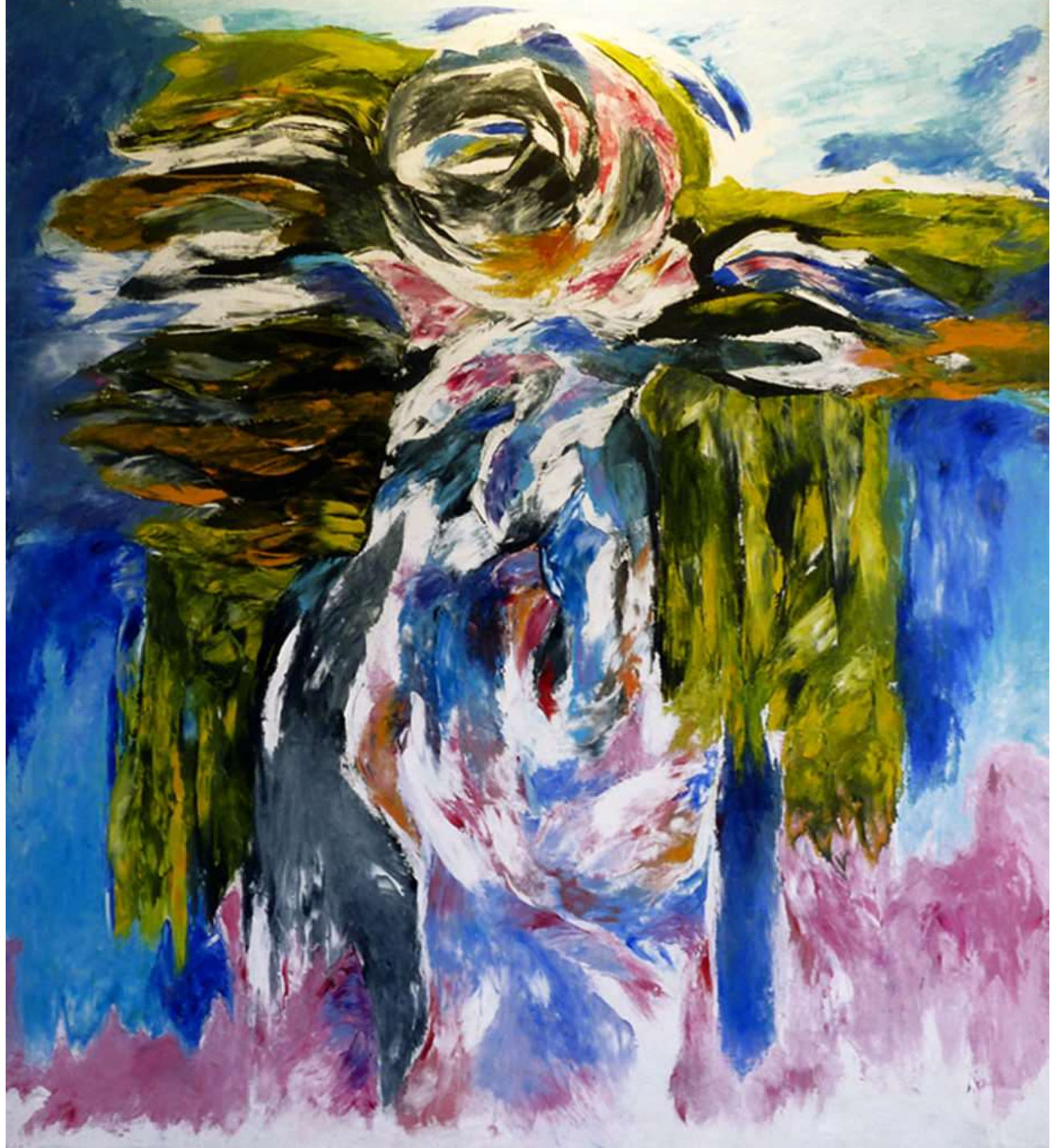




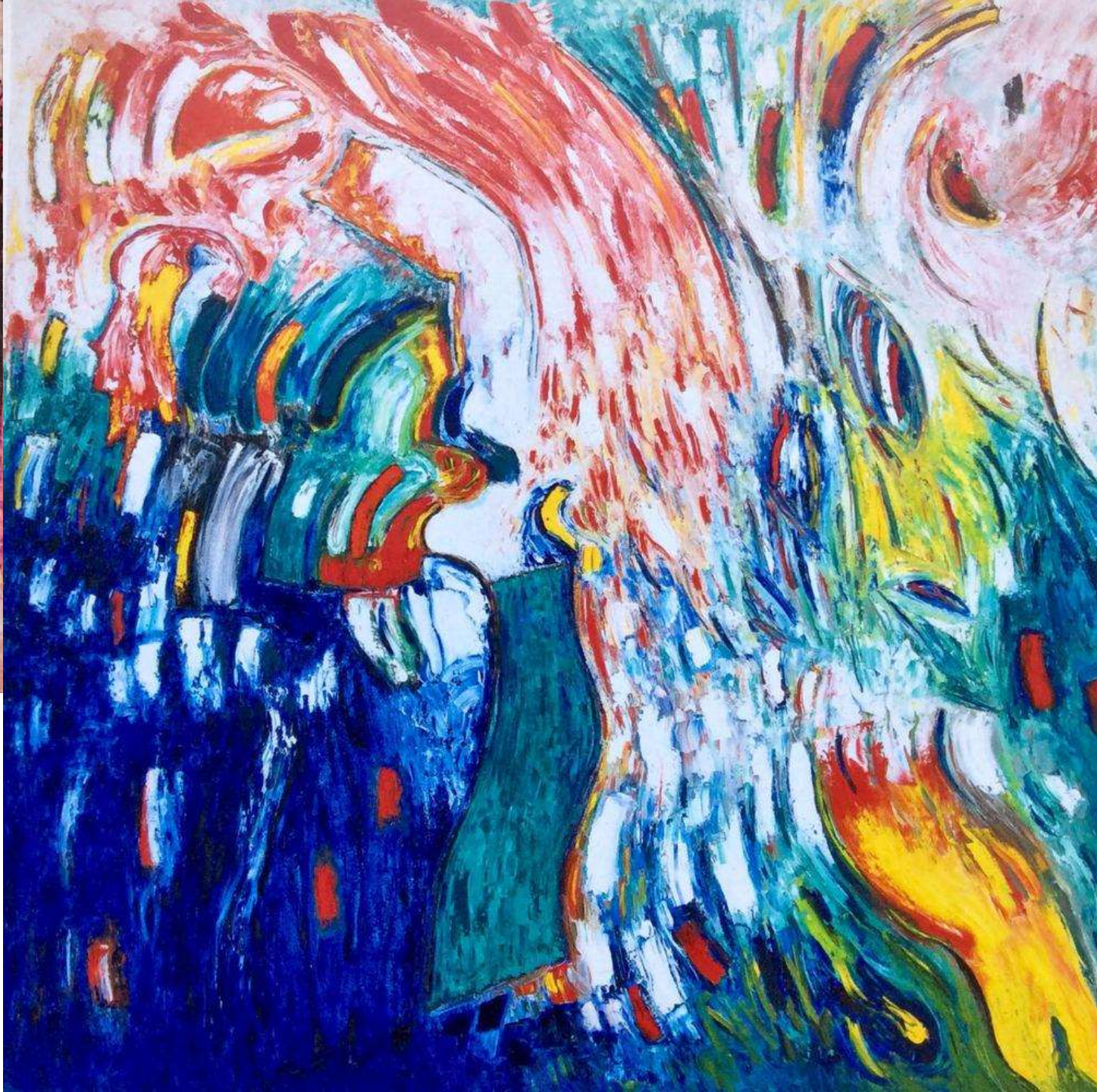
Sonia Gechtoff (1926-2018)

Sonia Gechtoff was an American abstract expressionist painter. Her primary medium was painting but she also created drawings and prints.









Grace Hartigan (1922-2008)

Grace Hartigan was an American Abstract Expressionist painter and a significant member of the vibrant New York School of the 1950s and 1960s.

Grace Hartigan grew up in New Jersey, where she married the boy next door after graduating from high school. They ended up penniless in Los Angeles, however, and Hartigan returned to the East Coast pregnant and alone. In 1948 she was mesmerized and fascinated by a Jackson Pollock exhibition and lived briefly on Long Island with the artist and his wife. She worked odd jobs in New York through the 1950s to pay for paint. In 1959, Hartigan married Dr. Winston Price and moved with him to Baltimore, where she worked in a large studio in Fells Point for decades. (Mattison, Grace Hartigan: A Painters World, 1990).

<https://www.youtube.com/watch?v=e-mzSLQL1nk>

<https://www.youtube.com/watch?v=cSVSH-d1994>













Etel Adnan (1925-2020)

Etel Adnan is a Lebanese-American poet, essayist, and visual artist. In 2003, Adnan was named "arguably the most celebrated and accomplished Arab American author writing today" by the academic journal MELUS: Multi-Ethnic Literature of the United States.

The poet, novelist, journalist, and artist **Etel Adnan** grew up speaking Arabic and Greek at home, and was educated in French and English. She began to paint in the late 1950s, while working as a professor of philosophy in Northern California. It was a period when, in protest of France's colonial rule in Algeria, she renounced writing in French and declared that she would begin "painting in Arabic"—making luminous abstractions of the view of Mt. Tamalpais from her home in Sausalito, Ca.

While Adnan's writings have been unflinching in their critique of war and social injustice, her visual art is an intensely personal distillation of her faith in the human spirit and the beauty of the natural world. She has stated, "It seems to me I write what I see, paint what I am." Adnan creates her paintings decisively and intuitively. Despite their modest scale and formal economy, her paintings and drawings are potent visualizations of the sensations of memory and momentary perception that shape our inner lives.

<https://www.youtube.com/watch?v=icscN89WBGc>

<https://www.youtube.com/watch?v=ajPqxeaDjVY>

<https://www.galerieelong.com/exhibitions/etel-adnan5/selected-works?view=slider>











6/35

E. Adrian 17

Rosemary Mayer (1943-2014)

Rosemary Mayer, was an American visual artist who was closely associated with the feminist art movement and the conceptual art movement of the 1970s. She was a founding member of A.I.R. gallery, the first all-female artists cooperative gallery in the United States

The first institutional survey exhibition of American artist Rosemary Mayer provides an overview of the artist's work, moving from early conceptual experiments of the late 1960s through to textile sculptures and drawings made in the early 1970s, before focusing on propositional and durational performances and temporary monuments made from 1977-1982. Highlighting Mayer's formal interest in draping, knotting and tethering, the exhibition focuses on the artist's process of constructing real and imagined networks and constellations, in which friends and historical figures feature in expressions of affinity and attachment.











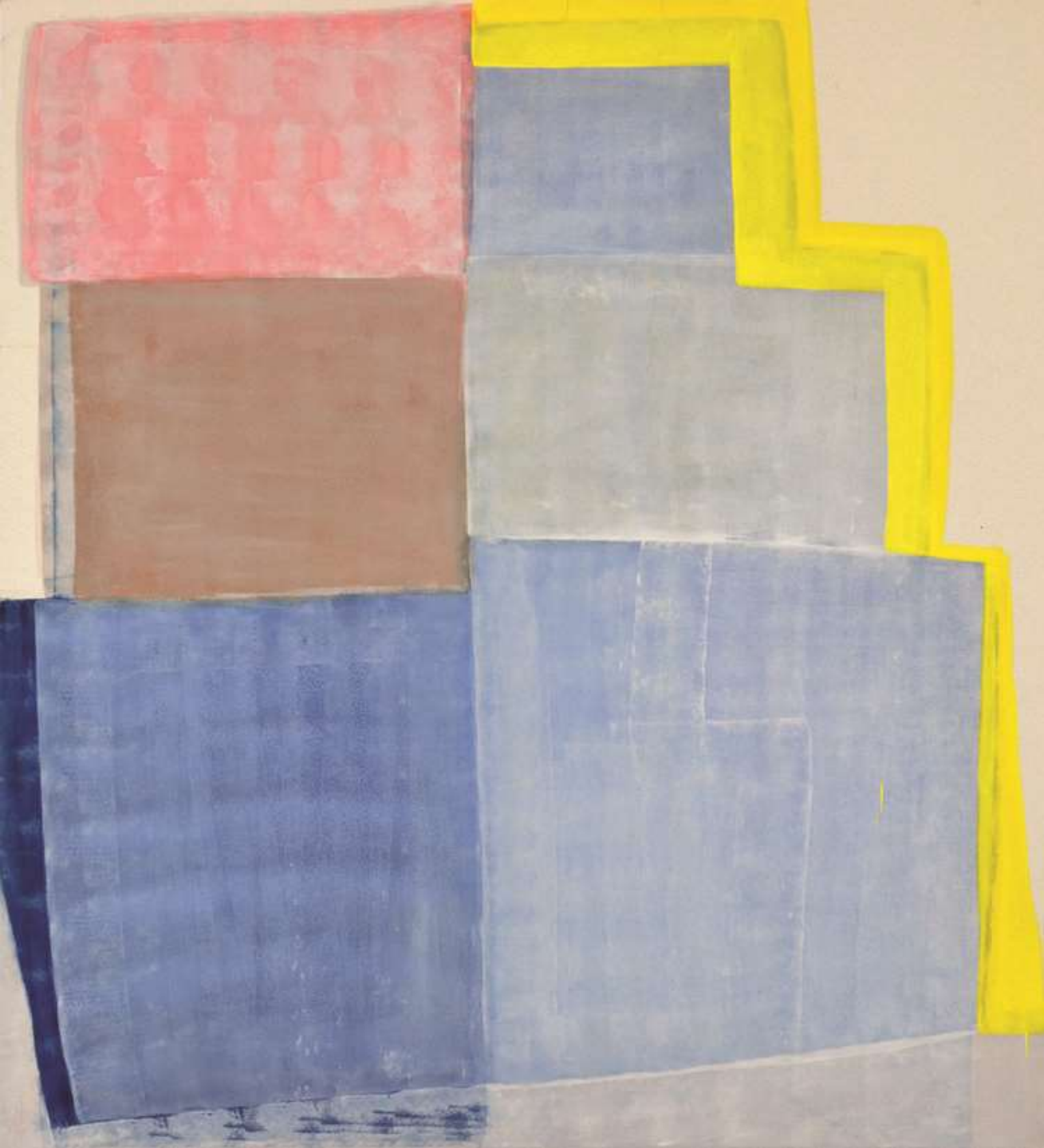


Anna Kunz

Anna Kunz is based in Chicago, IL where she makes works on paper, paintings, sculptures, installations, and projects that seep out of the rectangle, often using painted and dyed fabrics that function like nets to capture and manipulate light and color. Her experiential works are often combined with objects or surfaces that add complexity and invite viewers to structure the space in time by passing through them. Kunz's work has been included in numerous national and international collections. She has had exhibitions in San Francisco, Los Angeles, Dallas, New York, Madrid, and Poland.

- <https://www.youtube.com/watch?v=I21oxaEZPs4>
- <https://www.youtube.com/watch?v=cCKKfAYEhPM>





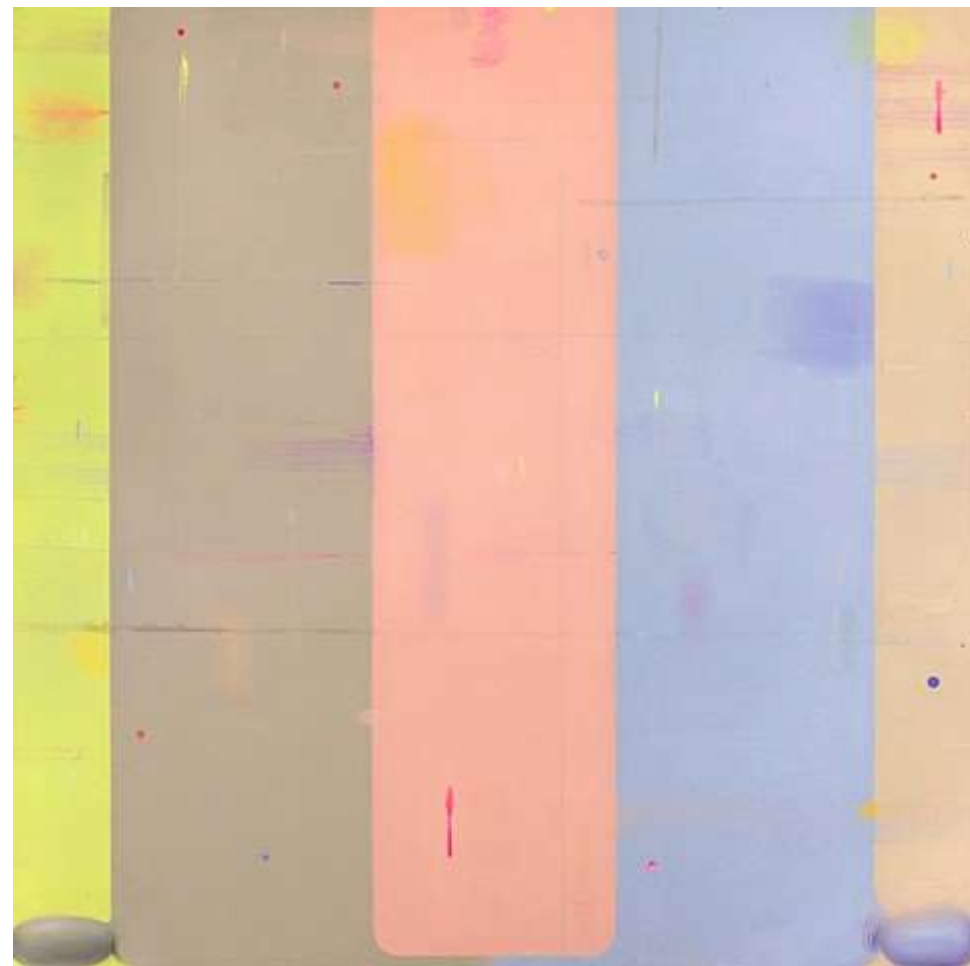


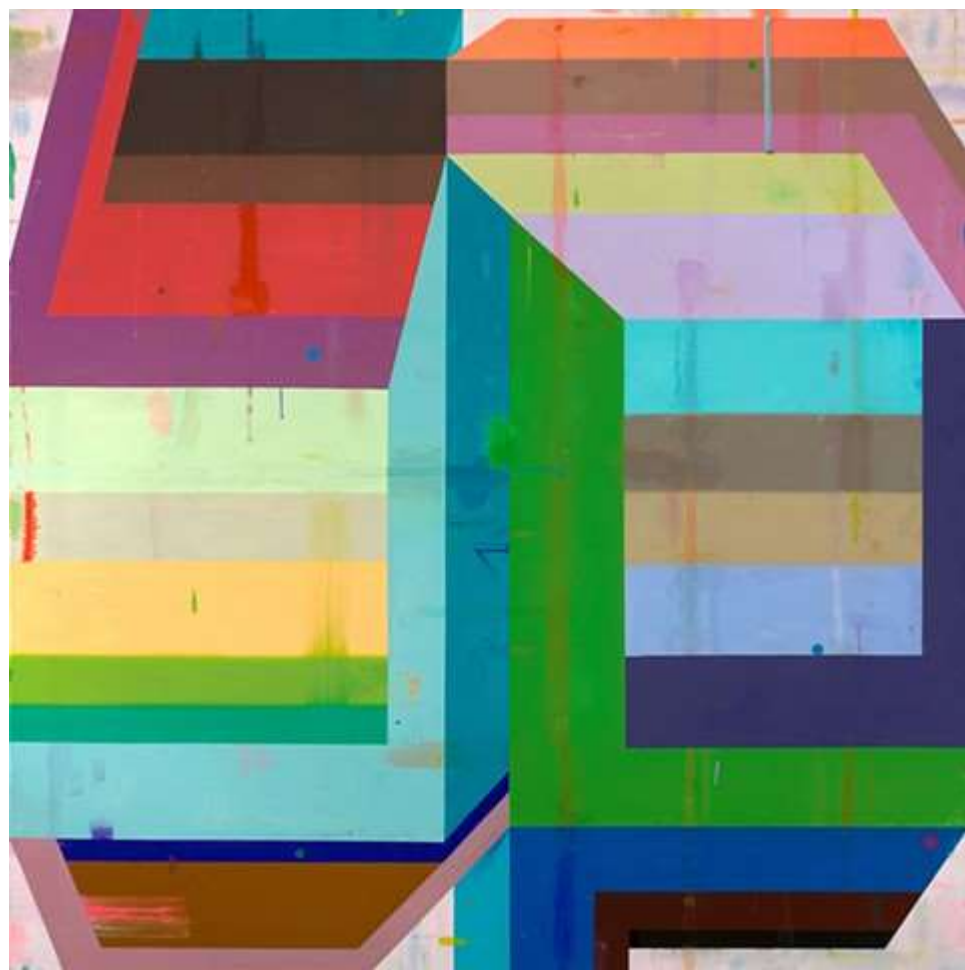
Deborah Zlotsky

Deborah Zlotsky is represented by Kathryn Markel Fine Arts in New York and Robischon Gallery in Denver. She received a 2019 Guggenheim Fellowship and NYFA Artist Fellowships in Painting in 2012 and 2018. Zlotsky's work is in a variety of public, private and corporate collections in the US and abroad, and she has been awarded recent residencies at MacDowell, Yaddo, the Bogliasco Foundation, and the Bemis Center. Zlotsky has a BA in art history from Yale University and an MFA in painting and drawing from the University of Connecticut. She teaches at the Rhode Island School of Design and lives in the Hudson Valley.

- <https://vimeo.com/134971963>





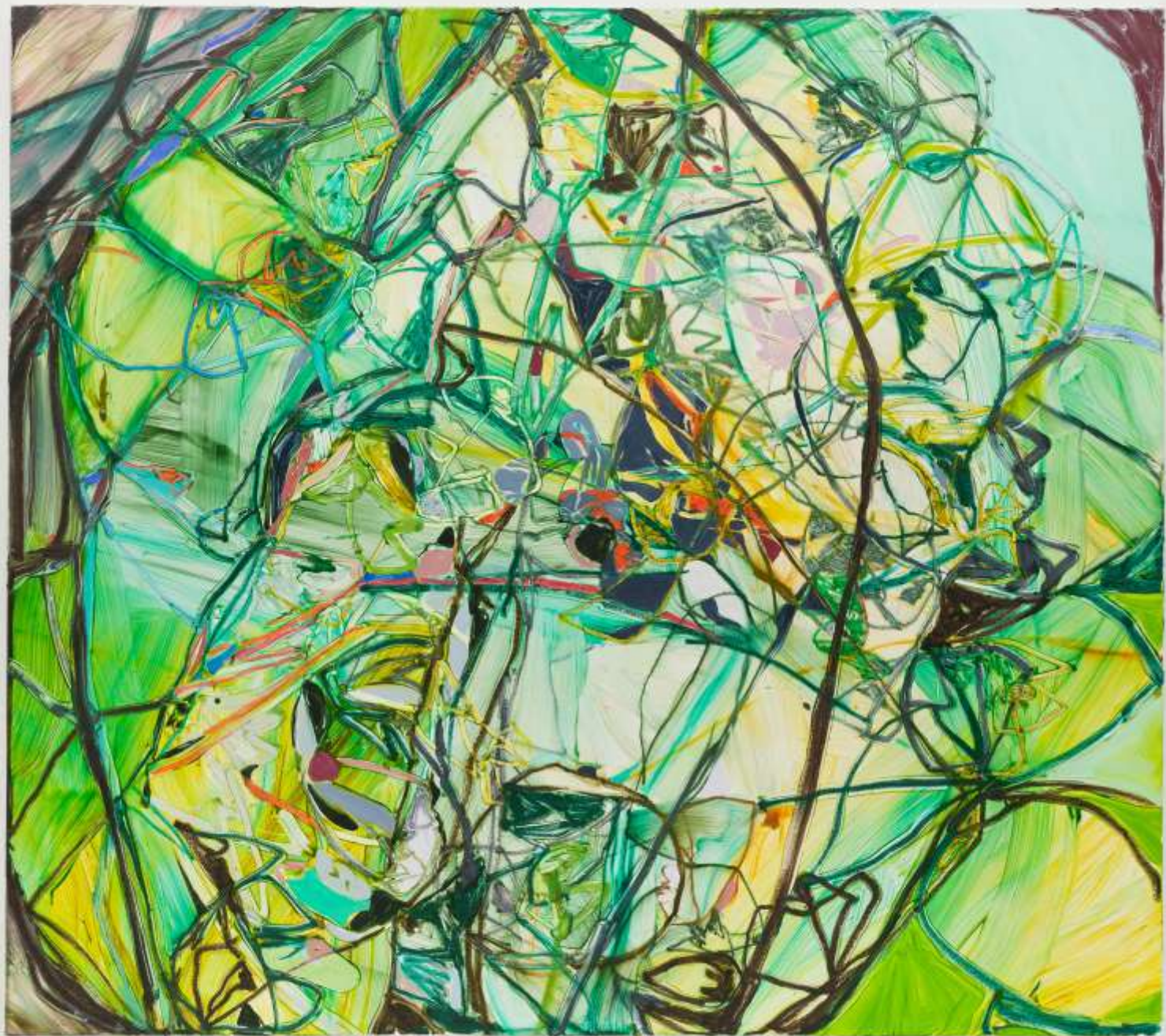


Jadé Fadojutimi

Jadé Fadojutimi's [‘A Muddled Mind That’s Never Confined’](#) is a wonderfully poetic and mysteriously abstract piece that is just one of the highlights of Sotheby’s upcoming [Contemporary Art Day Sale](#) (8-15 October 2021). In this latest Sotheby’s video, Contemporary Art specialist Witt Kegel describes how Fadojutimi takes inspiration from music, fashion and anime to create an image with both sweeping and intricate brushstrokes. Discover how it is both an eruption of colour and a visual representation of her response to the world around her. Click [here](#) to watch more Sotheby’s videos.

- <https://www.sothebys.com/en/videos/an-eruption-of-colour-jade-fadojutimis-a-muddled-mind-thats-never-confined>









Assignment Suggestions...

- Create a fabric “sculpture” and draw, paint, or photograph it
- Play with transparency