

# Artists of Color

African American Color Field Painters

# Color Field Painting Overview

Color field painting is a style of abstract painting that emerged in New York City during the 1940s and 1950s. It was inspired by European modernism and closely related to abstract expressionism, while many of its notable early proponents were among the pioneering abstract expressionists.

- [https://www.youtube.com/watch?v=7-Q5eQm\\_mog](https://www.youtube.com/watch?v=7-Q5eQm_mog)

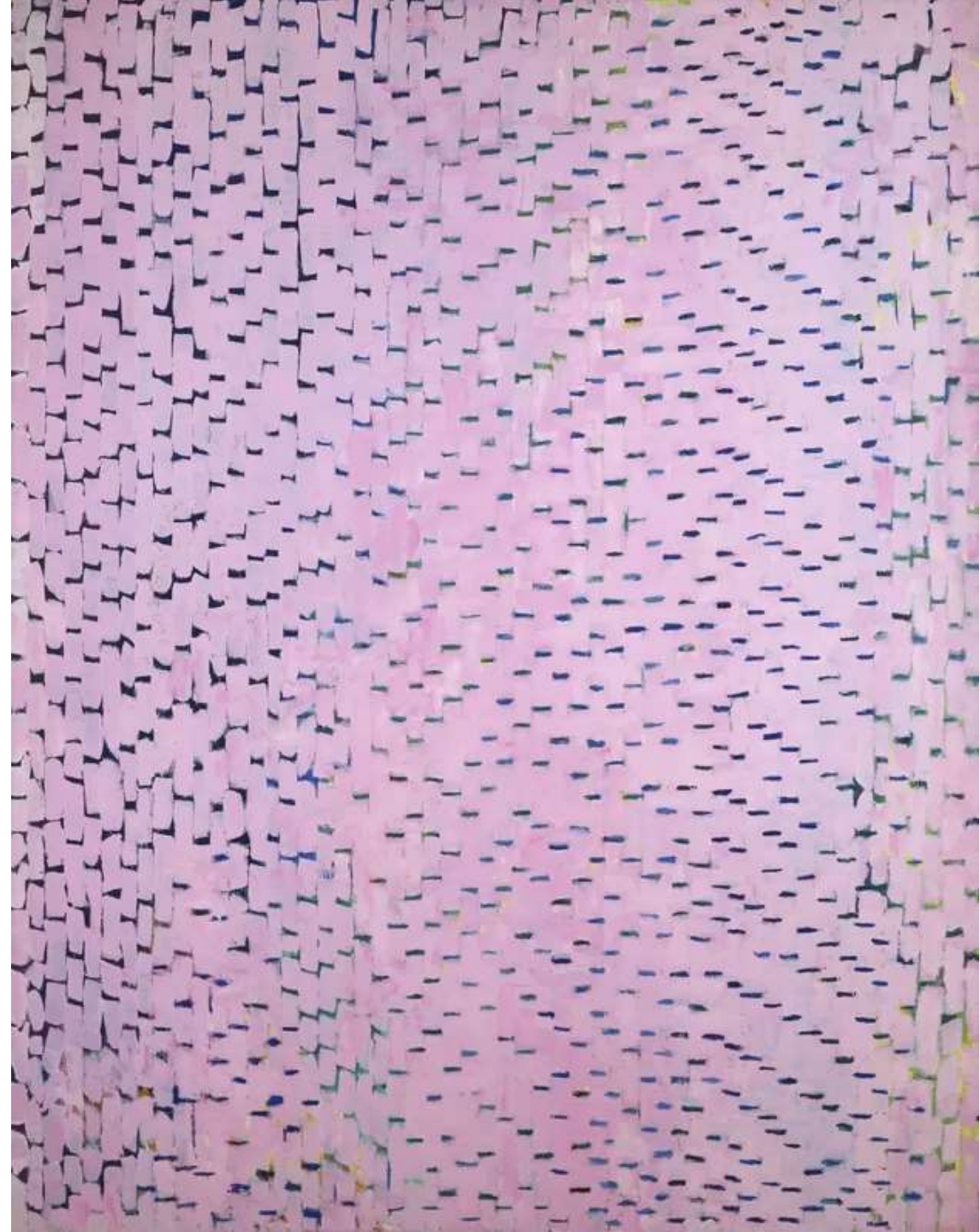
# Alma Woodsey Thomas (1891-1978)

Alma Woodsey Thomas was an African-American artist and teacher who lived and worked in Washington, D.C., and is now recognized as a major American painter of the 20th century.

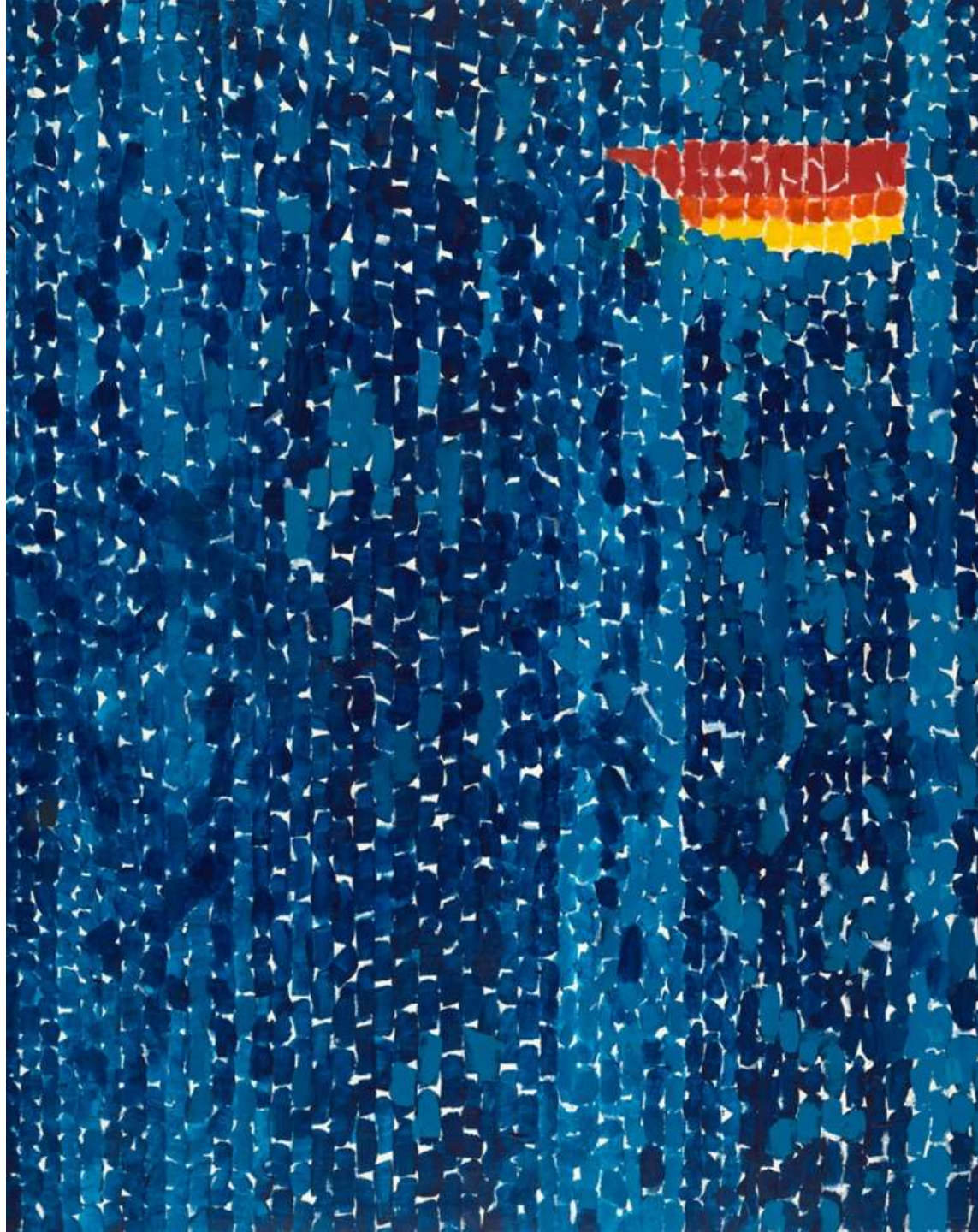
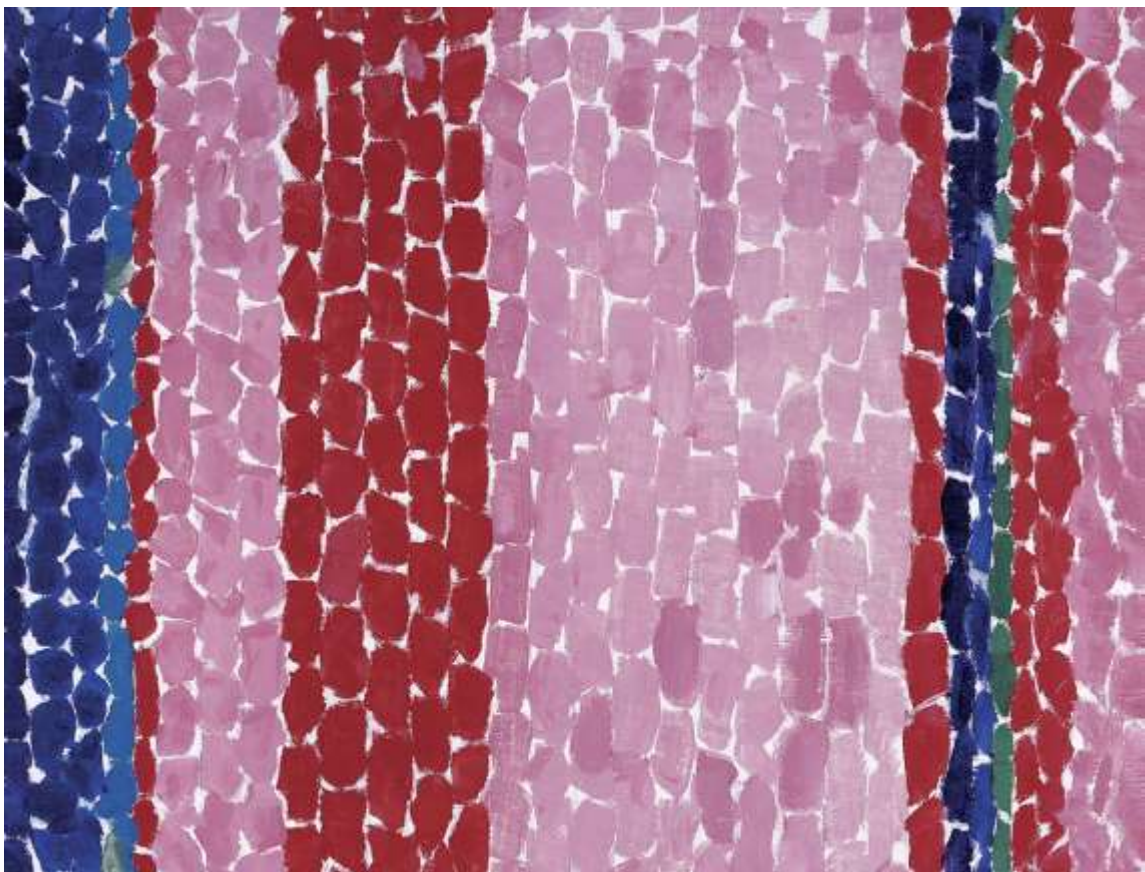
<https://www.youtube.com/watch?v=pzgT9zEWhml>



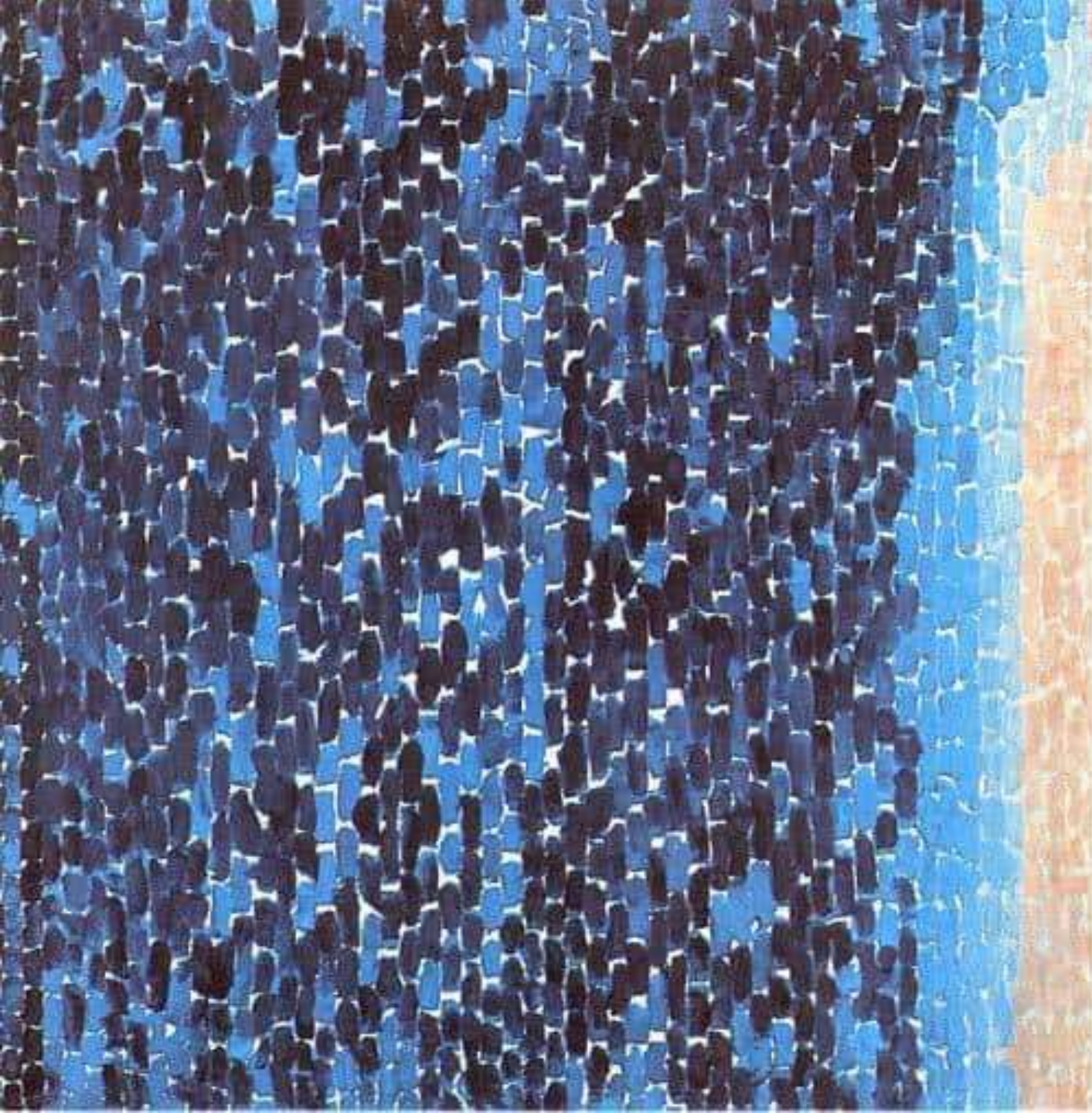








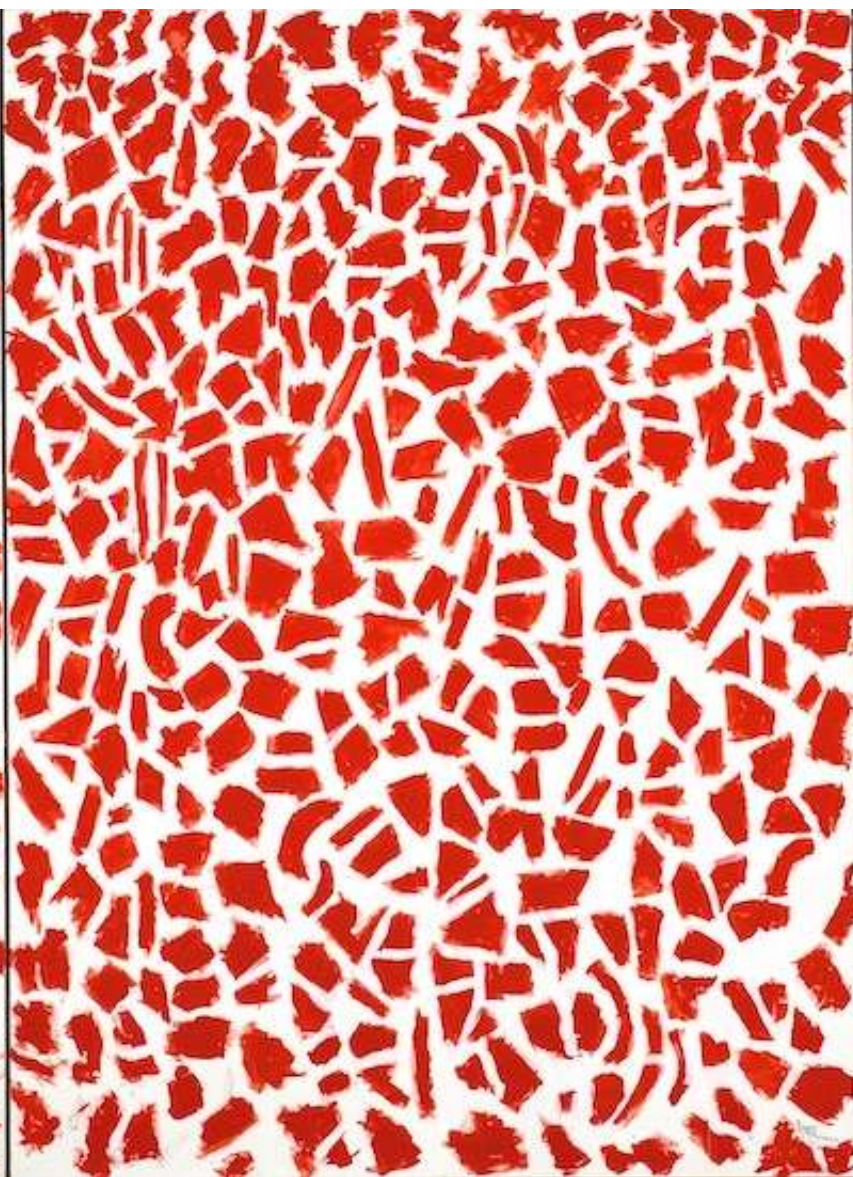


















# Norman Lewis (1909-1979)

Norman Wilfred Lewis was an American painter, scholar, and teacher. Lewis, who was African-American and of Bermudian descent, was associated with abstract expressionism, and used representational strategies to focus on black urban life and his community's struggles.

- [https://www.youtube.com/watch?v=IVJi\\_mbfMIM](https://www.youtube.com/watch?v=IVJi_mbfMIM)

























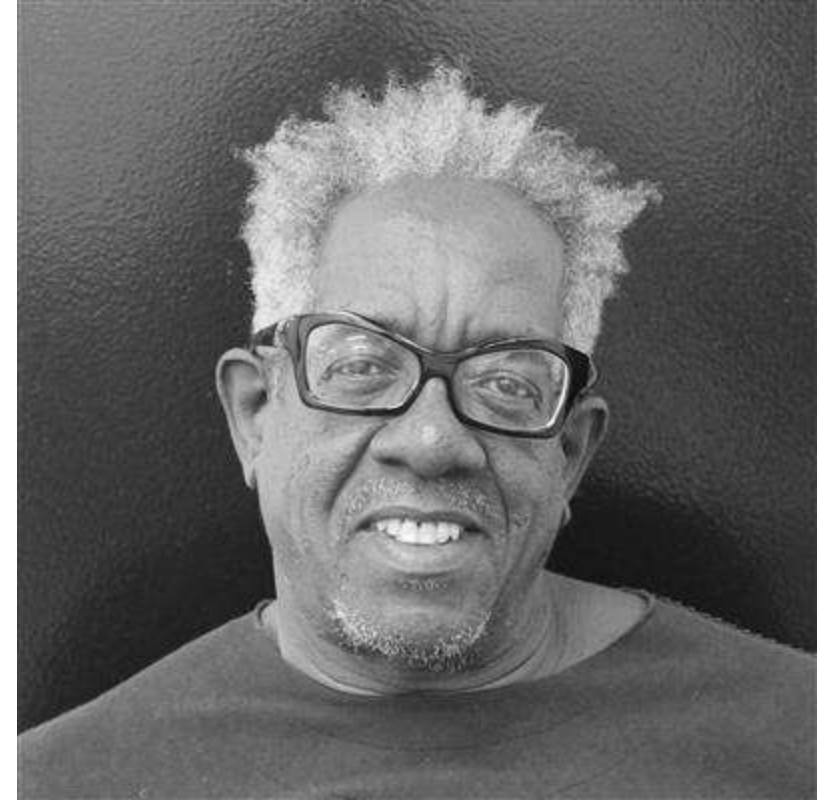




# Stanley Whitney

Stanley Whitney was **born in Philadelphia in 1946 and lives and works in New York City and Eastern Long Island, New York.** He holds a BFA from Kansas City Art Institute as well as an MFA from Yale University and is currently Professor emeritus of painting and drawing at Tyler School of Art, Temple University.

- <https://www.youtube.com/watch?v=MpapjlTPmJE>
- <https://www.lissongallery.com/exhibitions/stanley-whitney-283b7dbc-4c25-4d3b-b4ce-5cf0bc902028>





















# Frank Bowling

Sir Richard Sheridan Franklin Bowling OBE RA, known as Frank Bowling, is a Guyana-born British artist. His paintings relate to Abstract expressionism, Color Field painting, and Lyrical Abstraction.

<https://www.tate.org.uk/whats-on/tate-britain/frank-bowling>

<https://www.tate.org.uk/art/artists/frank-bowling-792/how-paint-bowling>











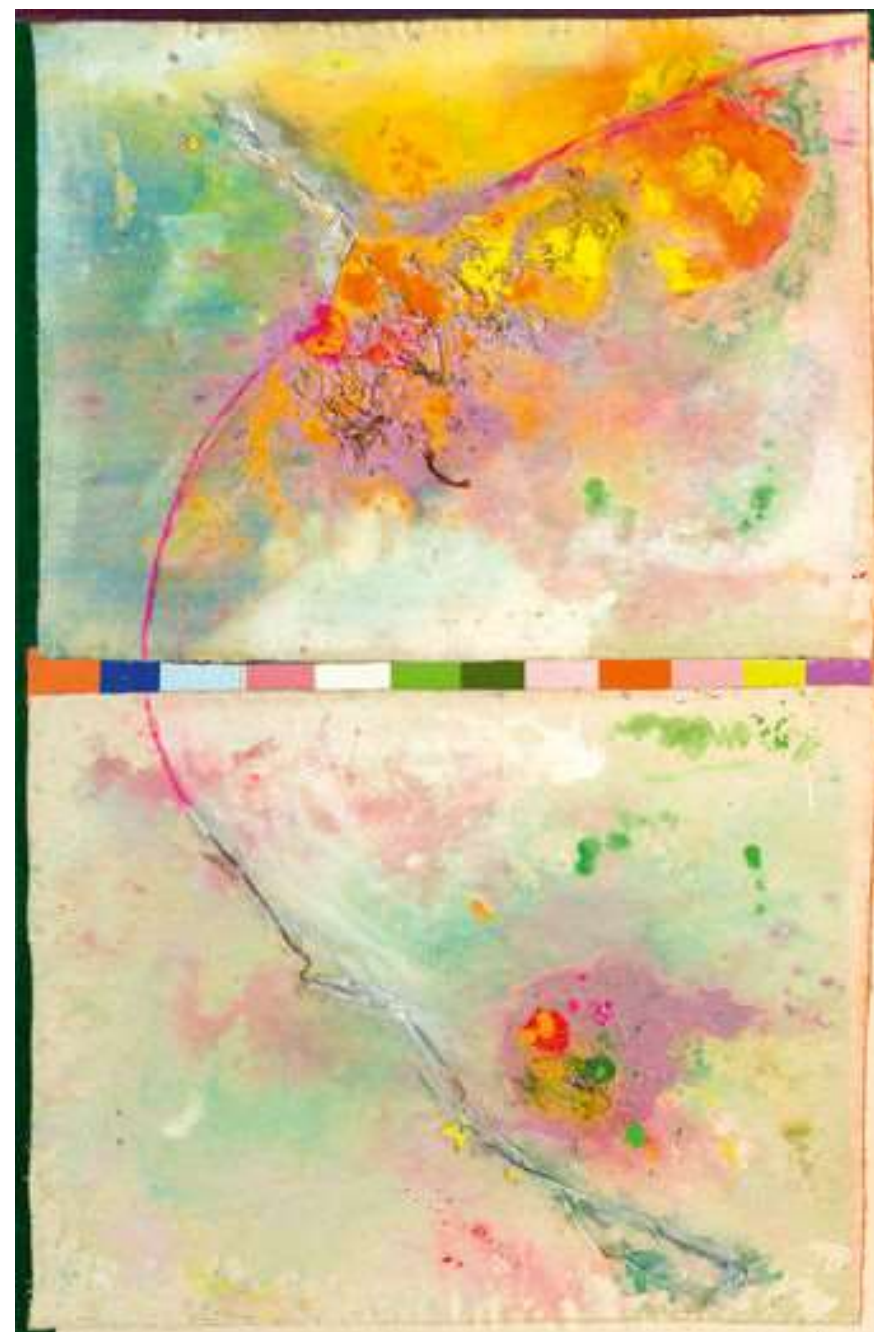


















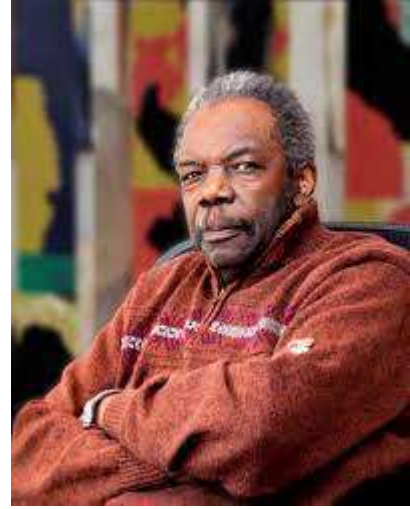
# Sam Gilliam

Sam Gilliam is an African-American color field painter and lyrical abstractionist artist. Gilliam is associated with the Washington Color School, a group of Washington, D.C. area artists that developed a form of abstract art from color field painting in the 1950s and 1960s.

<https://americanart.si.edu/artist/sam-gilliam-1811>

<https://www.pacegallery.com/exhibitions/sam-gilliam/>

- <https://www.pacegallery.com/exhibitions/sam-gilliam-2/>
- <https://www.pacegallery.com/exhibitions/epistrophy/> (3 artists)



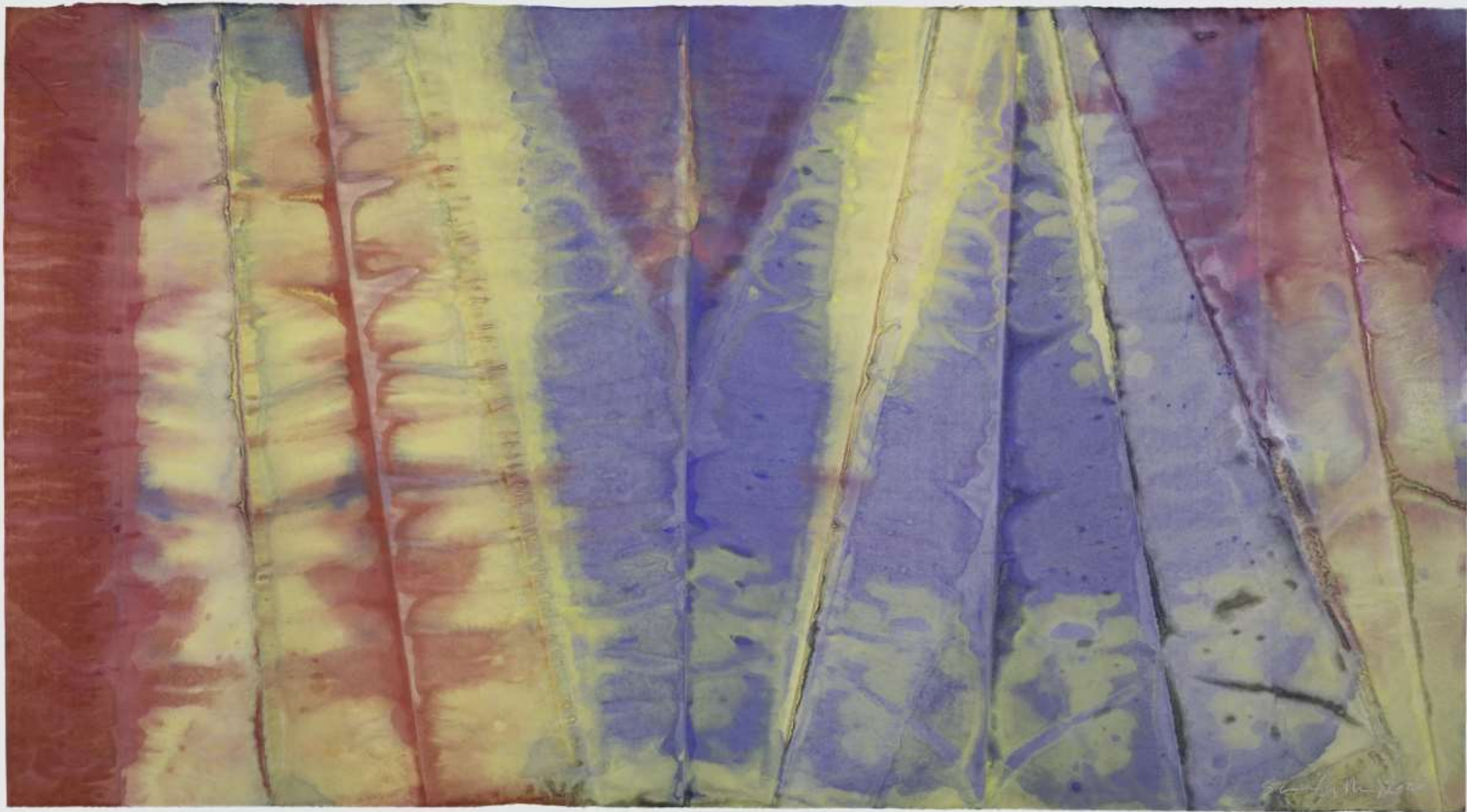






























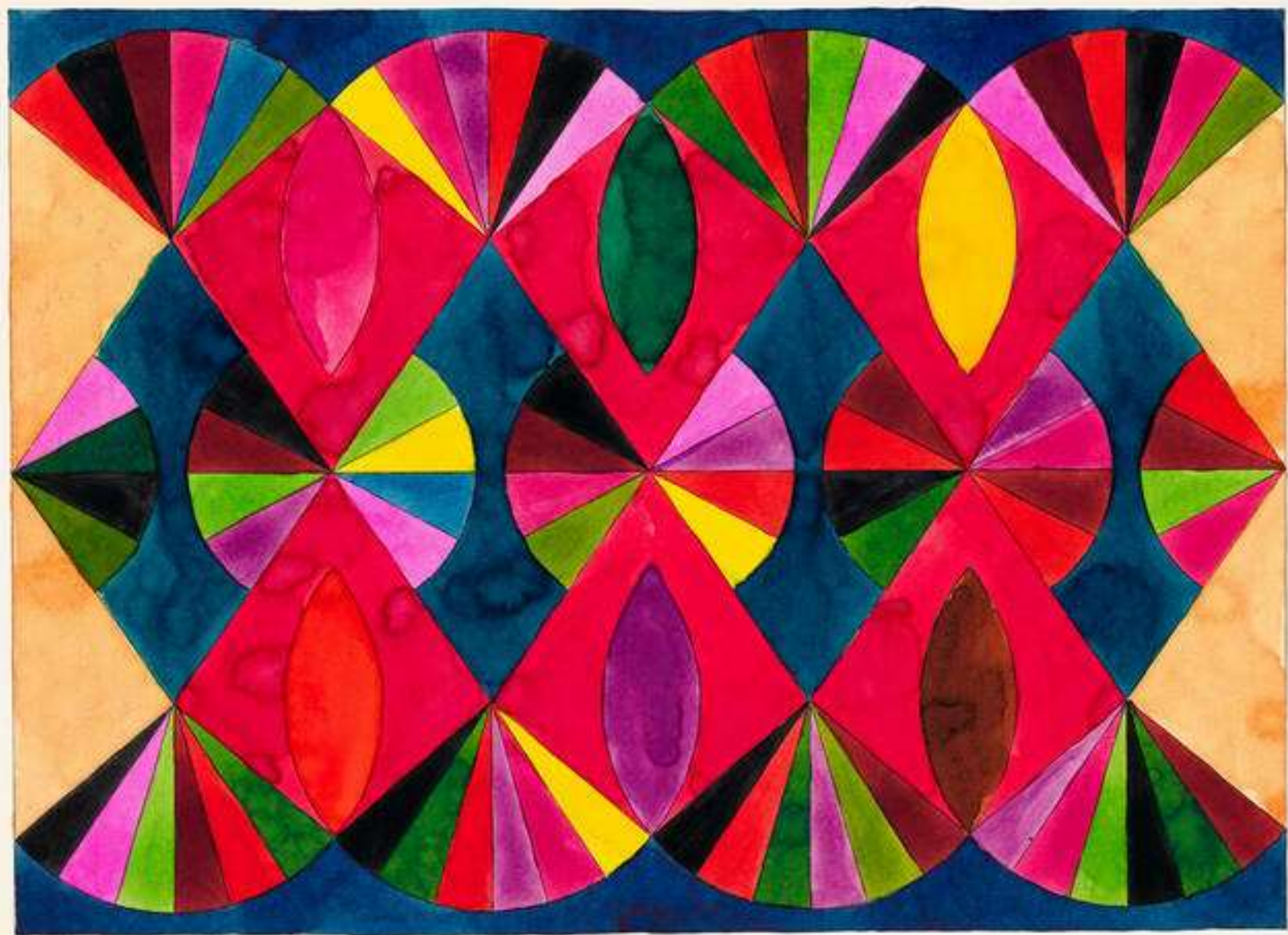
# William T. Williams

William T. Williams is an American painter and educator. He is known for his process-based approach to painting that engages motifs drawn from personal memory and cultural narrative to create non-referential, abstract compositions.

[https://www.youtube.com/watch?v=Elgwz8R\\_2ks](https://www.youtube.com/watch?v=Elgwz8R_2ks)











1974















# MARY LOVELACE O'NEAL

Mary Lovelace O'Neal is an American artist and arts educator. Her work is focused on abstracted mixed-media and minimalism. She is a Professor Emeritus, University of California, Berkeley and retired from teaching in 2006.

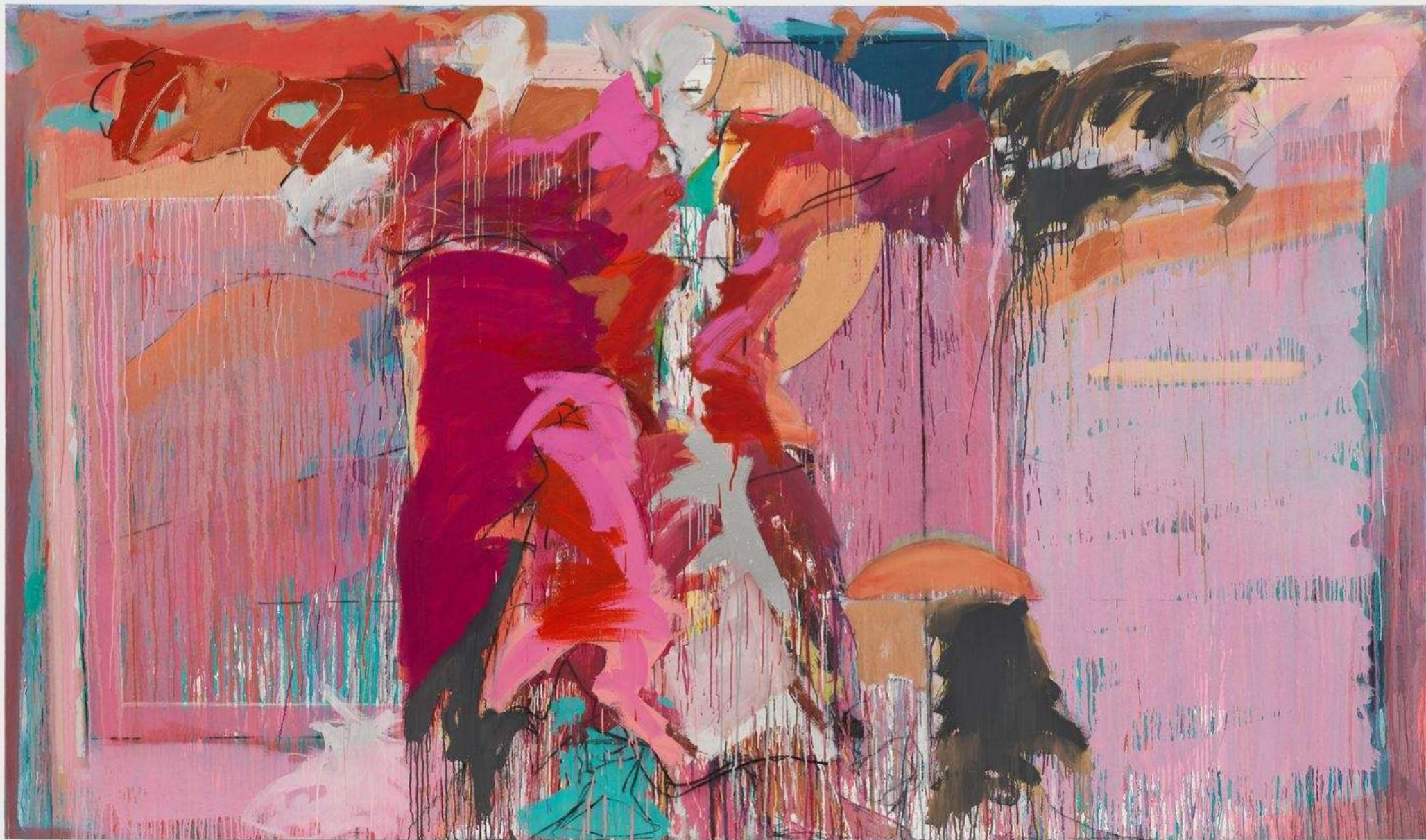
<https://nmwa.org/blog/artist-spotlight/spotlight-mary-lovelace-oneal/>







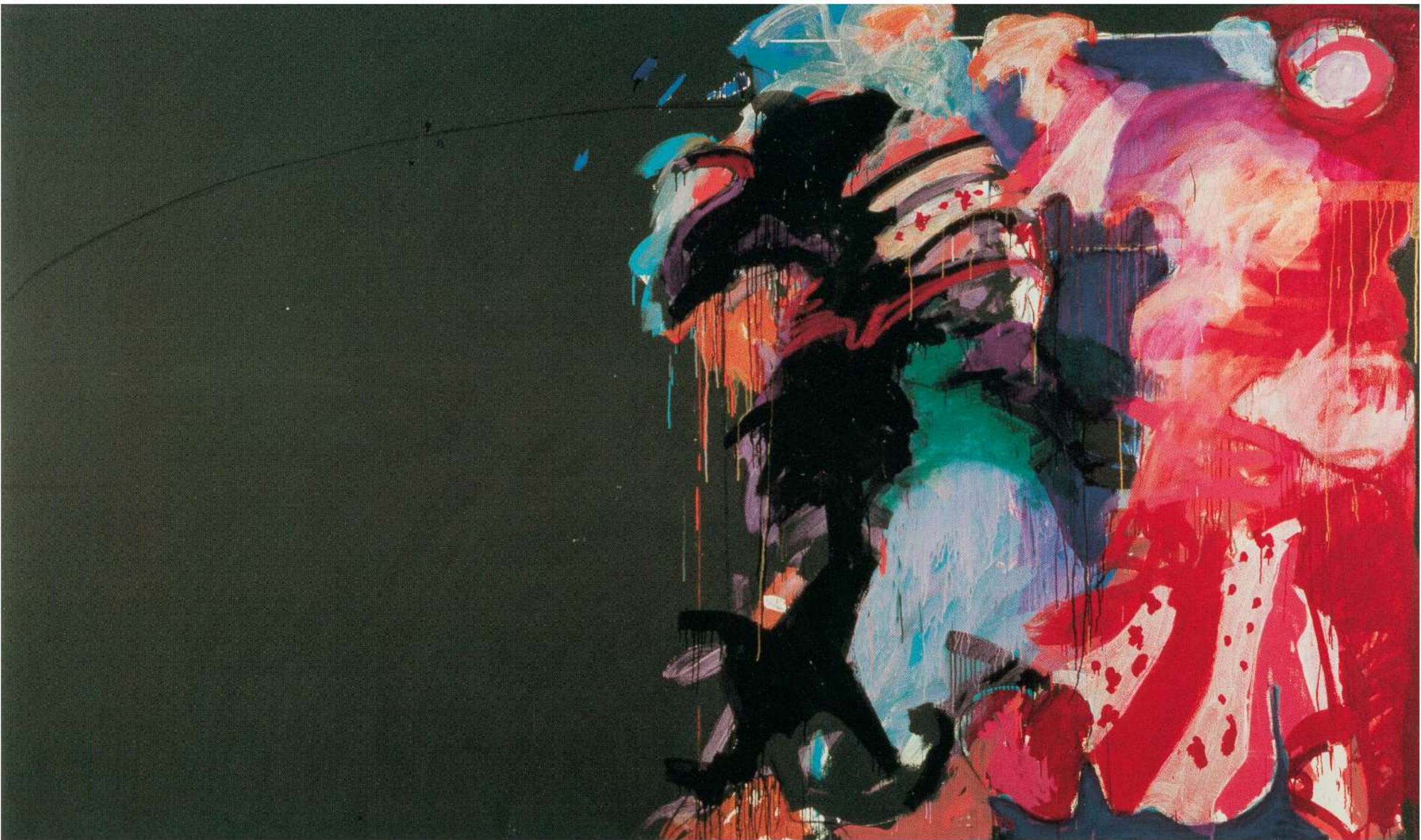


















# Shinique Smith

Shinique Smith is an American visual artist, known for her colorful installation art and paintings that incorporate found textiles and collage materials. She is based in Brooklyn, New York.

<https://www.shiniquesmith.com/about>

<https://www.youtube.com/watch?v=3lQpIU8qLiY> (4mins)

<https://vimeo.com/645661043>











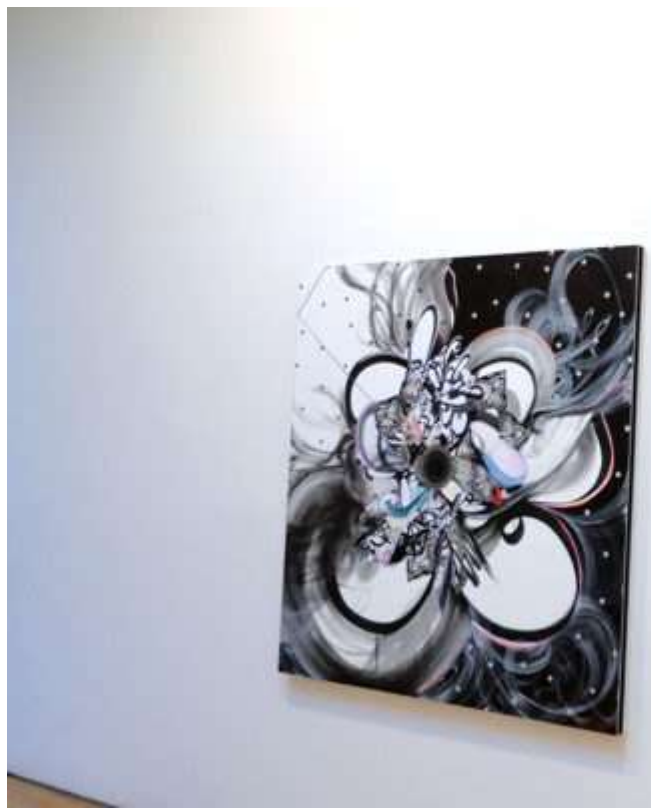














# Esther Mahlangu

Esther Mahllangu is a South African artist, whose works take direct inspiration from patterns and palettes of Ndebele house painting and beadwork. Her works are colorful, abstract and geometric compositions. She has collaborated with many brands and received a lot of international attention. However, Esther Mahlangu still lives and works in her village, having set up an Art School in her backyard, sharing and passing on traditional practices.

- <https://www.youtube.com/watch?v=UOVMayux4ZY> (4 mins)
- <https://www.youtube.com/watch?v=ugAfN4V7pIM> (2 mins)



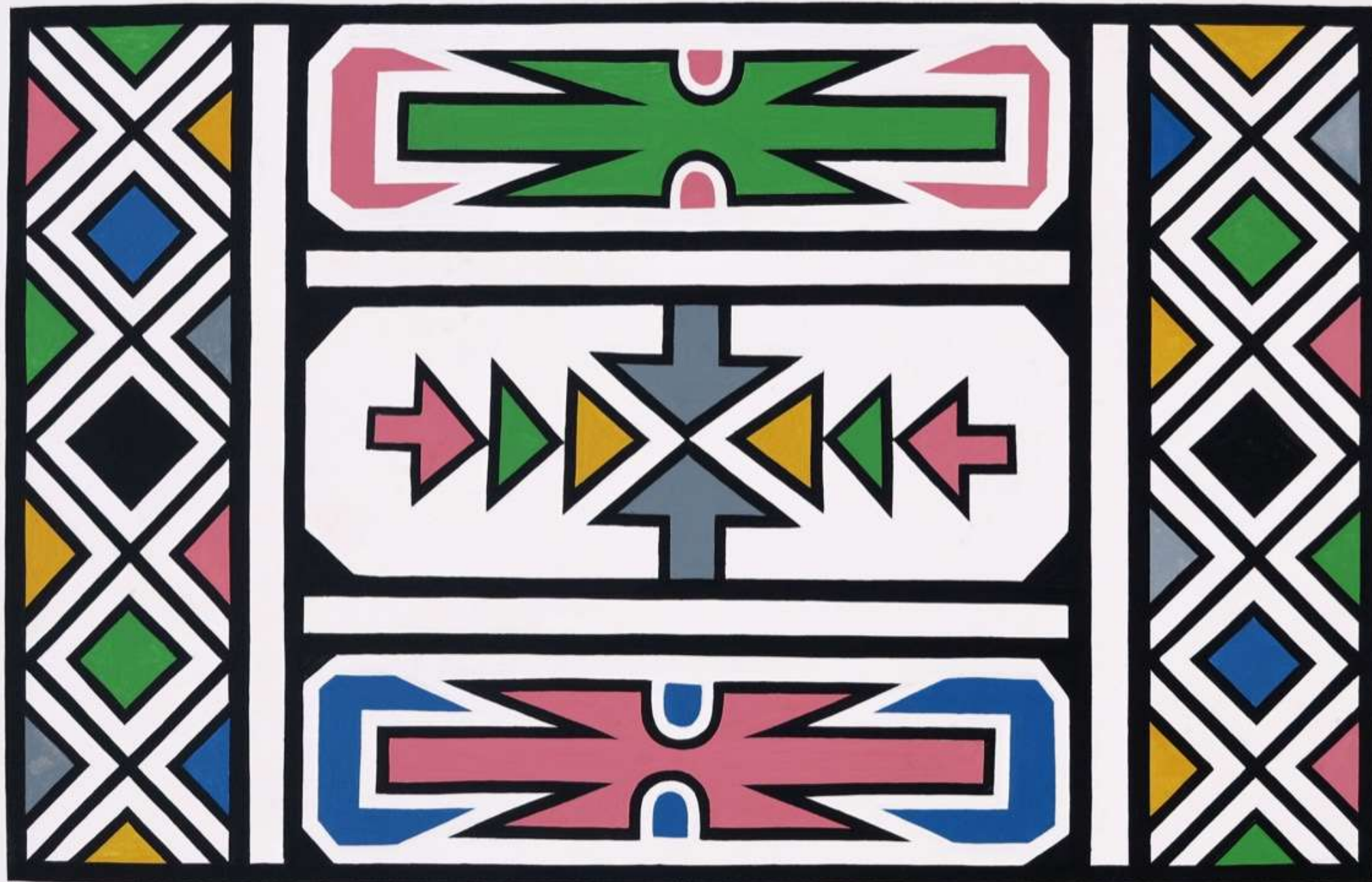






ESTHER Mahlangu 2018















# Odili Donald Odita

Odili Donald Odita is a Nigerian American abstract painter who lives and works in Philadelphia, Pennsylvania. His work explores color both in the figurative historical context and in the sociopolitical sense.

Fractured space comes to mind whenever I see a painting by Odili Donald Odita. This Nigerian-born abstract painter, who emigrated with his family to Columbus, Ohio, as a child, has a masterful ability to position colors and shapes in conflict with each other on a flattened plane. The resulting relationships open up unsettling visual worlds of vibration and movement. Pulsating between the chaotic and the sublime, his paintings extend the long-sought legacy of dynamism that has concerned abstract artists at least since the days of Pointillism.

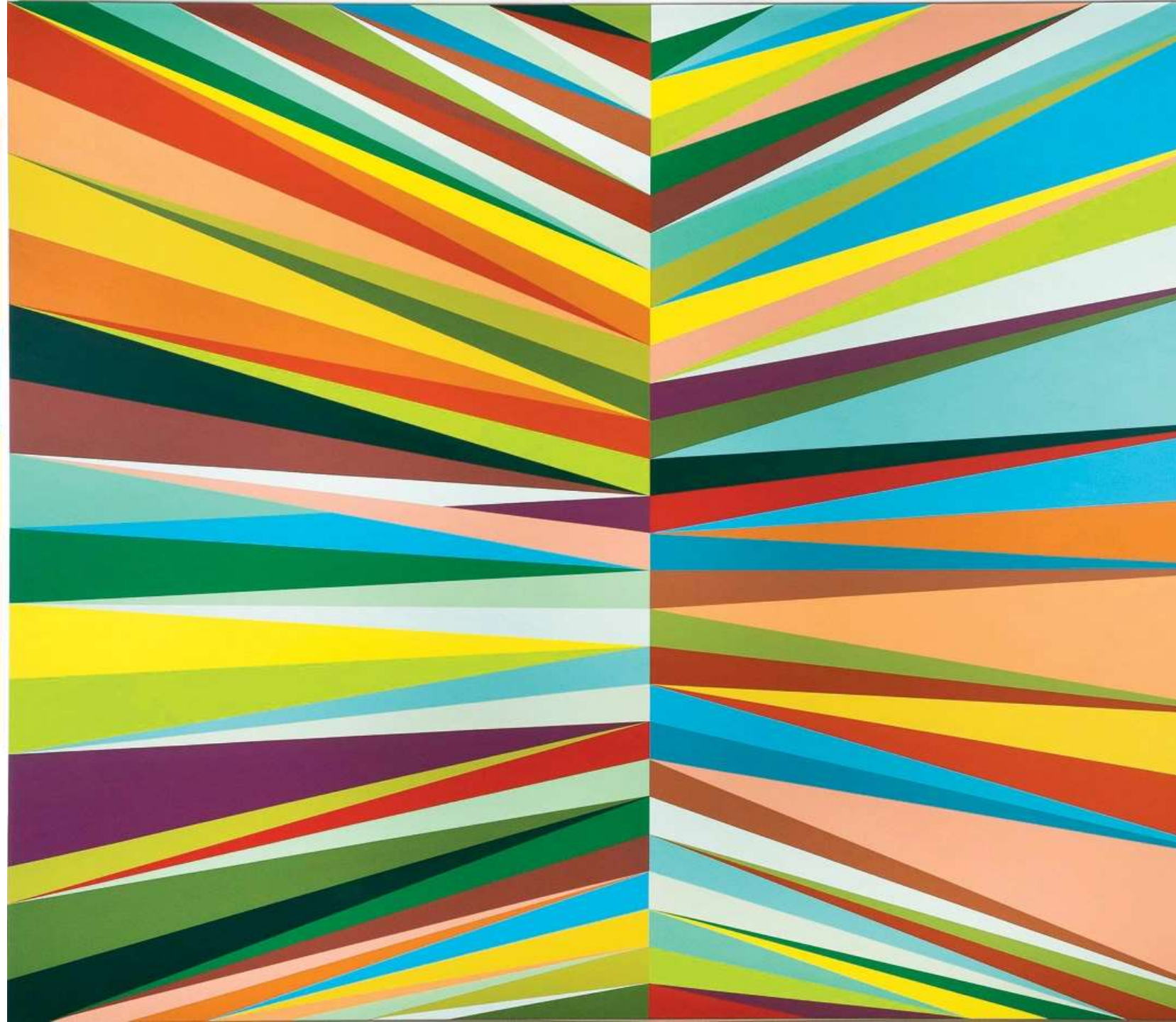
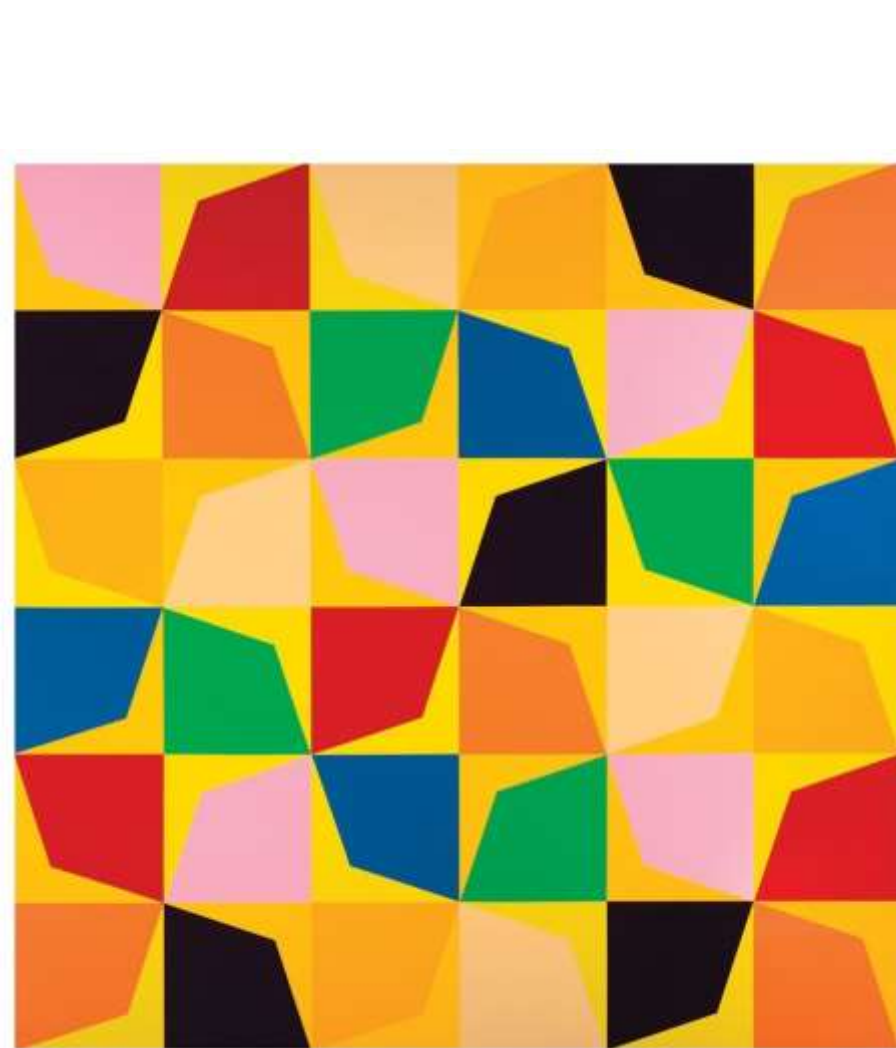
<https://www.youtube.com/watch?v=n7TDTztRbcU>











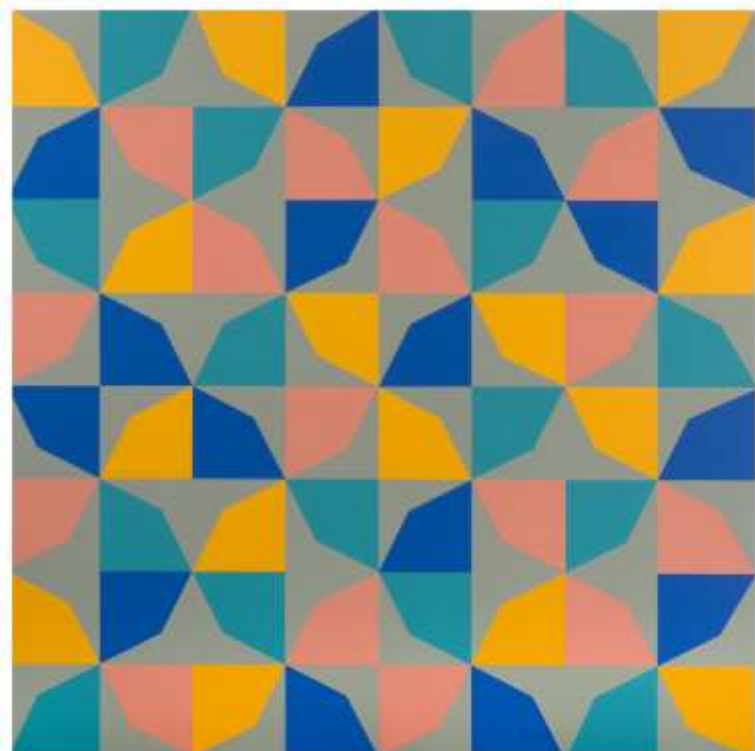














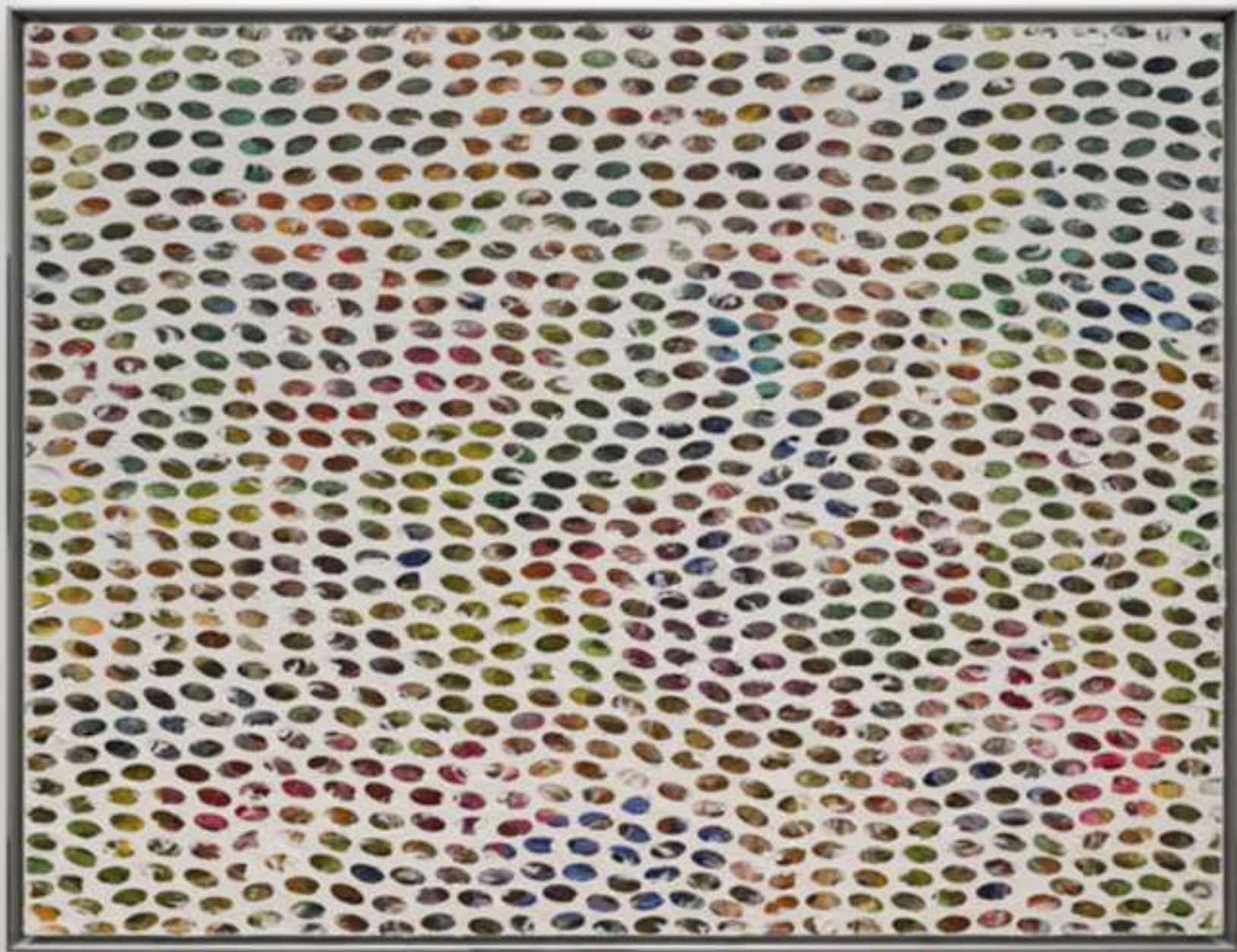
# James Little

James Little is an American painter and curator. He is known for his works of geometric abstraction which are often imbued with exuberant color. He has been based in New York City.

- <https://www.facebook.com/watch/?v=1581836821996691>



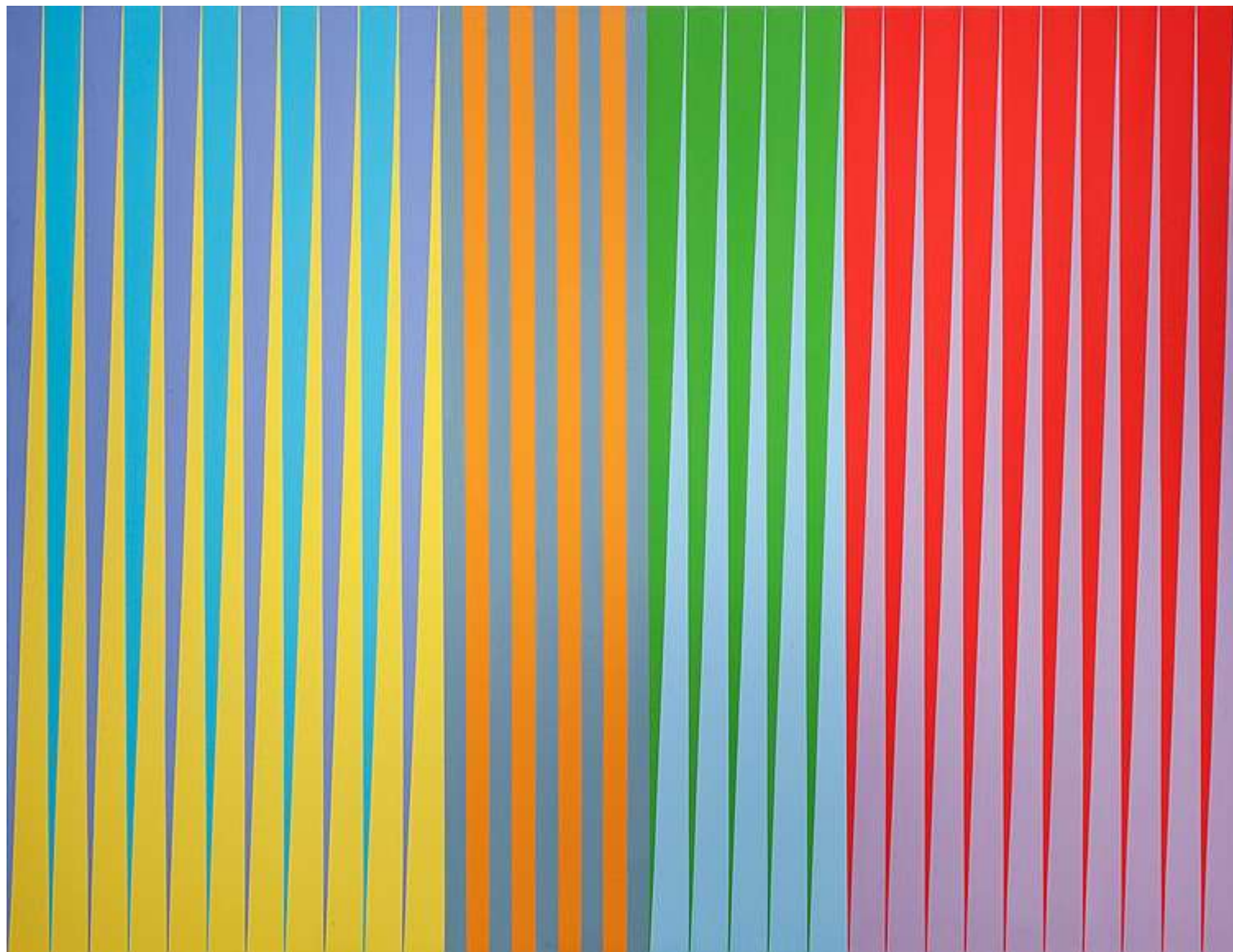






















# Assignment Suggestions...

- Create a work inspired by the spaces between leaves or buildings
- Create an abstract work defined by the use of color and shape
- Paint with a feather