

# The Color Purple

From Snail Mucus to Monarchy

# The History of Purple

Purple is a color intermediate between blue and red. It is similar to violet, but unlike violet, which is a spectral color with its own wavelength on the visible spectrum of light, purple is a composite color made by combining red and blue. According to surveys in Europe and the U.S., purple is the color most often associated with royalty, magic, mystery, and piety. When combined with pink, it is associated with eroticism, femininity, and seduction.

Purple was the color worn by Roman magistrates; it became the imperial color worn by the rulers of the Byzantine Empire and the Holy Roman Empire, and later by Roman Catholic bishops. Similarly in Japan, the color is traditionally associated with the Emperor and aristocracy. The complementary color of purple is yellow.

- <https://www.youtube.com/watch?v=EYoOqwWHHRo>
- <https://symbolreader.net/2015/04/04/color-symbolism-purple/>
- <https://www.youtube.com/watch?v=7OiG-WjbCQA> (natural dyes)

# Tyrian Purple

- <https://www.youtube.com/watch?v=dUw8rJY3mCk>
- <https://www.youtube.com/watch?v=ZLCO11LF4i8>
- [https://www.youtube.com/watch?v=QRLL6\\_CnU4I](https://www.youtube.com/watch?v=QRLL6_CnU4I) (7 mins—use this)
- Mixing purple
- <https://www.youtube.com/watch?v=SoiWNkrILeQ>
- <https://www.youtube.com/watch?v=NarYRNnzswM> (good)
- <https://www.youtube.com/watch?v=REMPiP5Fgmc> (medieval)





<https://www.youtube.com/watch?v=XNx3a6h70h0>









<https://smarthistory.org/san-vitale/>









***Hercules's Dog Discovers Purple Dye*** or ***The Discovery of Purple by Hercules's Dog*** is an oil painting by [Flemish](#) artist [Peter Paul Rubens](#) painted circa 1636, towards the end of his career. It depicts the mythical discovery of [Tyrian purple](#) by [Hercules](#) and his dog, and was one of dozens of oil on panel sketches made by Rubens for the decoration of the [Torre de la Parada](#) in [Spain](#). A completed painting based on Rubens's sketch was made by [Theodoor van Thulden](#) in 1636-8, and is now held by the [Prado Museum](#)





<https://www.youtube.com/watch?v=3OI-hXF-LHA>

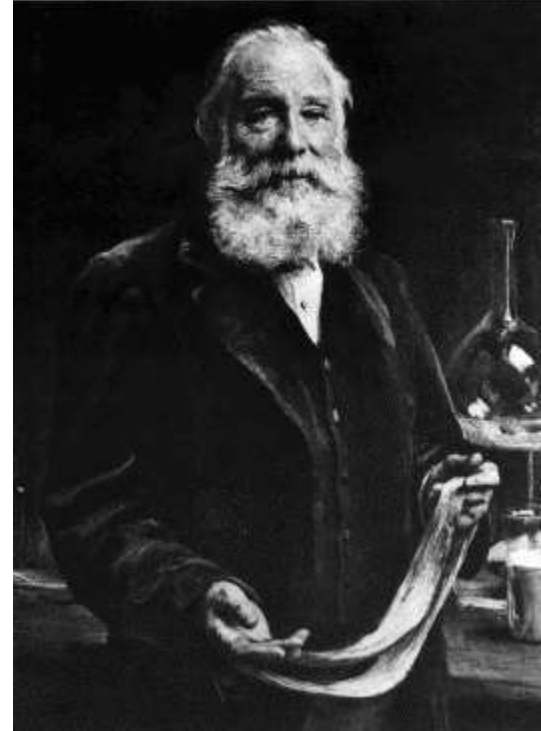




# William Henry Perkin and the Invention of Mauveine

Mauveine, also known as aniline purple and Perkin's mauve, was one of the first synthetic dyes. It was discovered serendipitously by William Henry Perkin in 1856 while he was attempting to synthesise the phytochemical quinine for the treatment of malaria.

- <https://www.bbvaopenmind.com/en/science/research/mauve-the-history-of-the-colour-that-revolutionized-the-world/>
- <https://www.youtube.com/watch?v=g7JCMxq7DU8&t=15s> (use this)





# Perkin's "Mauve."

---

DYED WITH COLOUR MADE IN 1863-4.





# Victorian Era

**Purple was one of the most fashionable—and versatile—colors of the Victorian era.** In fabric shades ranging from pale, delicate lilac to rich, deep plum, it was suitable for day dresses, visiting dresses, riding habits, and evening gowns.











# John Roddam Spencer Stanhope (1829-1908)

John Roddam Spencer Stanhope was an English artist associated with Edward Burne-Jones and George Frederic Watts and often regarded as a second-wave pre-Raphaelite. His work is also studied within the context of Aestheticism and British Symbolism.

<https://smarthistory.org/john-roddam-spencer-stanhope-thoughts-of-the-past/>







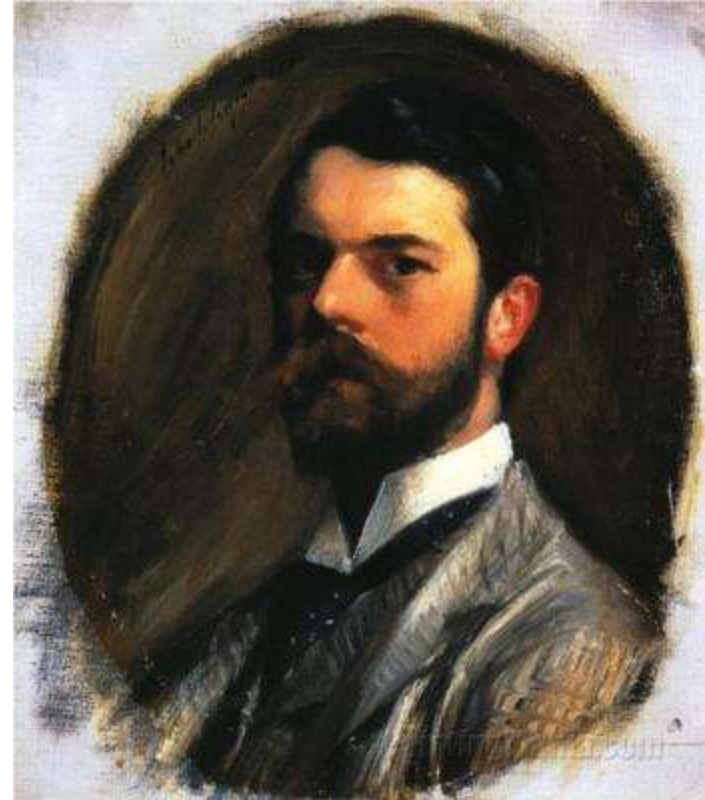


# John Singer Sargent (1856-1925)

John Singer Sargent was an American expatriate artist, considered the "leading portrait painter of his generation" for his evocations of Edwardian-era luxury. He created roughly 900 oil paintings and more than 2,000 watercolors, as well as countless sketches and charcoal drawings.

Violet Sargent was his sister and the subject of many of his paintings.

- <https://www.youtube.com/watch?v=irfq3CCctKU>





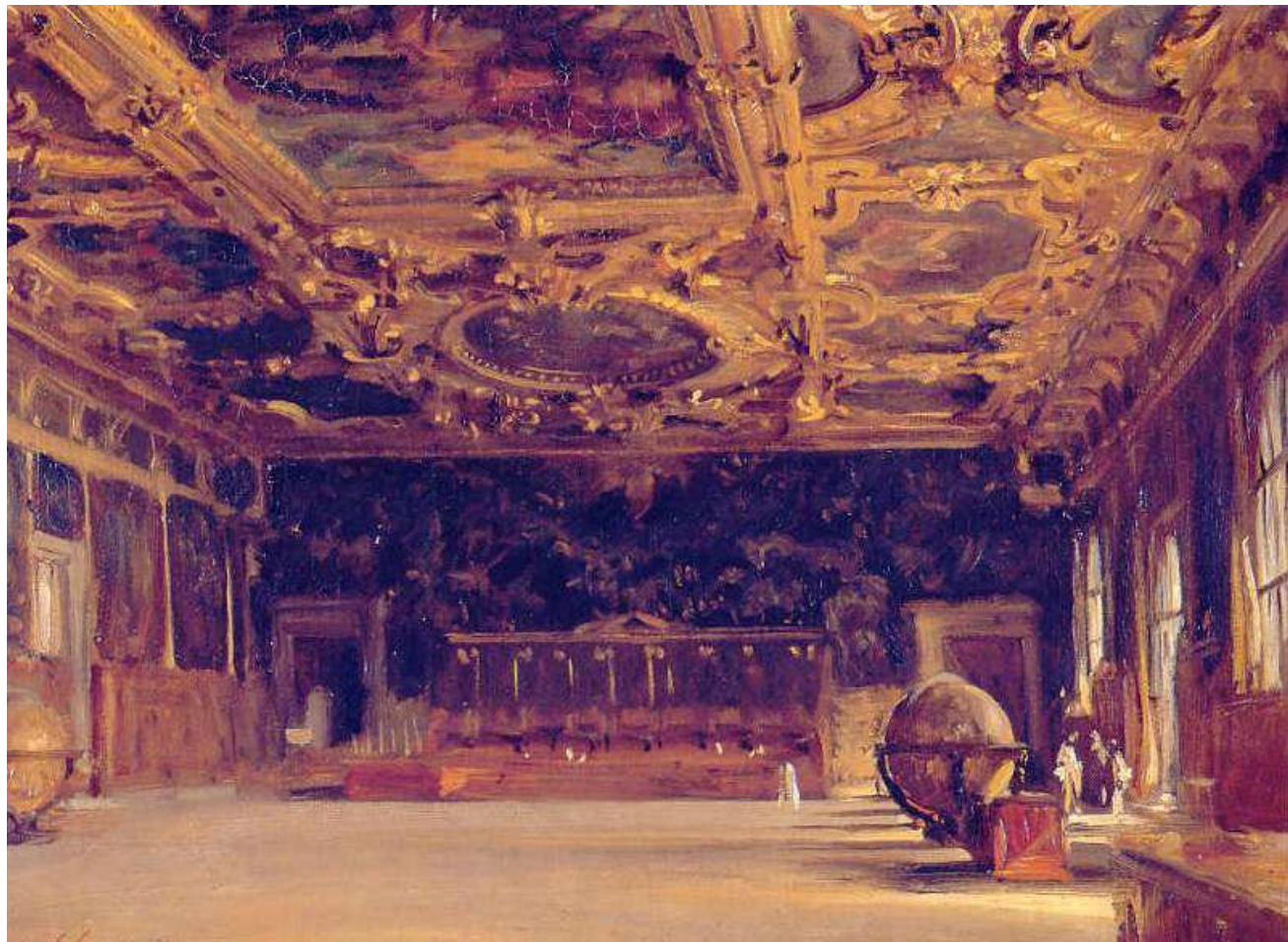


















# Arthur Hughes (1832-1915)

Arthur Hughes was an English painter and illustrator associated with the Pre-Raphaelite Brotherhood.







# Pierre Bonnard (1867-1947)

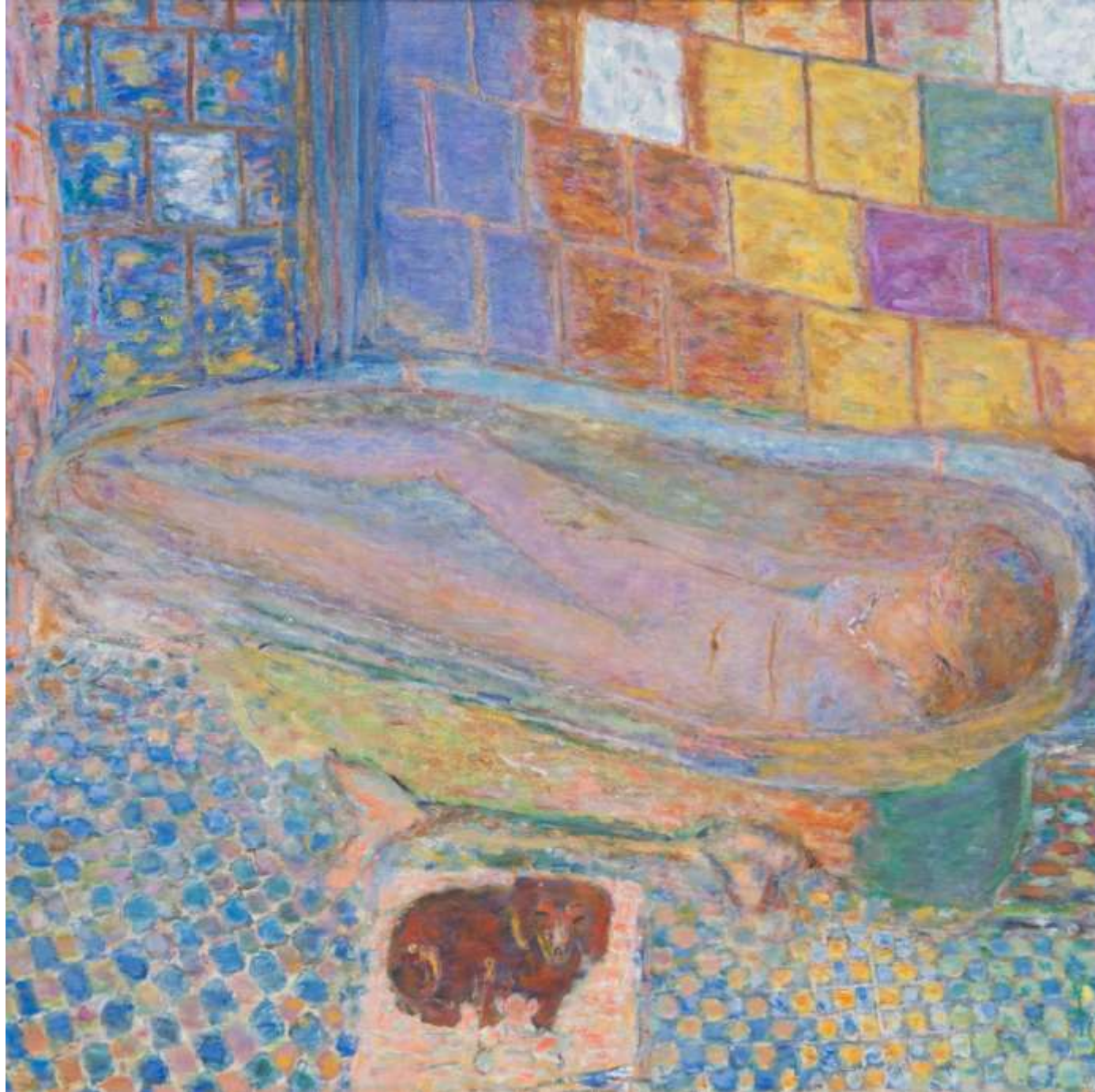
Pierre Bonnard was a French painter, illustrator and printmaker, known especially for the stylized decorative qualities of his paintings and his bold use of color.

<https://www.youtube.com/watch?v=w3adUn9kcjo>

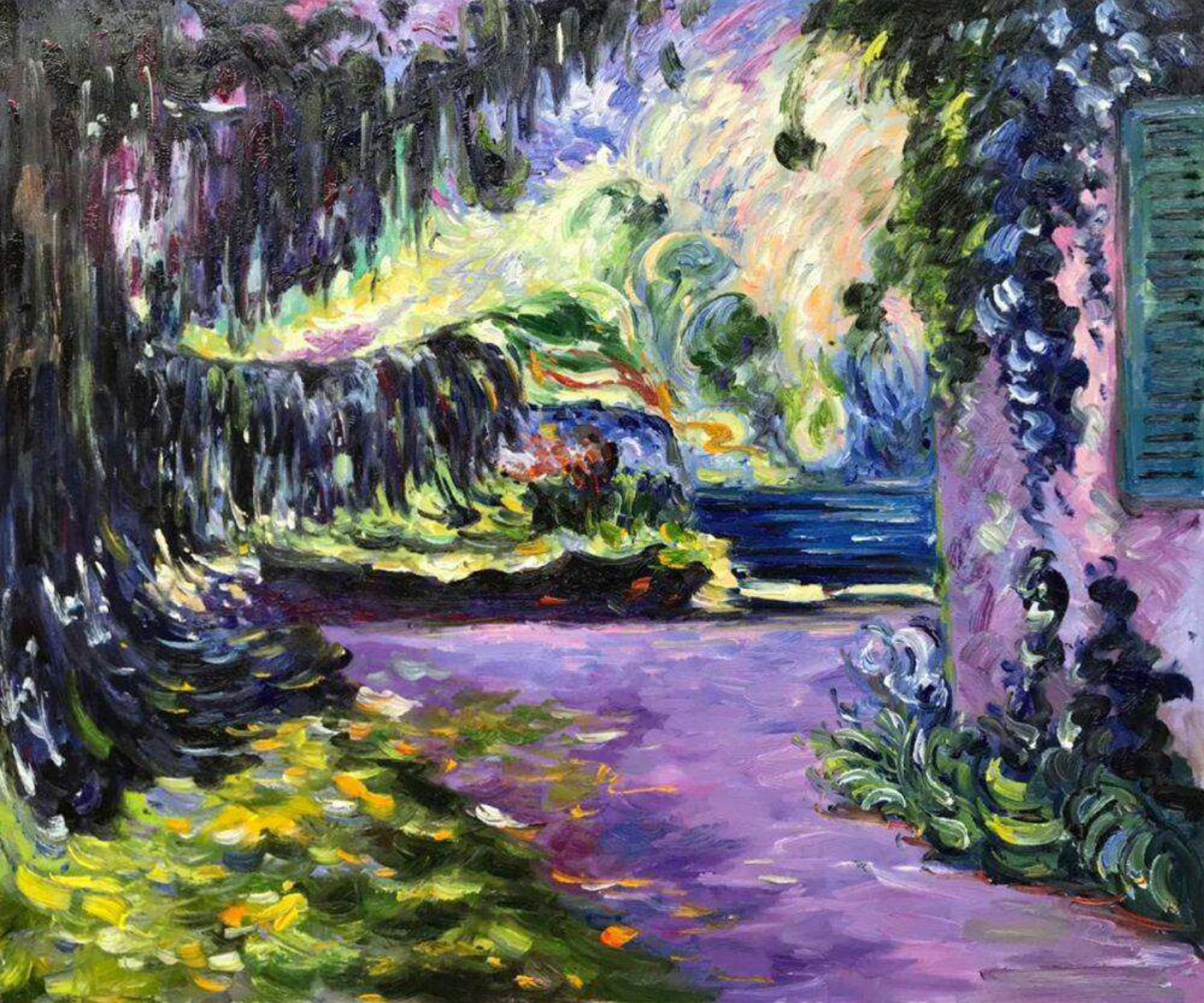
<https://www.youtube.com/watch?v=xfg1JCj6Xyo>

<https://www.youtube.com/watch?v=V1Xdx4G1Jec>









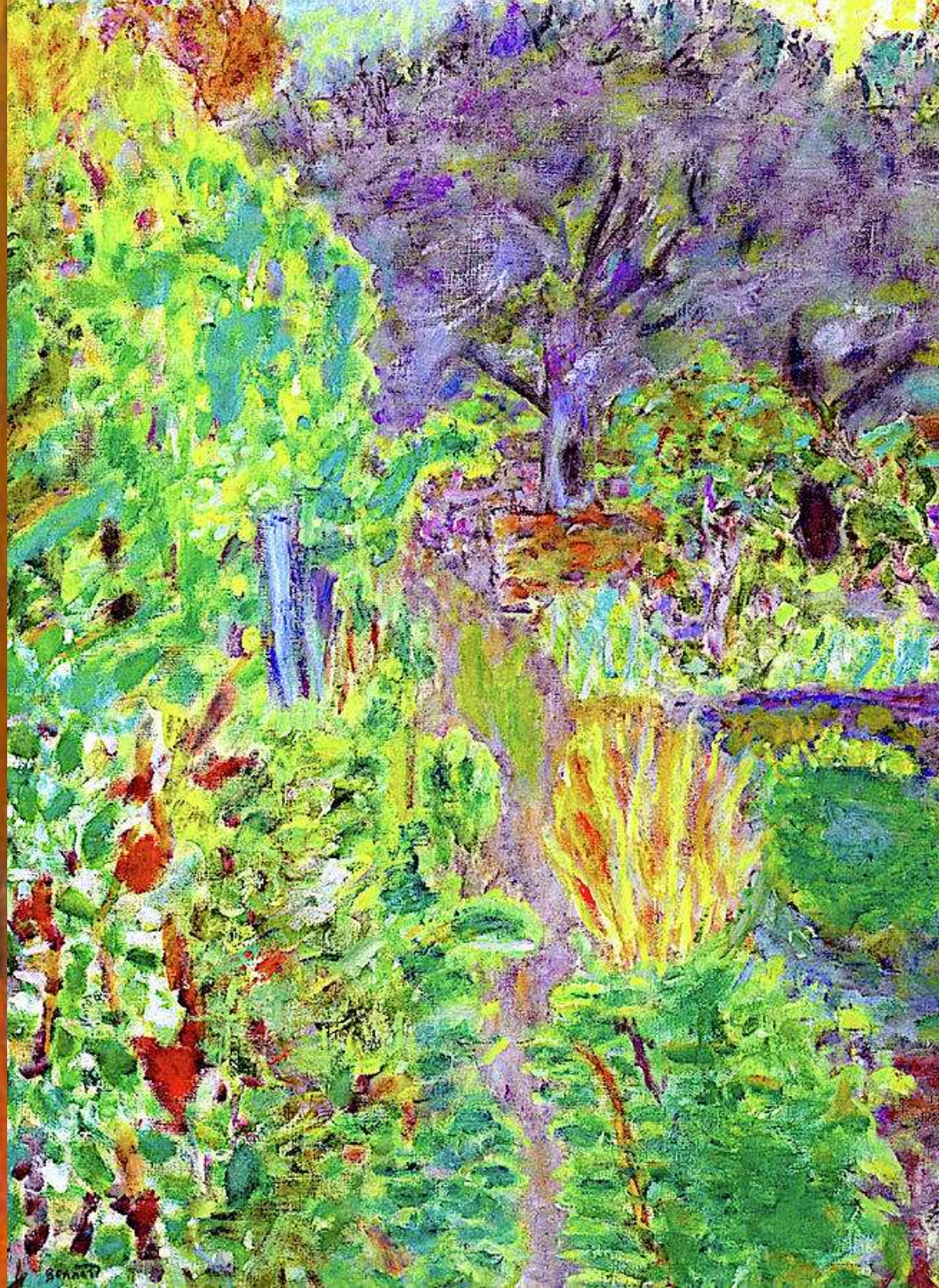




















J. Verilland

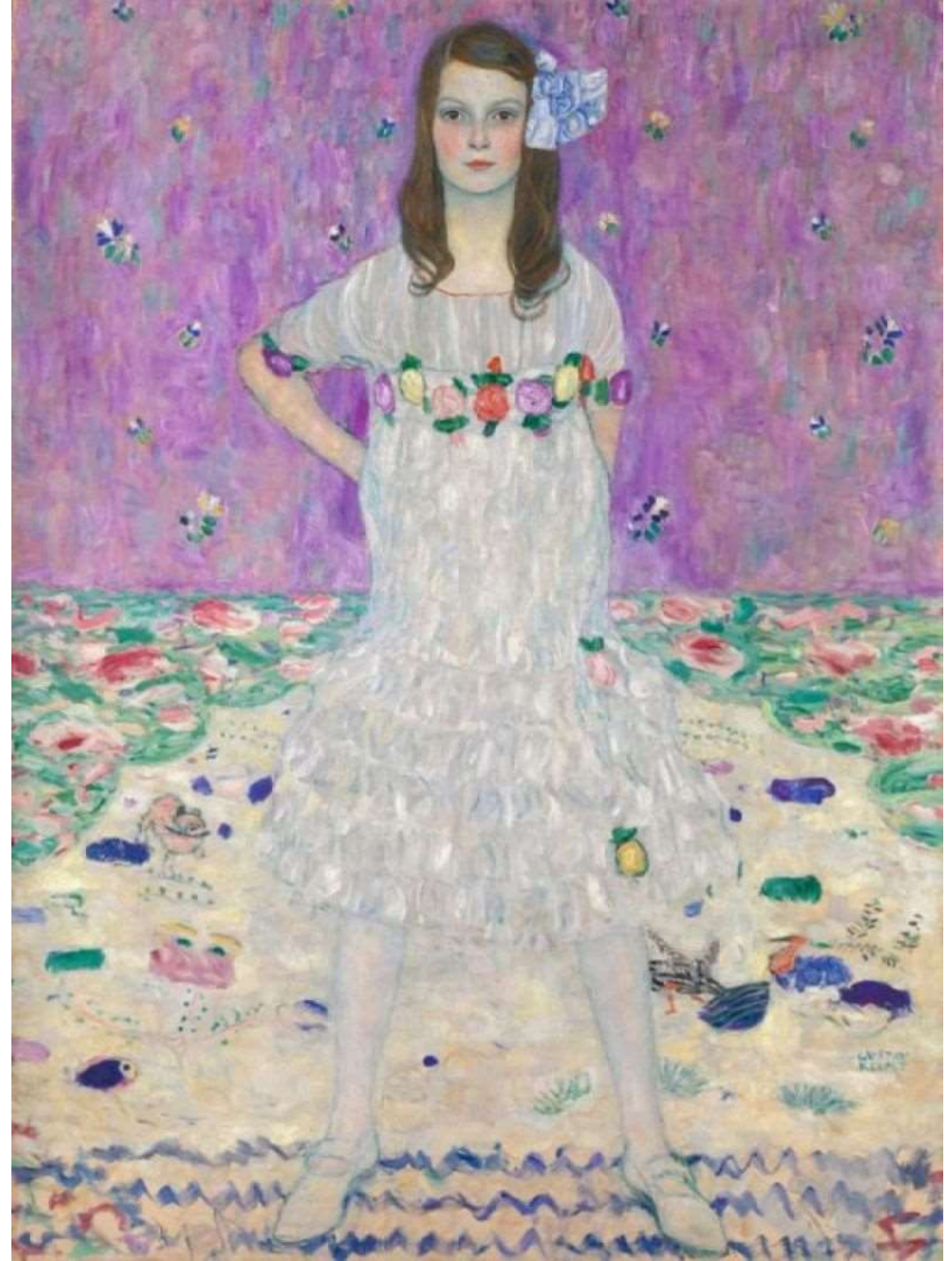




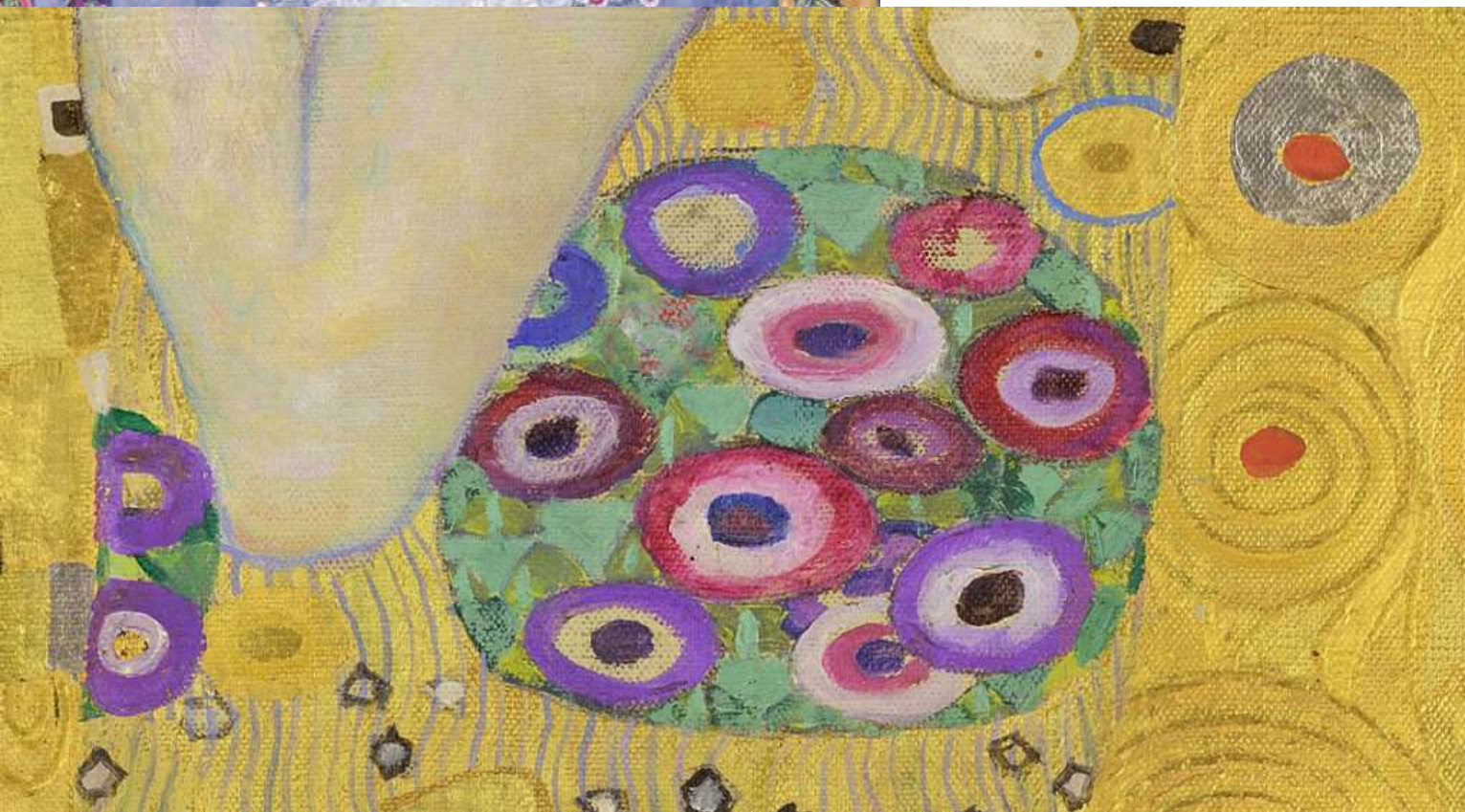
# Gustav Klimt

- <https://blog.google/outreach-initiatives/arts-culture/how-machine-learning-revived-long-lost-masterpieces-klimt/>
- <https://www.handmadepiece.com/support/art-introduction-analysis/how-many-times-did-adele-bloch-bauer-pose-for-klimt-as-a-model.html>

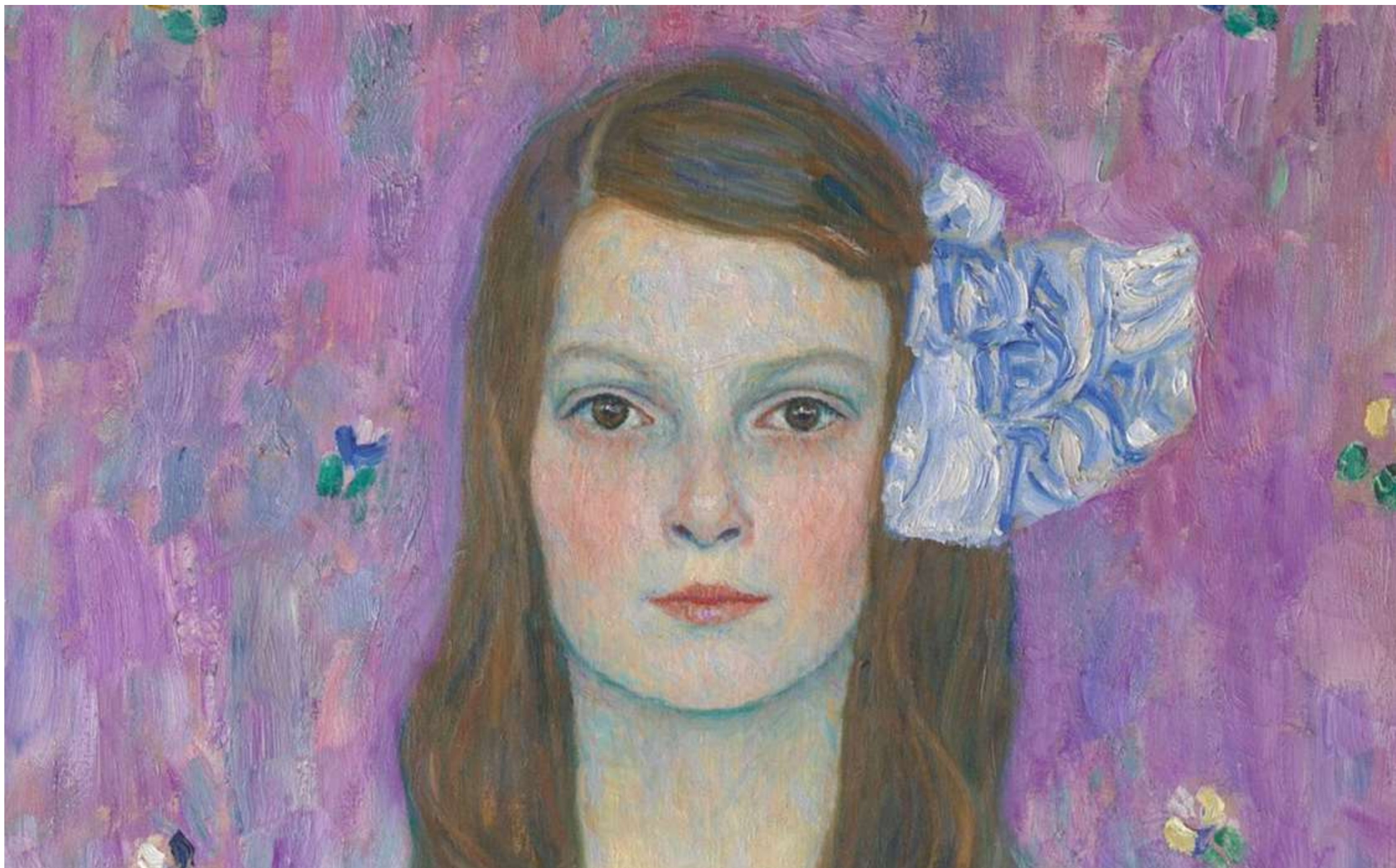














# Monet

- [https://www.youtube.com/watch?v=NFPs\\_cRRGdM](https://www.youtube.com/watch?v=NFPs_cRRGdM)







Claude Monet 1903









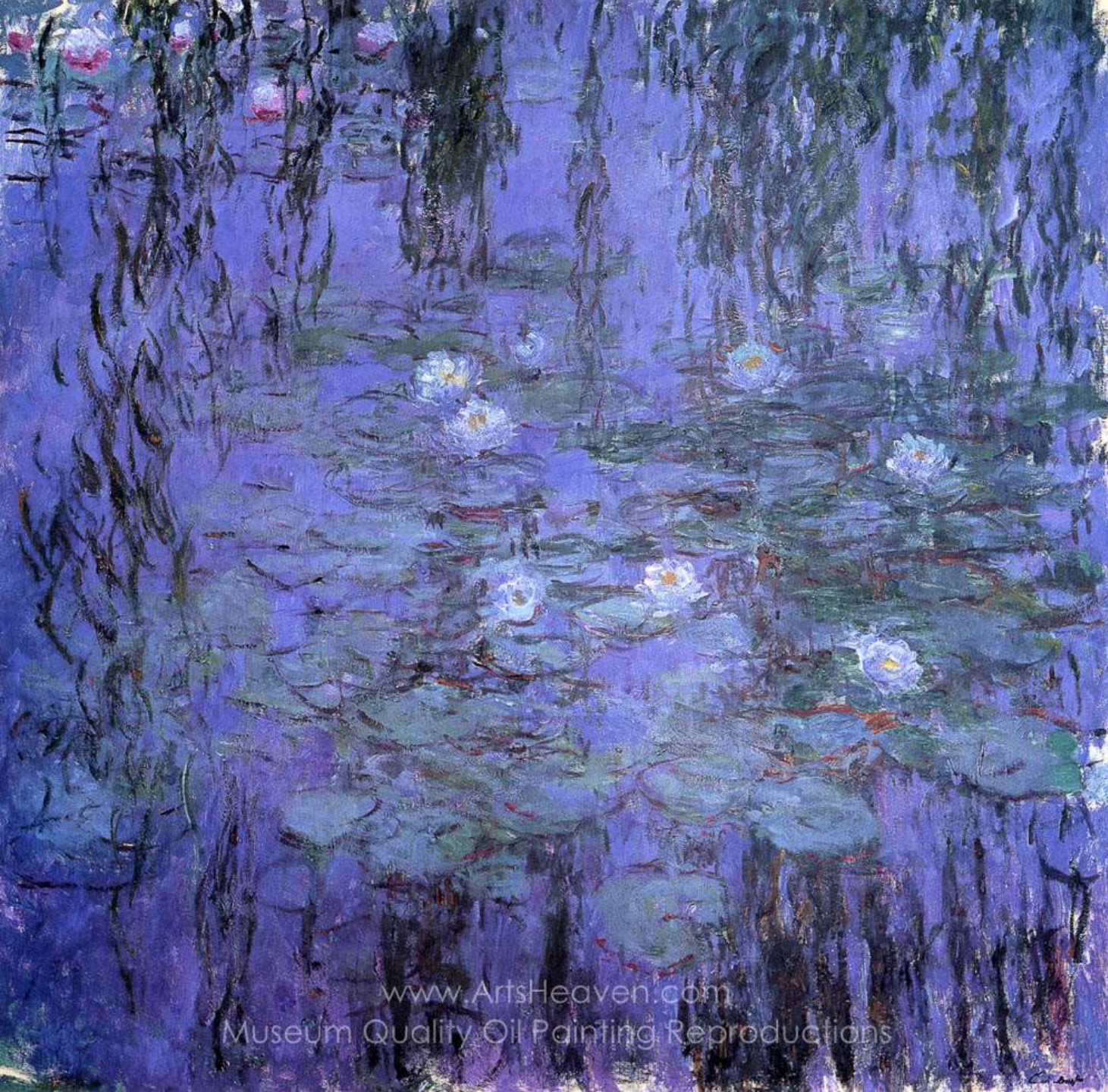




Store No.111744

Claude Monet 1903





[www.ArtsHeaven.com](http://www.ArtsHeaven.com)  
Museum Quality Oil Painting Reproductions



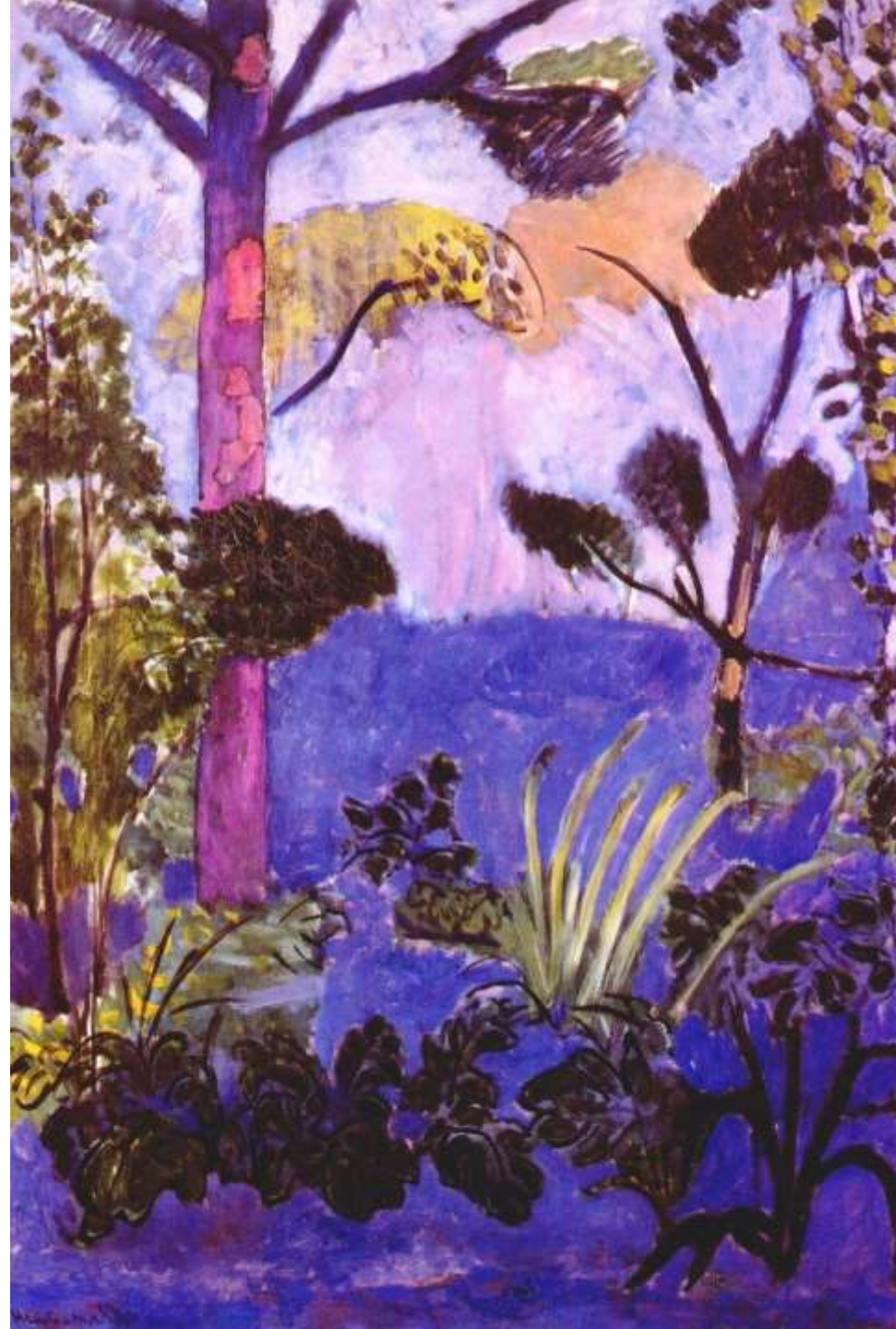
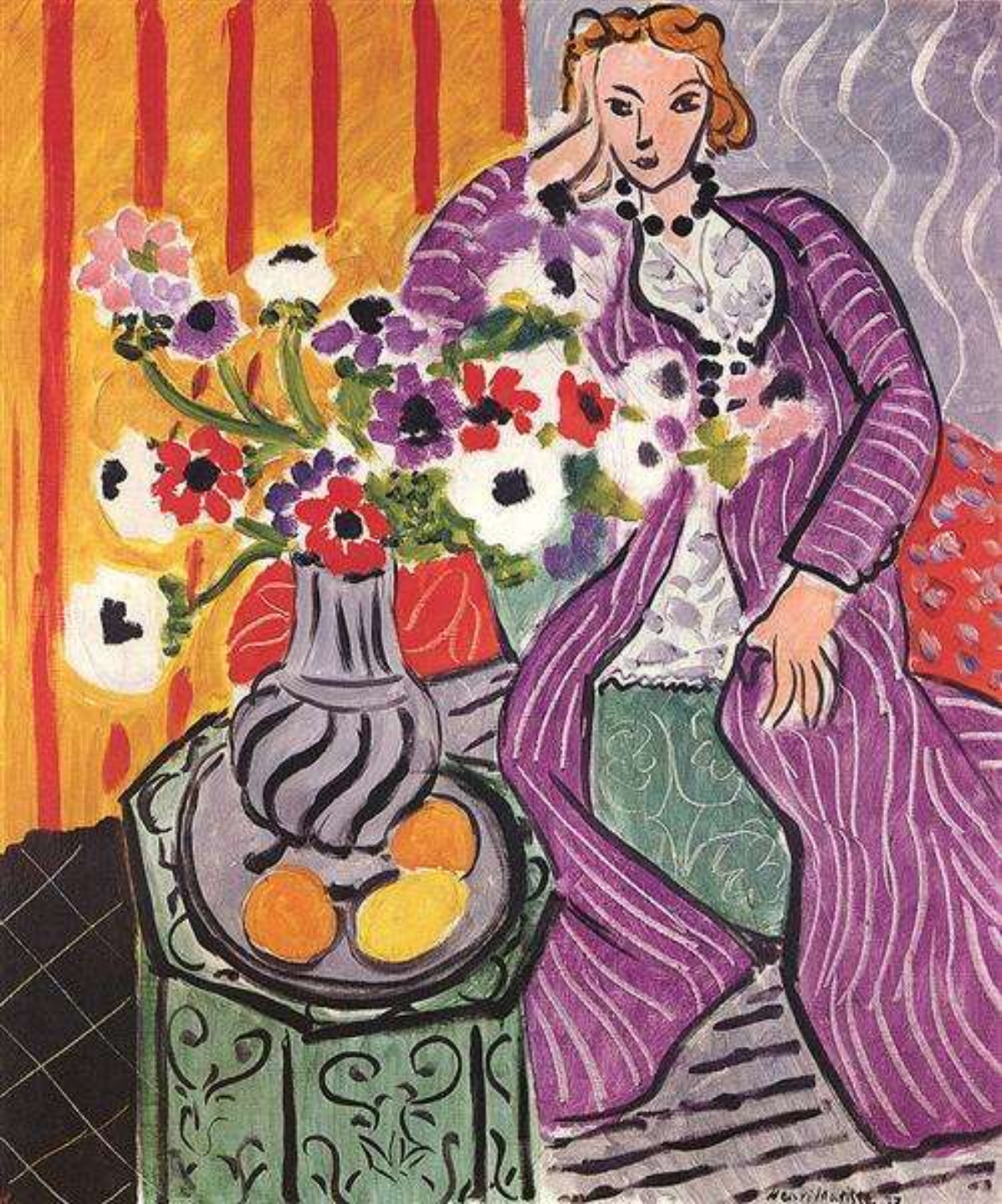


# Henri Matisse

## Woman in a Purple Robe

- <https://www.youtube.com/watch?v=iSjiAEsB33w>







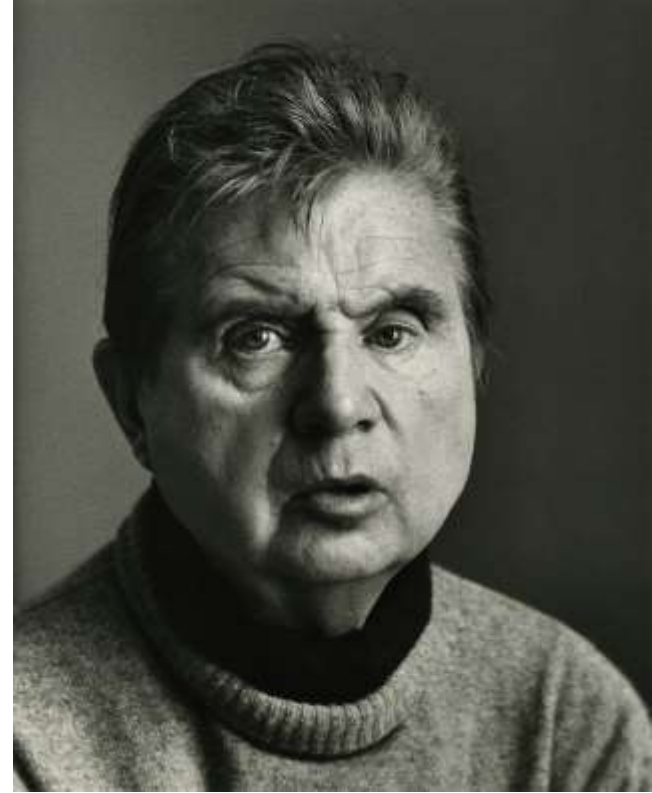




# Francis Bacon

Francis Bacon was an Irish-born British figurative painter known for his raw, unsettling imagery. Focusing on the human form, his subjects included crucifixions, portraits of popes, self-portraits, and portraits of close friends, with abstracted figures sometimes isolated in geometrical structures.

- <https://www.youtube.com/watch?v=2fAlFVYUuKo>









# Georgia O'Keeffe (1887-1986)

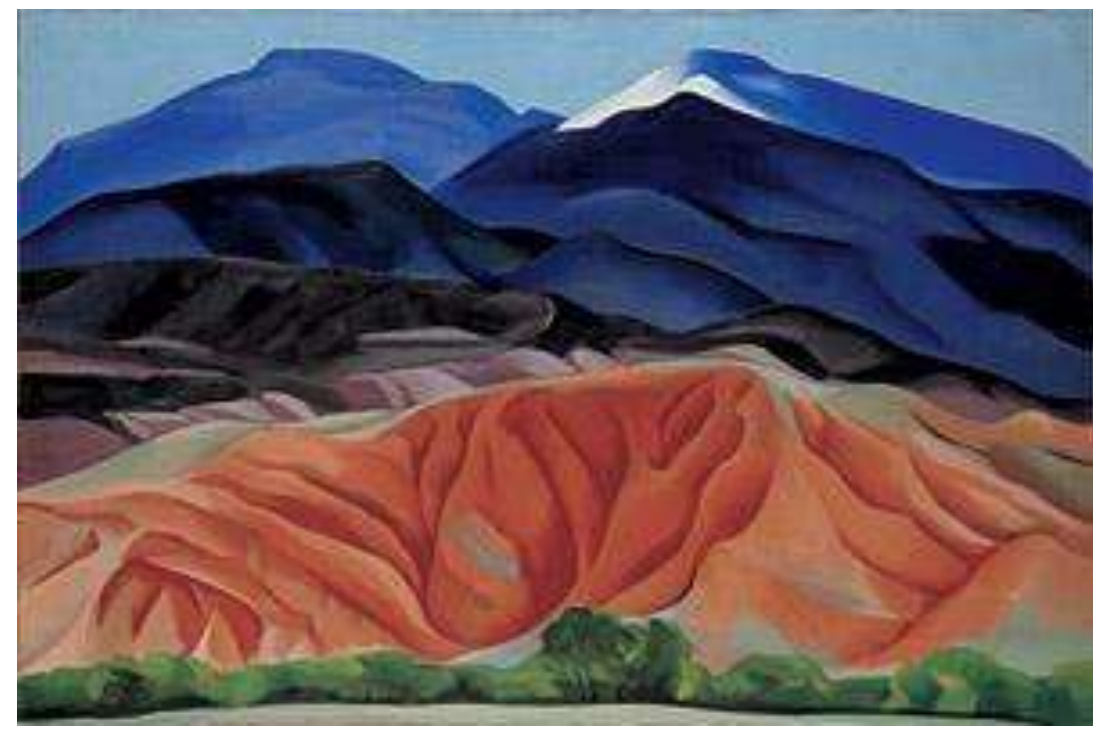
Born in 1887, Georgia O'Keeffe was an American artist who painted nature in a way that showed how it made her feel. She is best known for her paintings of flowers and desert landscapes.

She played an important part in the development of modern art in America, becoming the first female painter to gain respect in New York's art world in the 1920s. Her unique and new way of painting nature, simplifying its shapes and forms meant that she was called a pioneer.

<https://www.youtube.com/watch?v=k8XNhr-09Ng>











GEORGIA O'KEEFFE  
BLACK AND PURPLE PETUNIAS

